

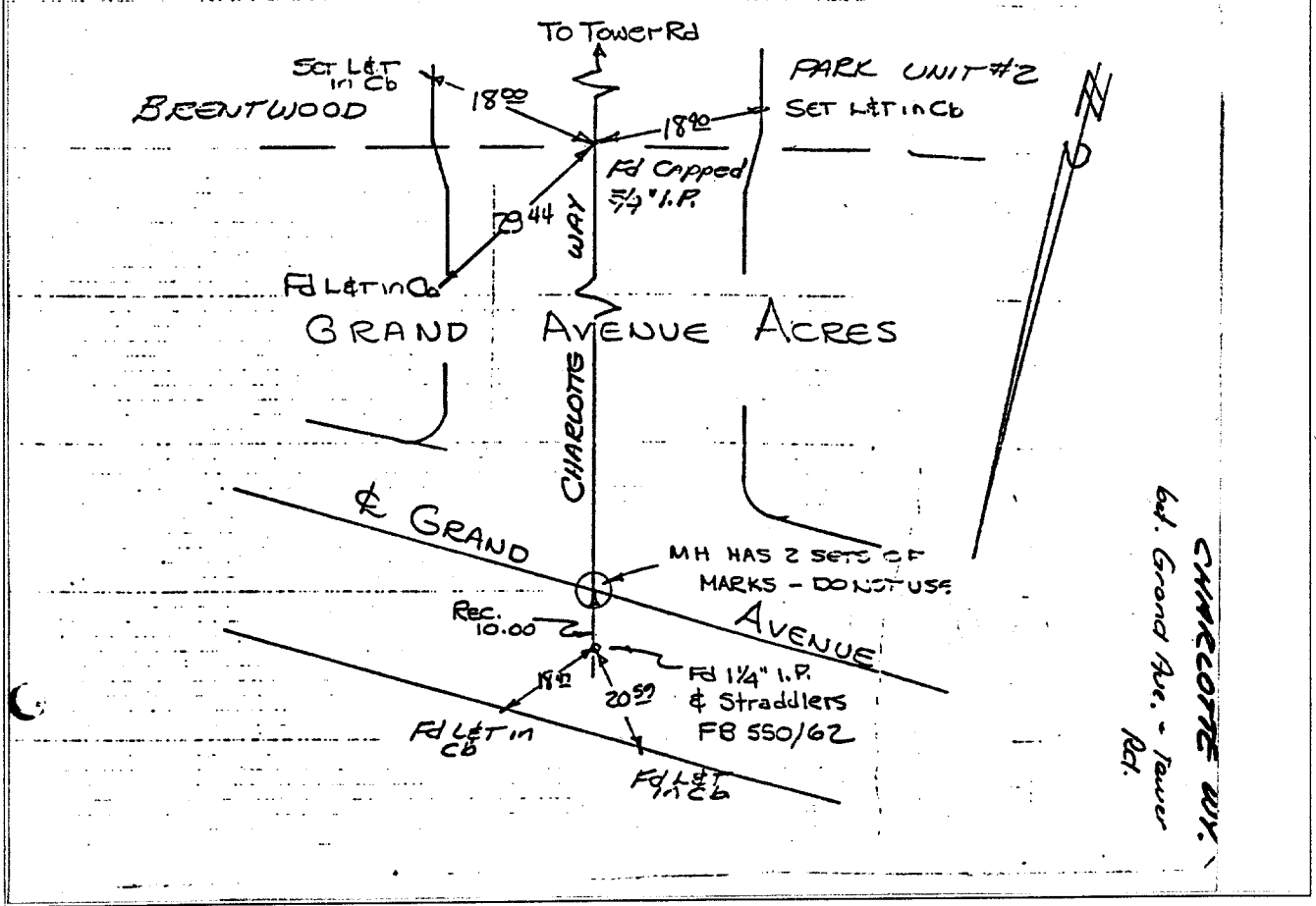
1311. TIF

SWING TIES

CHARLOTTE WAY
Det
GRAND Ave / Tower Rd.

HISTORICAL DATA
1. FB 550/62

Crew
HUTCHINSON
THORP
FRYC
JAN 9. 1969



Street: CHARLOTTE WY
X-Street: GRAND & TOWER
OFFICIAL USE ONLY

- × FD. Ramset Nail on T/C
- FD. LD. & TK. on T/C
- FD. "C" Nail on T/C
- Set LD. & TK. on T/C

Scale:
Date:
Drawn by:
W.O.:
F.B.:

OFFICIAL TIE PLAT

CITY OF RIVERSIDE

These ties are for the purpose of perpetuating the found monumentation. No claim is made as to the relationship of the points or lines shown hereon to true boundary locations.

Sheet 1 of 1
File No.: