

13127.TIF

Street: ALESSANDRO BLVD.

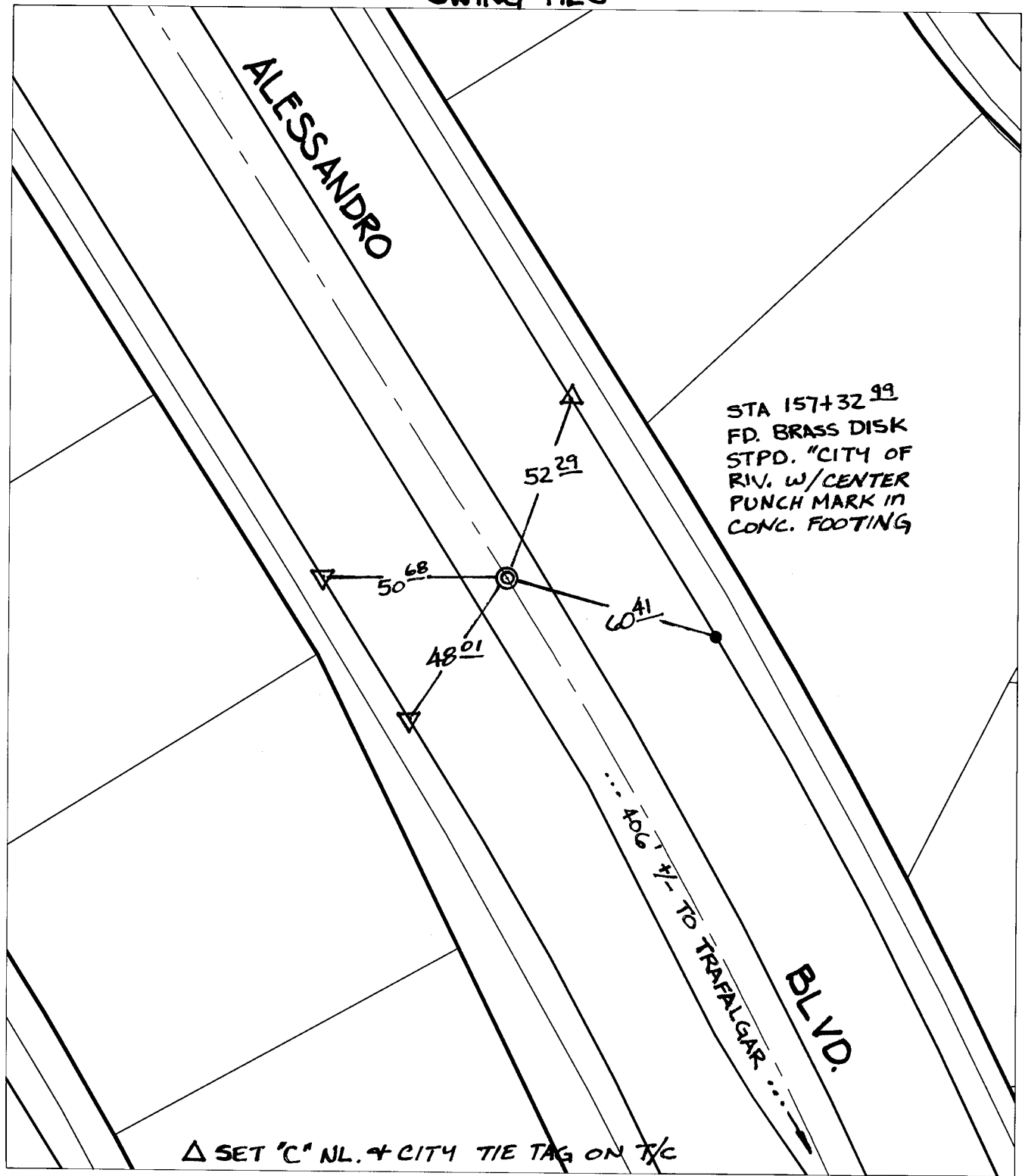
OFFICIAL USE ONLY

X-Street EC 406' +/- TO TRAFALGAR

SWING TIES

ALESSANDRO

STA 157+32.99
FD. BRASS DISK
STPD. "CITY OF
RIV. W/CENTER
PUNCH MARK IN
CONC. FOOTING



△ SET "C" NL. & CITY TIE TAG ON T/C

- ✕ FD. Ramset Nail on T/C ● FD. LD. & TK. on T/C P.K. and City Engineer tag to be set @ surface after street construction is complete. (If possible)
- FD. "C" Nail on T/C ○ Set LD. & TK. on T/C

Scale: 1" = 40'

Date: 02/09/07

Drawn by: pw

F.B.:

TR-Sec: T3SR5W-1

OFFICIAL TIE PLAT

CITY OF RIVERSIDE

These ties are for the purpose of perpetuating the found monumentation. No claim is made as to the relationship of the points or lines shown hereon to true boundary locations.



Sheet 1 of 1

Cadme MB: 55-6