

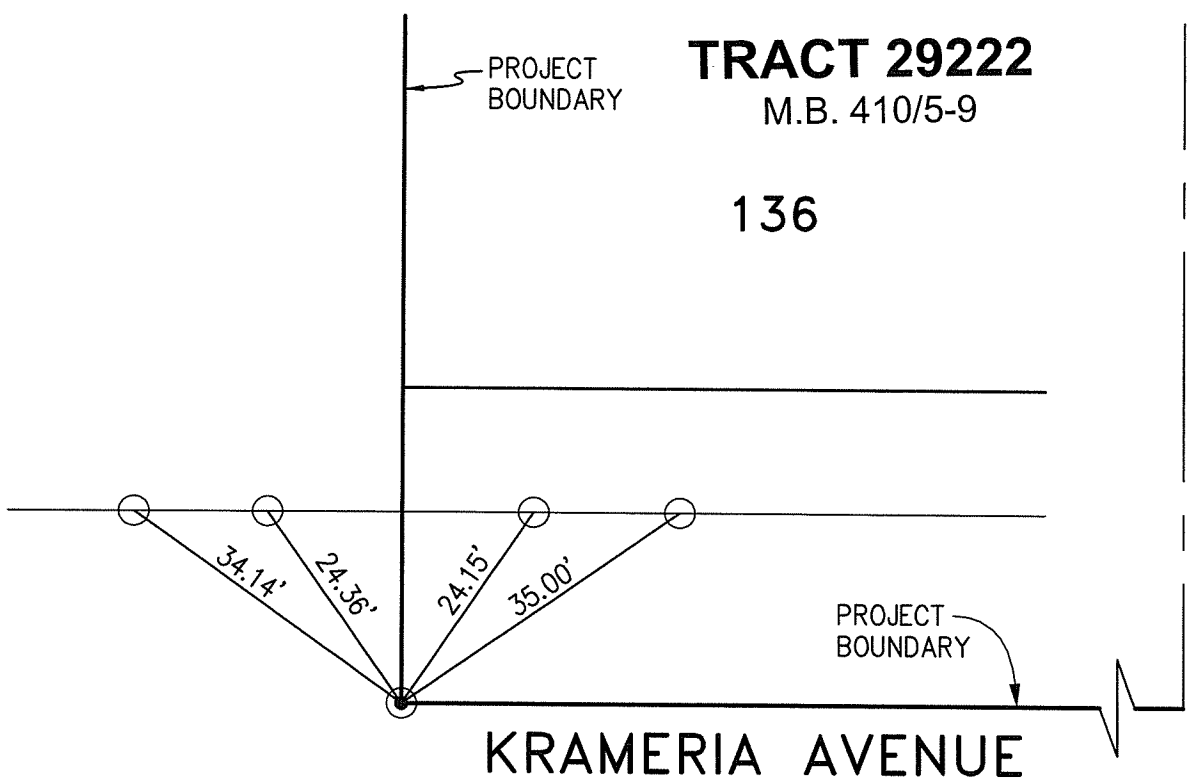
13240.77E

STREET: KRAMERIA AVENUE
OFFICIAL USE ONLY
X-STREET: GOLDEN LANTERN ROAD

GOLDEN LANTERN ROAD

TRACT 29222
M.B. 410/5-9

136



- INDICATES SPIKE AND WASHER
R.C.E. 31574, SET FLUSH,
UNLESS OTHERWISE NOTED.
- INDICATES LEAD & TACK
IN TOP OF CURB
- INDICATES LEAD, TACK & TAG
R.C.E. 31574 IN TOP OF CURB

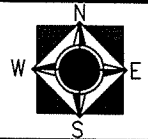
CSL Engineering, Inc.
11651 Sterling Avenue, Suite 'E'
Riverside, Ca 92503
(951) 785-5122



SCALE: 1"=20'
DATE: 04-09-09
DRAWN BY: SLL
F.B.:
SEC: 30 T.3S.,R.4W

OFFICIAL TIE PLAT
CITY OF RIVERSIDE

THESE TIES ARE FOR THE PURPOSE OF PERPETUATING THE FOUND
MONUMENTATION. NO CLAIM IS MADE AS THE RELATIONSHIP OF THE
POINTS OR LINES SHOWN HEREON TO TRUE BOUNDARY LOCATIONS



SHEET 1 OF 1