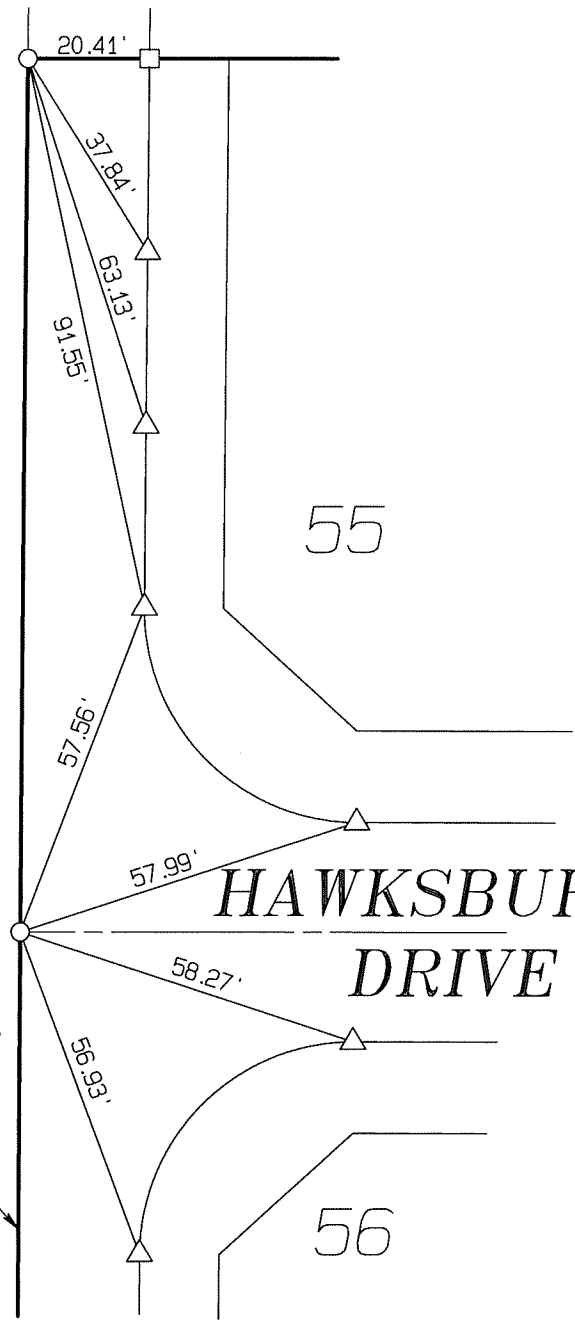


13396.TIF



C/L DAUCHY AVENUE



HAWKSBURY DRIVE

- INDICATES SET GEAR SPIKE & WASHER STAMPED LS 5529, FLUSH
- △ INDICATES SET RAMSET NAIL IN CURB
- INDICATES SET RAMSET NAIL & TAG STAMPED LS 5529 IN CURB

ALBERT A.
WEBB
 ASSOCIATES

CIVIL ENGINEERS
 3788 McCRAY ST.
 RIVERSIDE CA. 92506
 (951) 686-1070



| | |
|----------|------------|
| SCALE: | NTS |
| DATE: | 05-18-2006 |
| CHK. BY: | <i>mj.</i> |
| DR. BY: | <i>Jer</i> |
| W.D.: | 04-097 |
| F.B.: | 2002 |

OFFICIAL TIE PLAT
 CITY OF RIVERSIDE
 TRACT 31238

| | |
|-----------|----------------|
| SHEET | 9 |
| OF | 17 SHEETS |
| FILE NO.: | 03-426TIES.pro |