

Street: CINDY LANE

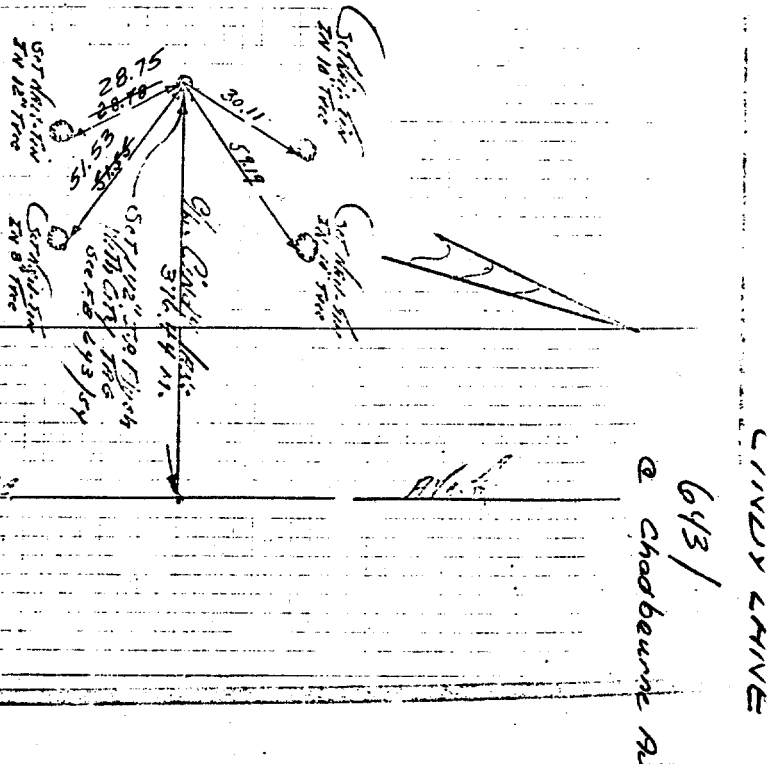
X-Street: CHAD BOURNE AVE

OFFICIAL USE ONLY

Mon Set & Ties Cindy Lane
Note Existing Ties

Historical DATA CHRISTOPHER F. RAMSETT F.B. 6/23/54

Field Exam Lawley GRAVING SITE F.P.C. CS-20-68 FR 6/23/68
FIELD CHECKED 9-13-68 by JWS



- × FD. Ramset Nail on T/C
- FD. LD. & TK. on T/C
- FD. "C" Nail on T/C
- Set LD. & TK. on T/C

Scale:
Date:
Drawn by:
W.O.:
F.B.:

OFFICIAL TIE PLAT
CITY OF RIVERSIDE

These ties are for the purpose of perpetuating the found monumentation. No claim is made as to the relationship of the points or lines shown hereon to true boundary locations.

Sheet 1 of 1
File No.:

1369.TIF