

SWING TIES

13731.TIF

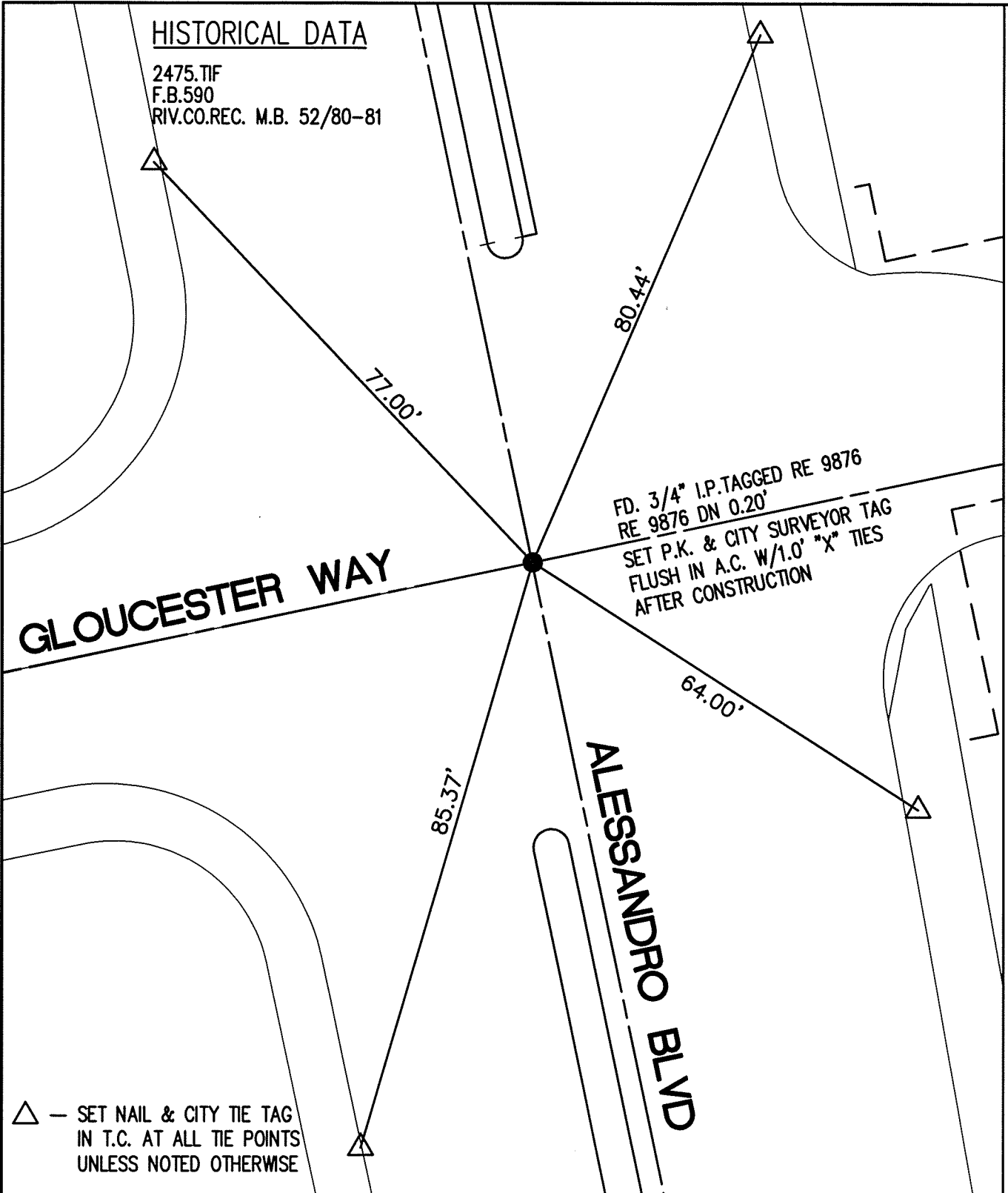
STREET: ALESSANDRO BLVD.

OFFICIAL USE ONLY

X-STREET: GLOUCESTER WAY

HISTORICAL DATA

2475.TIF
F.B.590
RIV.CO.REC. M.B. 52/80-81



SCALE: 1"=20'
DATE: 2/2011
DRAWN BY: B DURENTE
F.B.: SEE HISTORICAL DATA
SEC: 36 T.2 S.,R.5 W

OFFICIAL TIE PLAT CITY OF RIVERSIDE

THESE TIES ARE FOR THE PURPOSE OF PERPETUATING THE FOUND MONUMENTATION. NO CLAIM IS MADE AS THE RELATIONSHIP OF THE POINTS OR LINES SHOWN HEREON TO TRUE BOUNDARY LOCATIONS



SHEET 1 OF 1