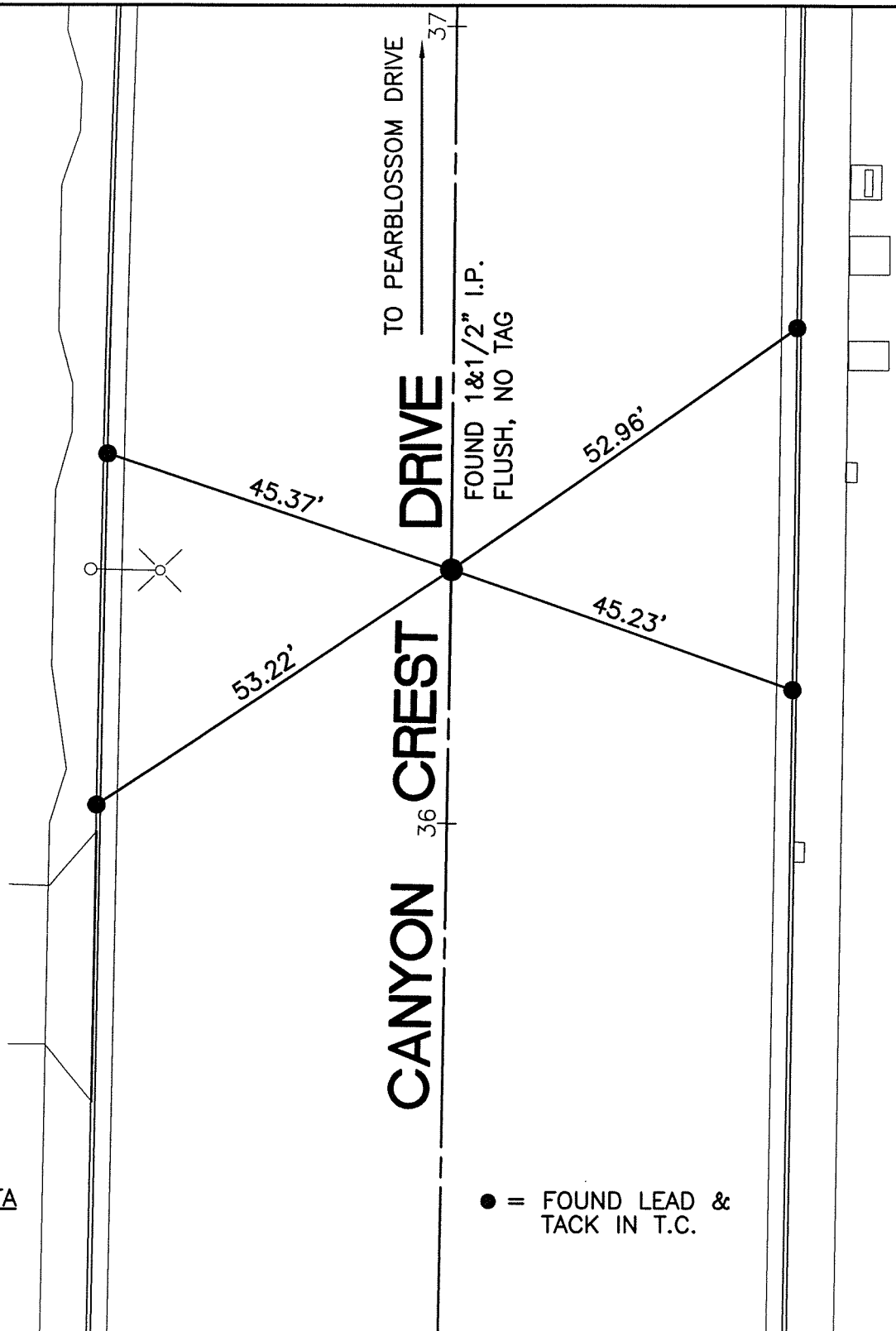


13750.TIF

STREET: CANYON CREST DRIVE X-STREET: ANGLE POINT N'LY OF MONTE VISTA  
OFFICIAL USE ONLY



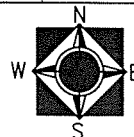
HISTORICAL DATA  
CRFB 851/41  
1785.TIF  
TRANSIT TIES

● = FOUND LEAD &  
TACK IN T.C.

SCALE: 1"=20'
DATE: 05/02/2011
DRAWN BY: B DURENTE
F.B.: SEE HISTORICAL DATA
SEC: 31/32 T. 2 S., R. 4 W

### OFFICIAL TIE PLAT CITY OF RIVERSIDE

THESE TIES ARE FOR THE PURPOSE OF PERPETUATING THE FOUND MONUMENTATION. NO CLAIM IS MADE AS THE RELATIONSHIP OF THE POINTS OR LINES SHOWN HEREON TO TRUE BOUNDARY LOCATIONS



SHEET 1 OF 1