

13752.TIF

STREET: CANYON CREST DRIVE

OFFICIAL USE ONLY

X-STREET: CREST PARK CIRCLE

HISTORICAL DATA

1783.TIF
1777.TIF
LL 11/70
SWING TIES

CENTERLINE TIE
TAGGED RE 862

CANYON CREST DRIVE

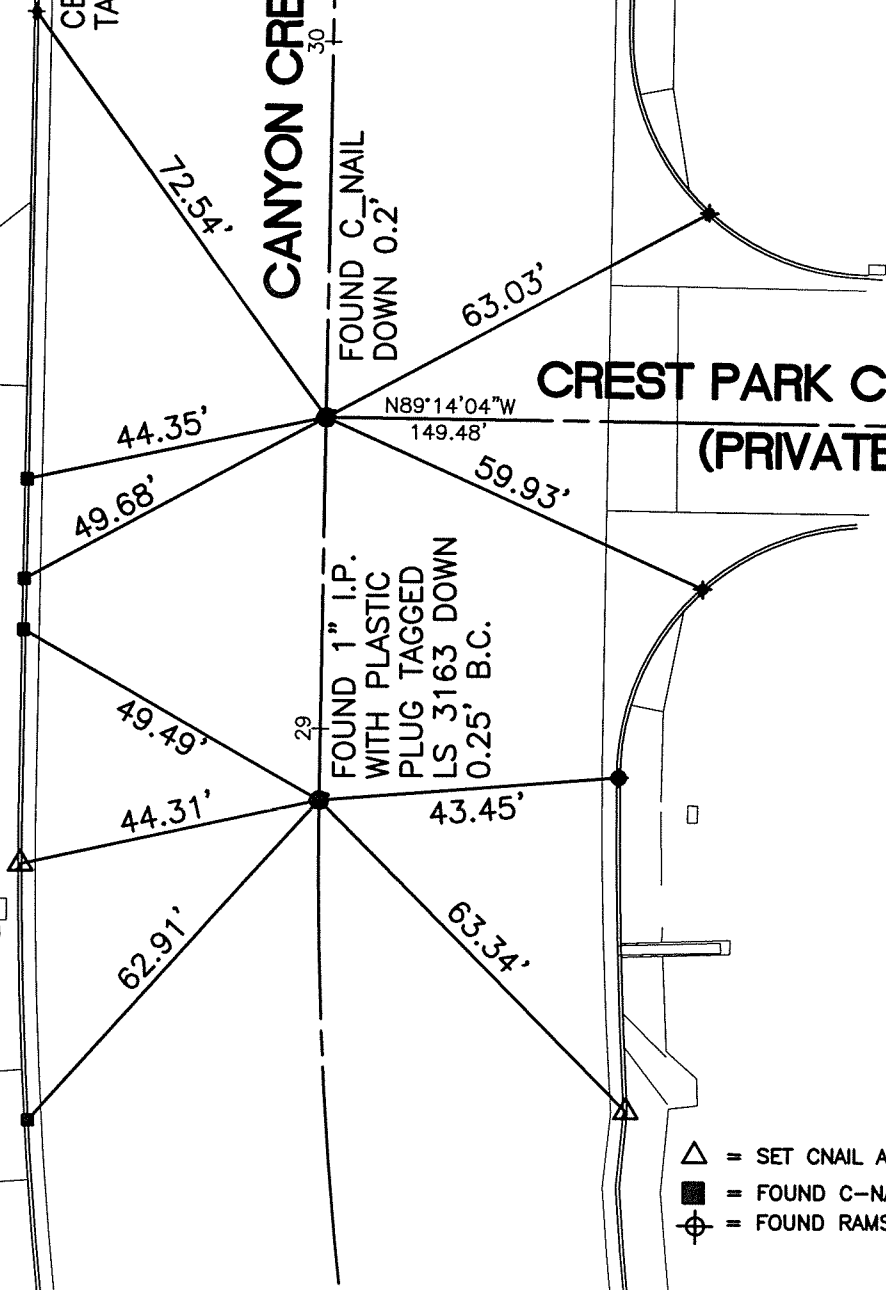
N01°00'56"E
262.24'

FOUND C-NAIL
DOWN 0.2'

CREST PARK CIRCLE
(PRIVATE ST)

N89°14'04"W
149.48'

FOUND 1" I.P.
WITH PLASTIC
PLUG TAGGED
LS 3163 DOWN
0.25' B.C.

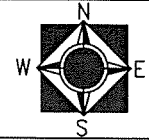


- △ = SET CNAIL AND CITY TIE TAG
- = FOUND C-NAIL
- ⊕ = FOUND RAMSET NAIL

SCALE: 1"=20'
 DATE: 05/02/2011
 DRAWN BY: B DURENTE
 F.B.: SEE HISTORICAL DATA
 SEC: 31/32 T. 2 S., R. 4 W

OFFICIAL TIE PLAT
 CITY OF RIVERSIDE

THESE TIES ARE FOR THE PURPOSE OF PERPETUATING THE FOUND MONUMENTATION. NO CLAIM IS MADE AS THE RELATIONSHIP OF THE POINTS OR LINES SHOWN HEREON TO TRUE BOUNDARY LOCATIONS



SHEET 1 OF 1