

CENTERLINE TIES FOR PARCEL MAP 31387

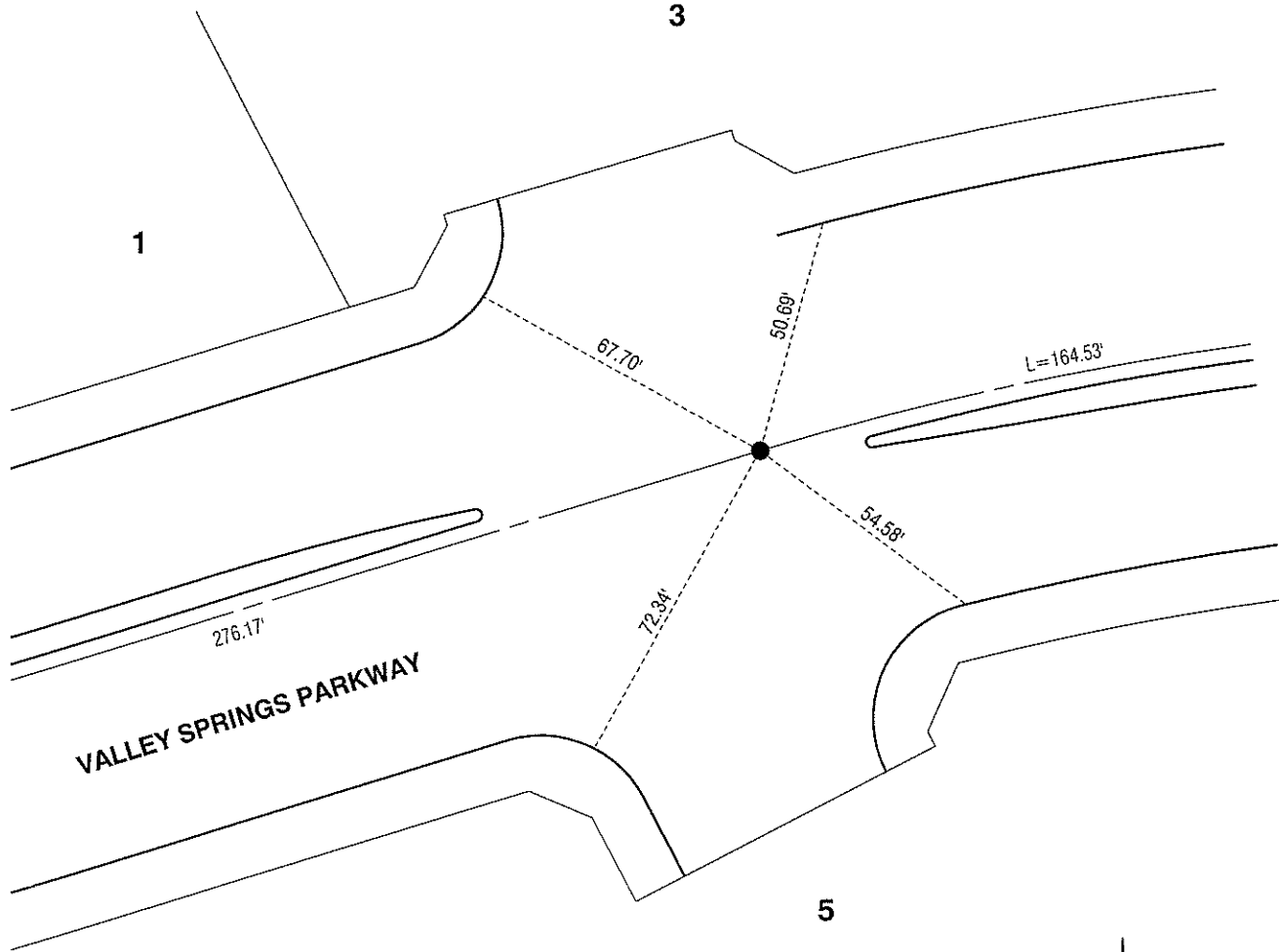
HUNSAKER & ASSOCIATES, INC.

RORY S. WILLIAMS, L.S. 6654

DATE: AUGUST, 2010

13852TIF

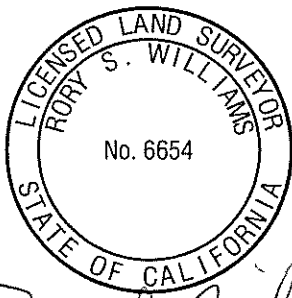
STREET: VALLEY SPRINGS PARKWAY
OFFICIAL USE ONLY



MONUMENT NOTES

- SET 8" SPIKE & WASHER STAMPED L.S. 6654.
- ⊙ SET 1" I.P. & TAG STAMPED L.S. 6654.

ALL TIE POINTS ARE LEAD, TACK & TAG STAMPED L.S. 6654 SET IN TOP OF CURB.



SCALE: 1" = 40'

Rory S. Williams 3/22/11

SCALE:
DATE:
DRAWN BY:
F.B.:
SEC: T. S., R. W

OFFICIAL TIE PLAT
CITY OF RIVERSIDE

THESE TIES ARE FOR THE PURPOSE OF PERPETUATING THE FOUND MONUMENTATION. NO CLAIM IS MADE AS THE RELATIONSHIP OF THE POINTS OR LINES SHOWN HEREON TO TRUE BOUNDARY LOCATIONS