

CENTERLINE TIES FOR PARCEL MAP 31387

HUNSAKER & ASSOCIATES, INC.

RORY S. WILLIAMS, L.S. 6654

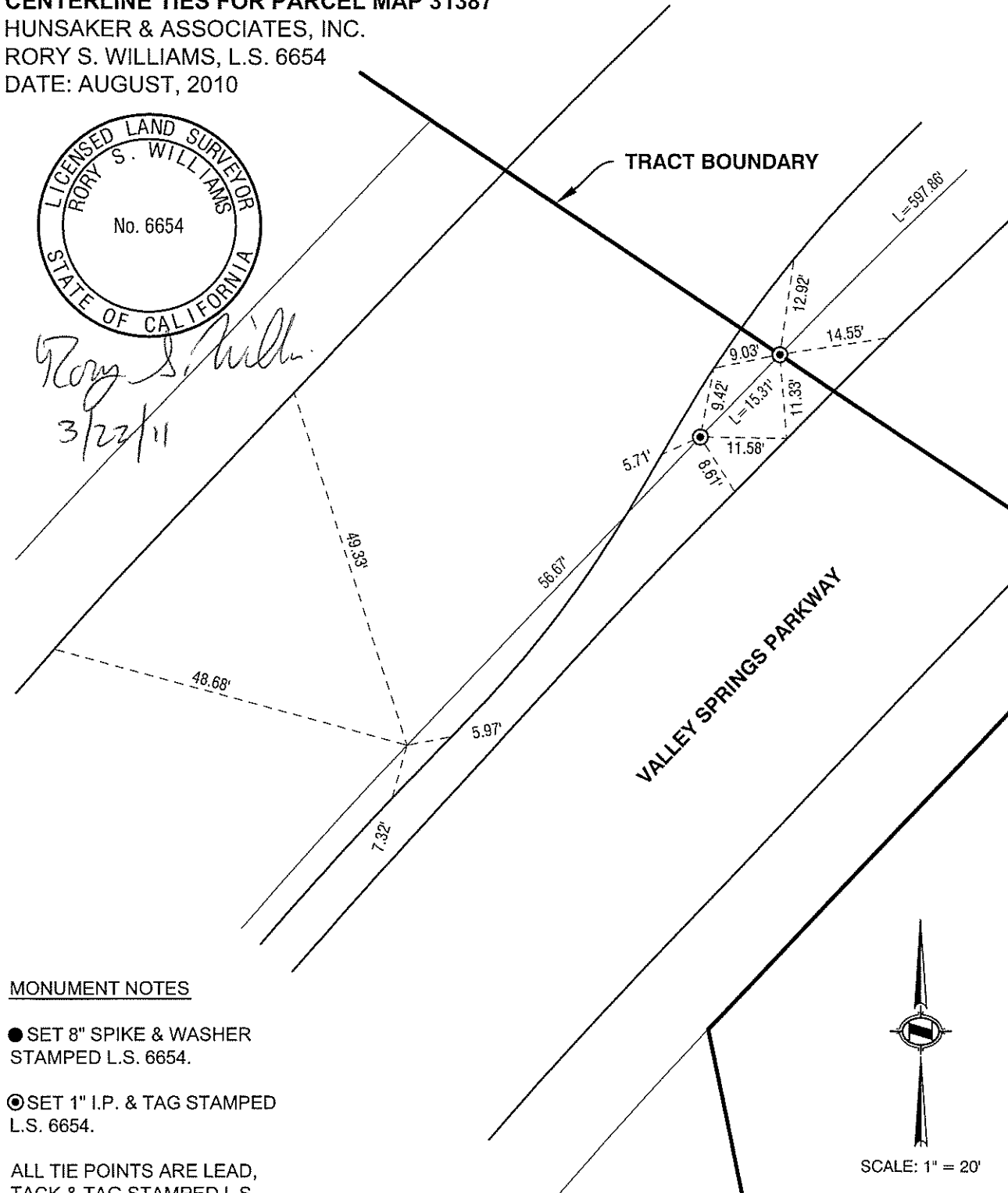
DATE: AUGUST, 2010



Rory S. Williams
3/22/11

TRACT BOUNDARY

L=597.86'



13853.TIF
STREET: VALLEY SPRINGS PARKWAY
OFFICIAL USE ONLY

MONUMENT NOTES

● SET 8" SPIKE & WASHER
STAMPED L.S. 6654.

⊙ SET 1" I.P. & TAG STAMPED
L.S. 6654.

ALL TIE POINTS ARE LEAD,
TACK & TAG STAMPED L.S.
6654 SET IN TOP OF CURB.



SCALE: 1" = 20'

SCALE:

DATE:

DRAWN BY:

F.B.:

SEC: T. S., R. W

OFFICIAL TIE PLAT
CITY OF RIVERSIDE

THESE TIES ARE FOR THE PURPOSE OF PERPETUATING THE FOUND
MONUMENTATION. NO CLAIM IS MADE AS THE RELATIONSHIP OF THE
POINTS OR LINES SHOWN HEREON TO TRUE BOUNDARY LOCATIONS

SHEET 1 OF 1