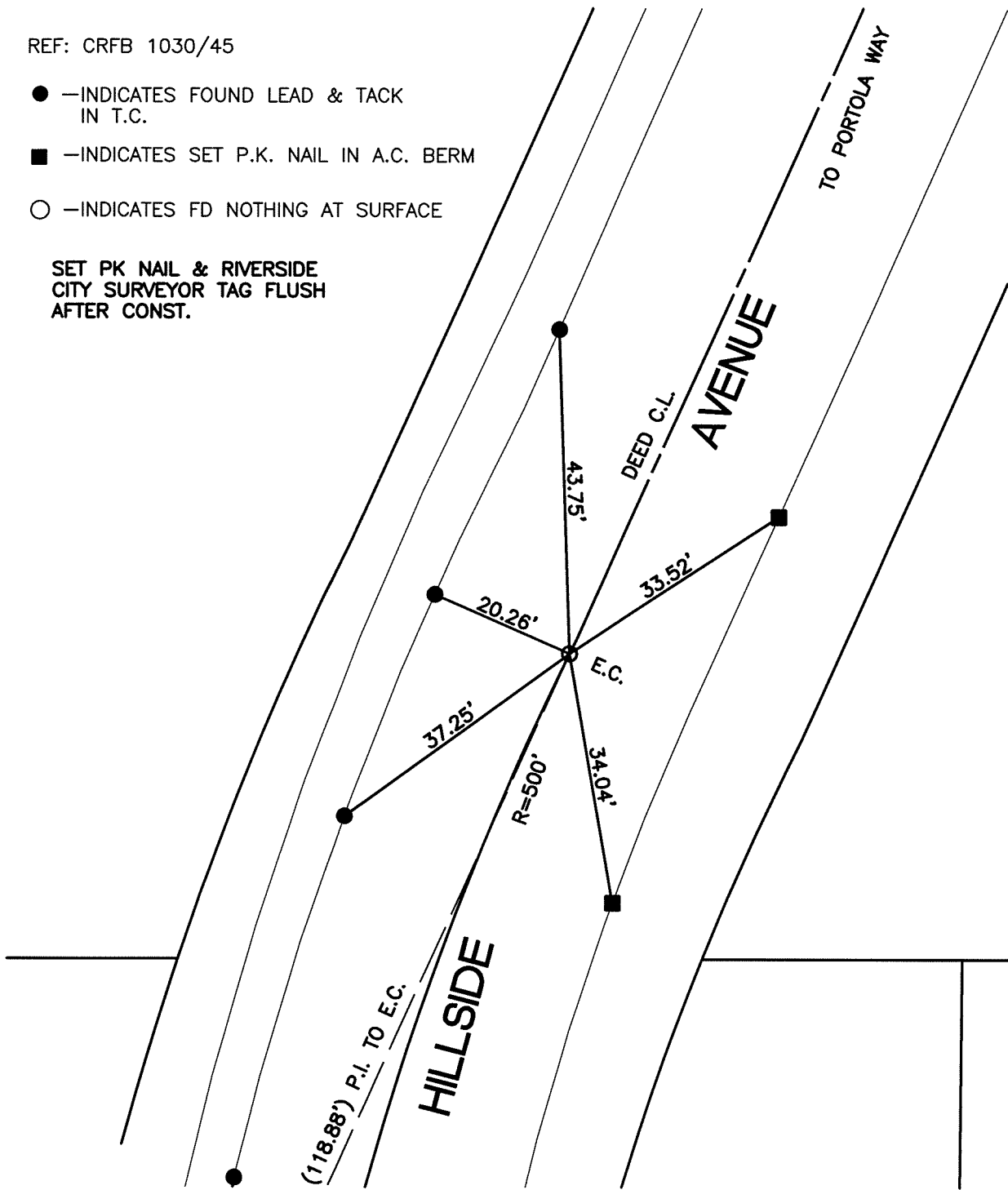


SWING TIES

REF: CRFB 1030/45

- —INDICATES FOUND LEAD & TACK IN T.C.
- —INDICATES SET P.K. NAIL IN A.C. BERM
- —INDICATES FD NOTHING AT SURFACE

SET PK NAIL & RIVERSIDE CITY SURVEYOR TAG FLUSH AFTER CONST.



13949.TIF
STREET: HILLSIDE AVENUE

X-STREET: 2ND E.C. NORTH OF ARBOR DR
OFFICIAL USE ONLY

SCALE: 1"=20'

DATE: 11/17/11

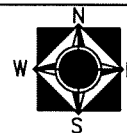
DRAWN BY: CURT

F.B.:

SEC: 32 T.2S.,R.5 W

OFFICIAL TIE PLAT CITY OF RIVERSIDE

THESE TIES ARE FOR THE PURPOSE OF PERPETUATING THE FOUND MONUMENTATION. NO CLAIM IS MADE AS THE RELATIONSHIP OF THE POINTS OR LINES SHOWN HEREON TO TRUE BOUNDARY LOCATIONS



SHEET 1 OF 1