

# SWING TIES

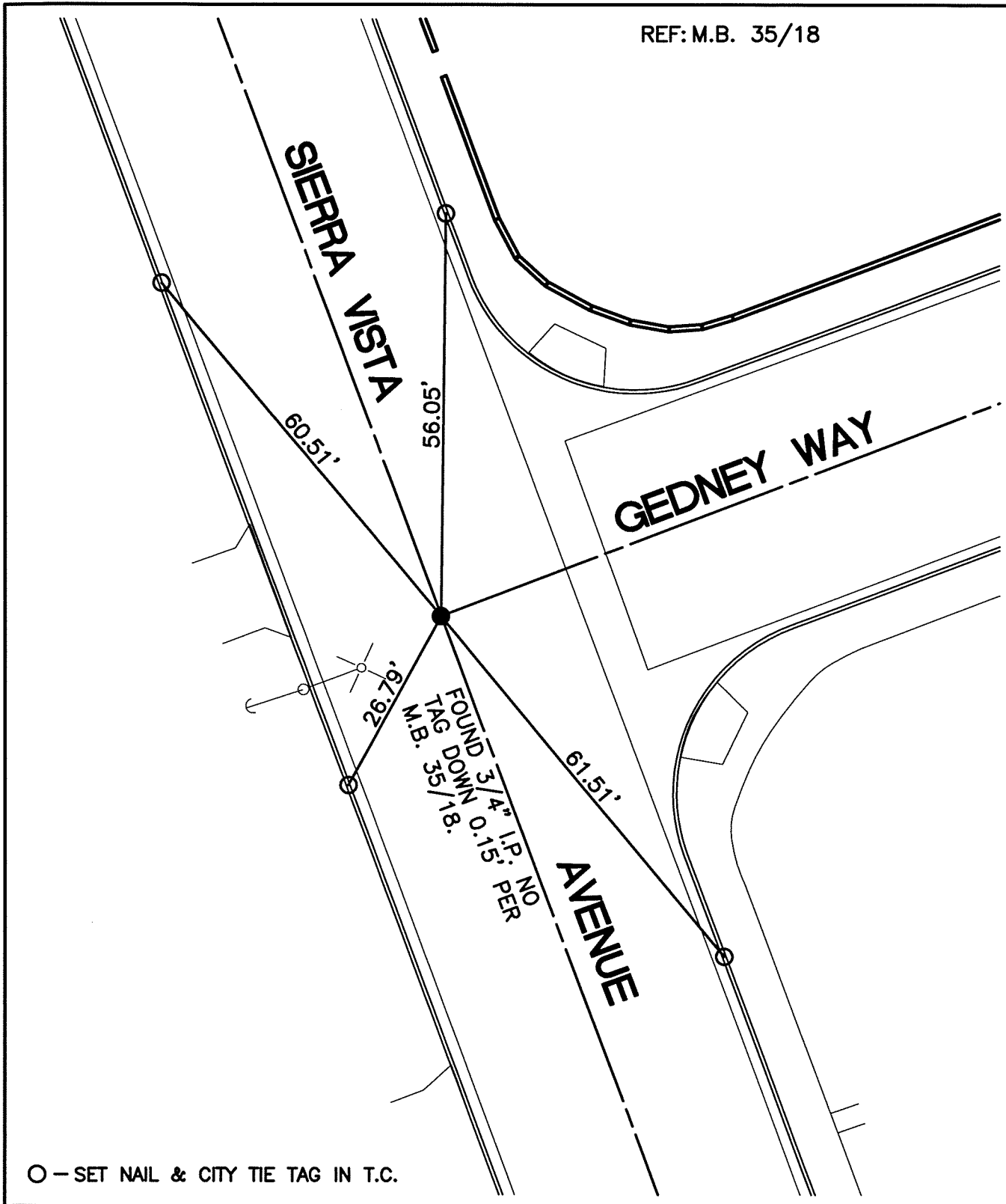
REF: M.B. 35/18

14009.F1E

STREET: SIERRA VISTA AVENUE

X-STREET: GEDNEY WAY

OFFICIAL USE ONLY



O - SET NAIL & CITY TIE TAG IN T.C.

SCALE: 1"=20'
DATE: 8/20/12
DRAWN BY: CURT
F.B.:
SEC: 10 T.3S., R.6W

**OFFICIAL TIE PLAT**  
CITY OF RIVERSIDE

THESE TIES ARE FOR THE PURPOSE OF PERPETUATING THE FOUND MONUMENTATION. NO CLAIM IS MADE AS THE RELATIONSHIP OF THE POINTS OR LINES SHOWN HEREON TO TRUE BOUNDARY LOCATIONS

SHEET 1 OF 1