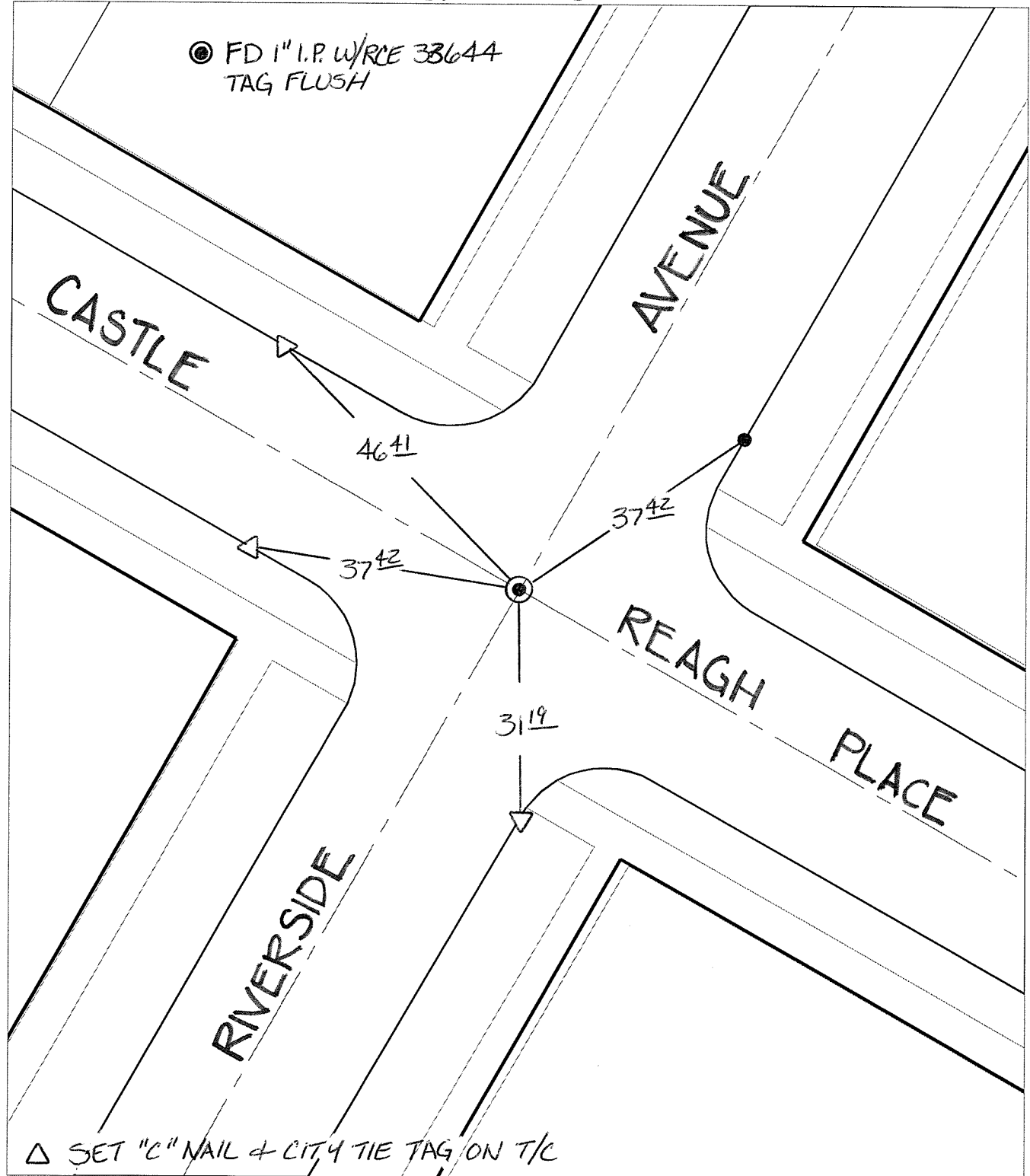


14112.71E

Street: RIVERSIDE AVENUE X-Street: CASTLE REAGH PLACE  
OFFICIAL USE ONLY

SWING TIES



△ SET "C" NAIL & CITY TIE TAG ON T/C

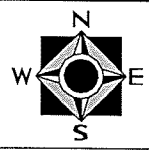
- ✕ FD. Ramset Nail on T/C      ● FD. LD. & TK. on T/C      P.K. and City Engineer tag to be set @ surface after street construction is complete. (If possible)
- FD. "C" Nail on T/C      ○ Set LD. & TK. on T/C

Scale: 1" = 20'  
 Date: 01/07/13  
 Drawn by: pw  
 F.B.:  
 TR-Sec: T2SR5W-26

## OFFICIAL TIE PLAT

### CITY OF RIVERSIDE

*These ties are for the purpose of perpetuating the found monumentation. No claim is made as to the relationship of the points or lines shown hereon to true boundary locations.*



Sheet 1 of 1  
 Cadme MB: 39-5