

14145.TIF

Street:

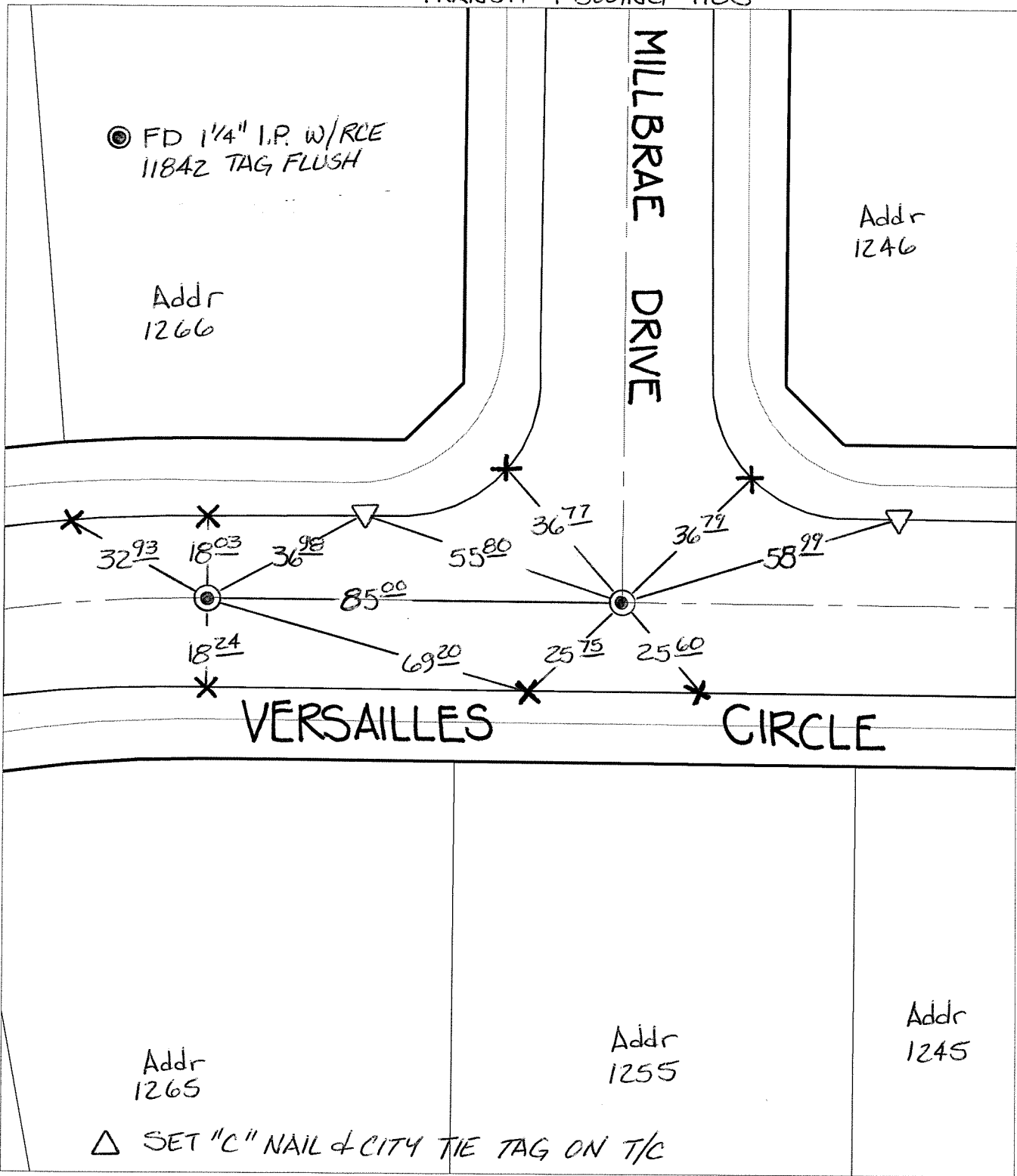
VERSAILLES CIRCLE

X-Street:

MILLBRAE DRIVE

OFFICIAL USE ONLY

TRANSIT & SWING TIES



⊙ FD 1/4" I.P. W/RCE
11842 TAG FLUSH

Addr
1266

Addr
1246

MILLBRAE
DRIVE

32⁹³

18⁰³

36⁹⁸

55⁸⁰

36⁷⁷

36⁷⁹

58⁹⁹

85⁰⁰

18²⁴

69²⁰

25⁷⁵

25⁶⁰

VERSAILLES

CIRCLE

Addr
1265

Addr
1255

Addr
1245

△ SET "C" NAIL & CITY TIE TAG ON T/C

- ✕ FD. Ramset Nail on T/C
- FD. LD. & TK. on T/C
- FD. "C" Nail on T/C
- Set LD. & TK. on T/C

P.K. and City Engineer tag to be set @
surface after street construction is
complete. (If possible)

Scale: 1" = 30'
 Date: 03/01/13
 Drawn by: pw
 F.B.:
 TR-Sec: T3SR4W-7

OFFICIAL TIE PLAT
CITY OF RIVERSIDE

*These ties are for the purpose of perpetuating the found
 monumentation. No claim is made as to the relationship of
 the points or lines shown hereon to true boundary locations.*



Sheet 1 of 1
 Cadme MB: 71-4