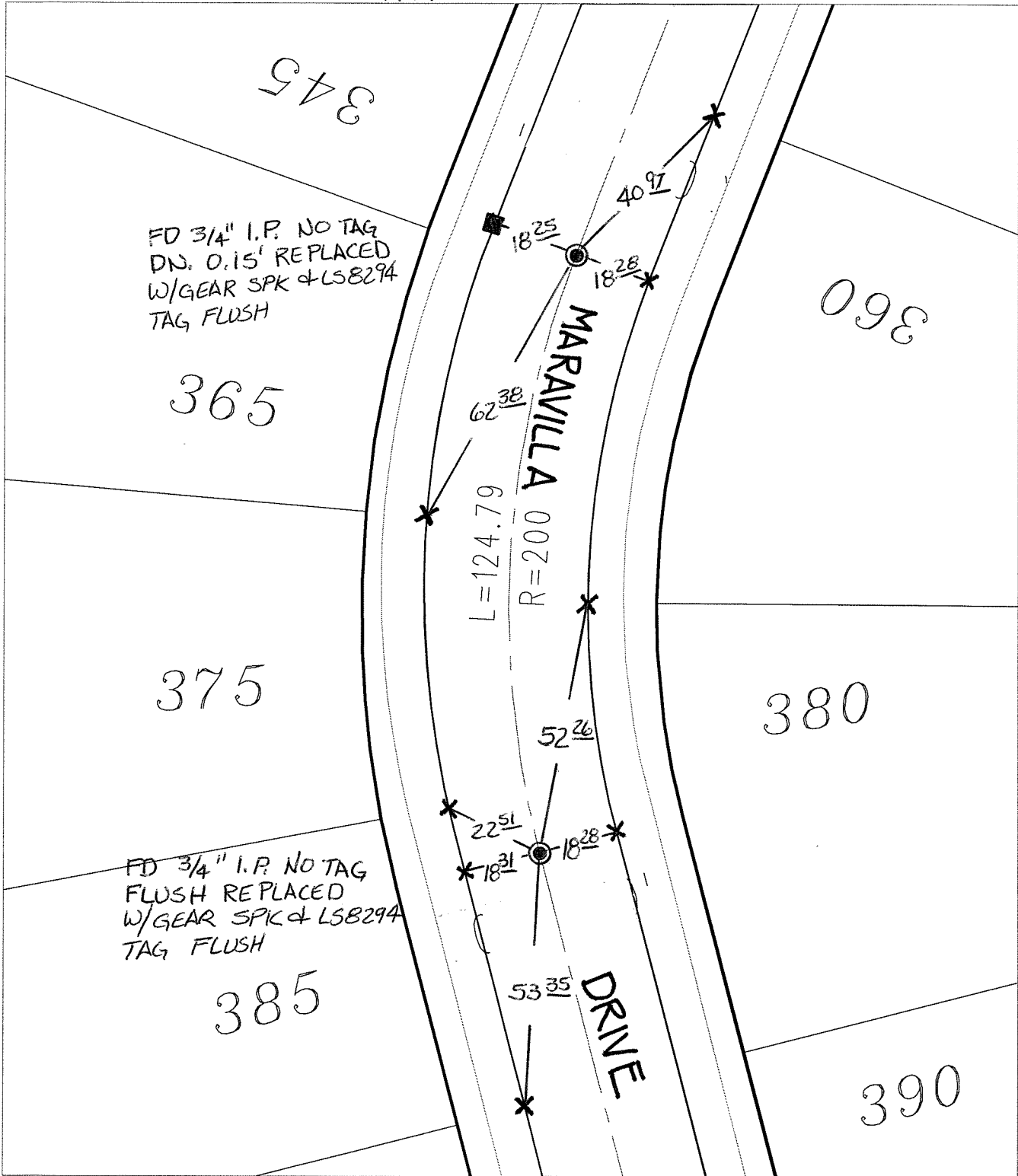


14198.T1F

Street: MARAVILLA DRIVE BC & EC X-Street: WEST OF VALENCIA HILL

OFFICIAL USE ONLY

TRANSIT & SWING TIES



✕ FD. Ramset Nail on T/C ● FD. LD. & TK. on T/C P.K. and City Engineer tag to be set @
 ■ FD. "C" Nail on T/C ○ Set LD. & TK. on T/C surface after street construction is
 complete. (if possible)

Scale: 1" = 30'
 Date: 04/26/13
 Drawn by: pw
 F.B.:
 TR-Sec: T2SR4W-20

OFFICIAL TIE PLAT
CITY OF RIVERSIDE

These ties are for the purpose of perpetuating the found monumentation. No claim is made as to the relationship of the points or lines shown hereon to true boundary locations.

Sheet 1 of 1
Cadme MB: 27-8