

14608.TIF

Street:

CANNON ROAD

X-Street:

TIVERTON WAY

OFFICIAL USE ONLY

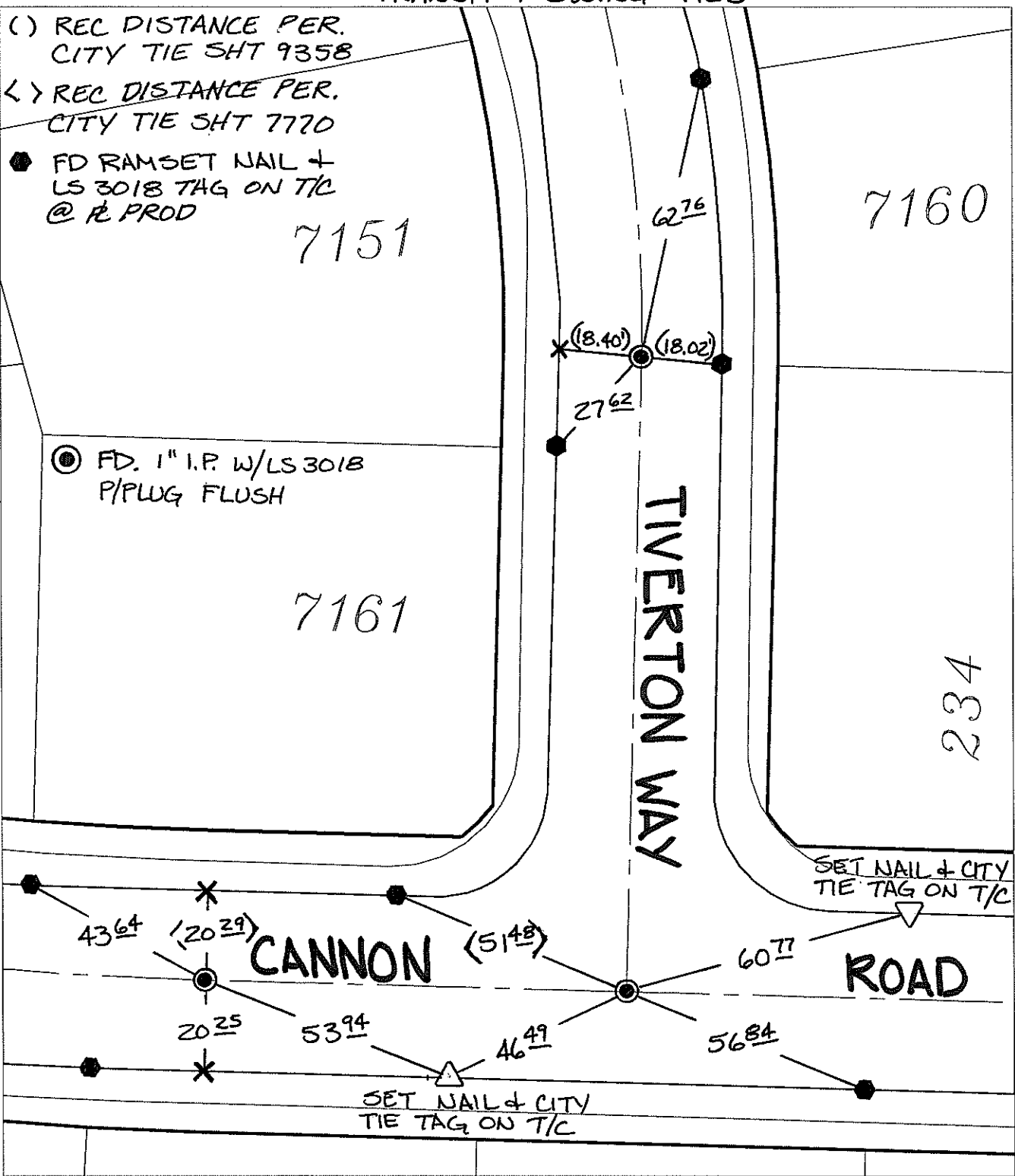
TRANSIT & SWING TIES

() REC DISTANCE PER. CITY TIE SHT 9358

< > REC DISTANCE PER. CITY TIE SHT 7720

● FD RAMSET NAIL + LS 3018 TAG ON T/C @ P. PROD

⊙ FD. 1" I.P. W/LS 3018 P/PLUG FLUSH



- × FD. Ramset Nail on T/C ● FD. LD. & TK. on T/C P.K. and City Engineer tag to be set @ surface after street construction is complete. (If possible)
- FD. "C" Nail on T/C ○ Set LD. & TK. on T/C

Scale: 1" = 30'

Date: 01/05/17


Drawn by: pw

F.B.:

TR-Sec: T3SR4W-8

OFFICIAL TIE PLAT
CITY OF RIVERSIDE

These ties are for the purpose of perpetuating the found monumentation. No claim is made as to the relationship of the points or lines shown hereon to true boundary locations.



Sheet 1 of 1
Cadme MB: 72-5