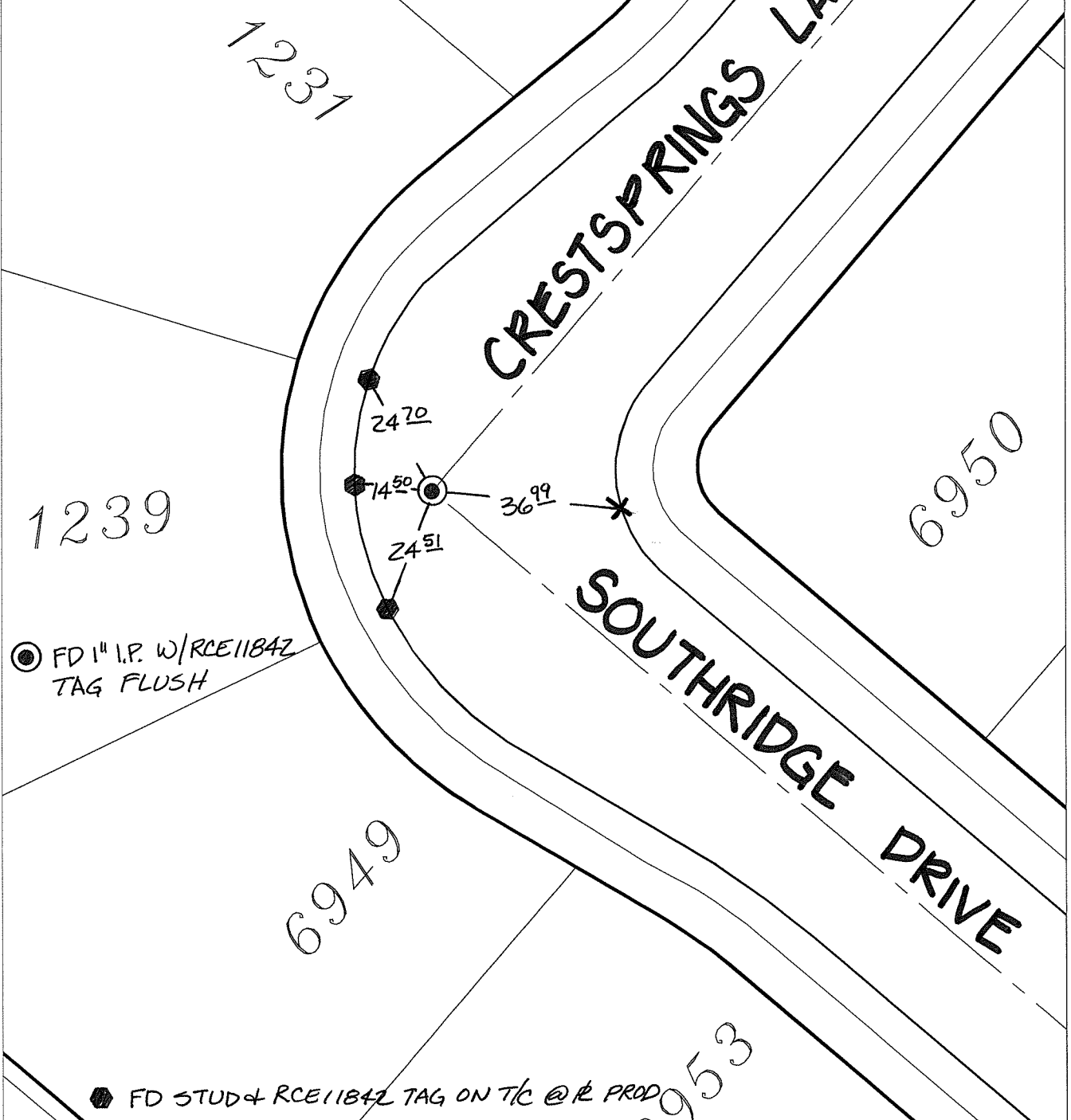


14638.TIF

Street: SOUTHRIDGE DRIVE X-Street: CRESTSPRINGS LANE  
OFFICIAL USE ONLY

HISTORICAL DATA  
CITY TIE SHT 1592.TIF

SWING TIES



- 
- FD. Ramset Nail on T/C
  FD. LD. & TK. on T/C
  FD. "C" Nail on T/C
  Set LD. & TK. on T/C
 P.K. and City Engineer tag to be set @ surface after street construction is complete. (If possible)

Scale: 1" = 30'

Date: 12/17/16

Drawn by: pw

F.B.:

TR-Sec: T3SR4W-7

**OFFICIAL TIE PLAT**  
CITY OF RIVERSIDE

*These ties are for the purpose of perpetuating the found monumentation. No claim is made as to the relationship of the points or lines shown hereon to true boundary locations.*

Sheet 1 of 1

Cadme MB: 71-4