

SWING TIES

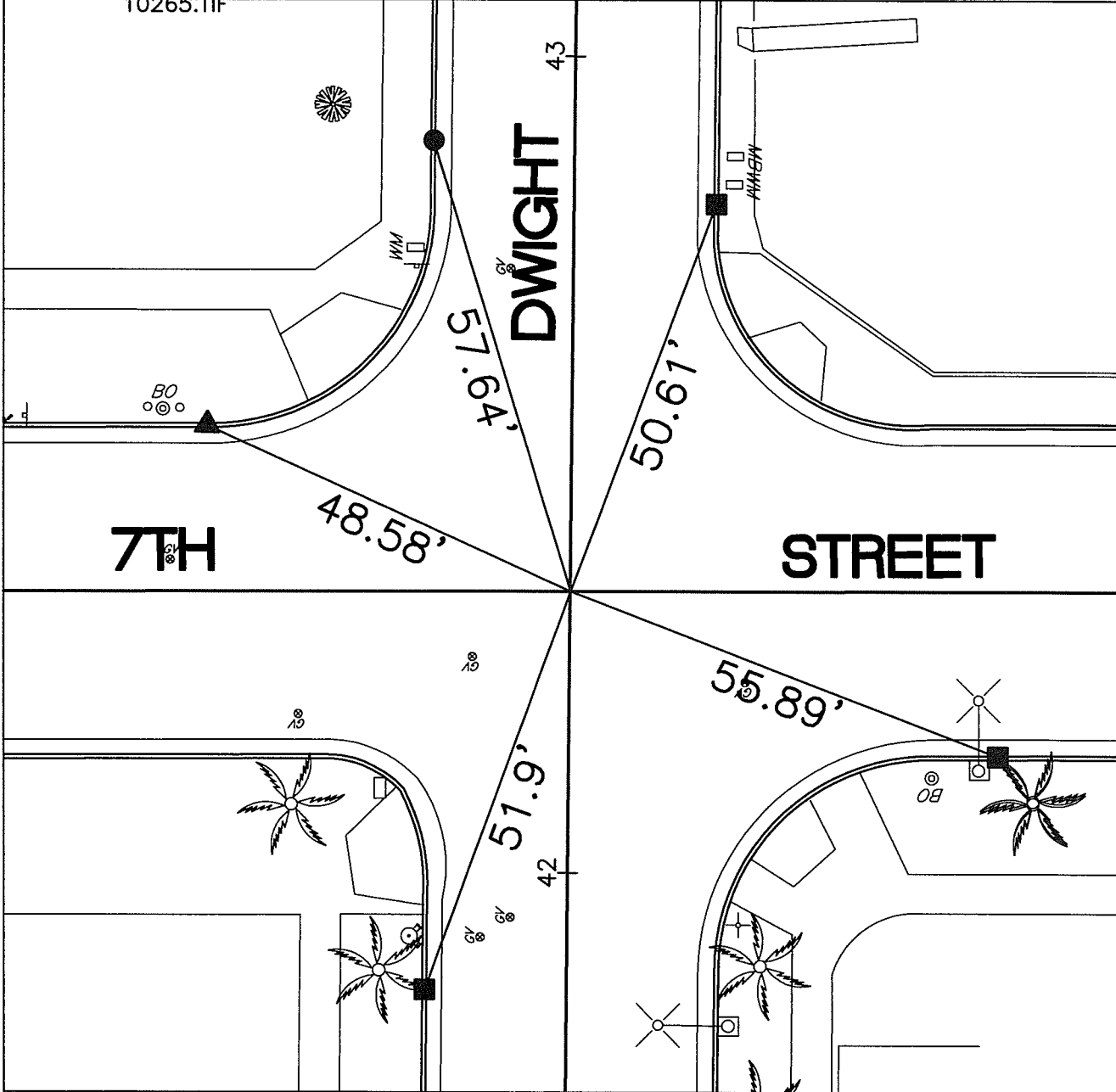
14758.TIF

STREET: DWIGHT AVENUE

OFFICIAL USE ONLY

X-STREET: SEVENTH STREET

HISTORICAL DATA
10265.TIF



- ▲ — FOUND MAG. NAIL IN T.C.
- — FOUND NAIL AND CITY TIE TAG IN T.C.
- — FOUND NAIL SHANK IN T.C.
- ⊙ — FOUND PK NAIL AND WASHER STAMPED "RIVERSIDE CITY SURVEYOR" PER 10265.TIF

SCALE: 1"=20'

DATE: JANUARY 18, 2018

DRAWN BY: JDF

F.B.:

SEC: 24 T.2S., R.5W

OFFICIAL TIE PLAT CITY OF RIVERSIDE

THESE TIES ARE FOR THE PURPOSE OF PERPETUATING THE FOUND MONUMENTATION. NO CLAIM IS MADE AS THE RELATIONSHIP OF THE POINTS OR LINES SHOWN HEREON TO TRUE BOUNDARY LOCATIONS



SHEET 1 OF 1