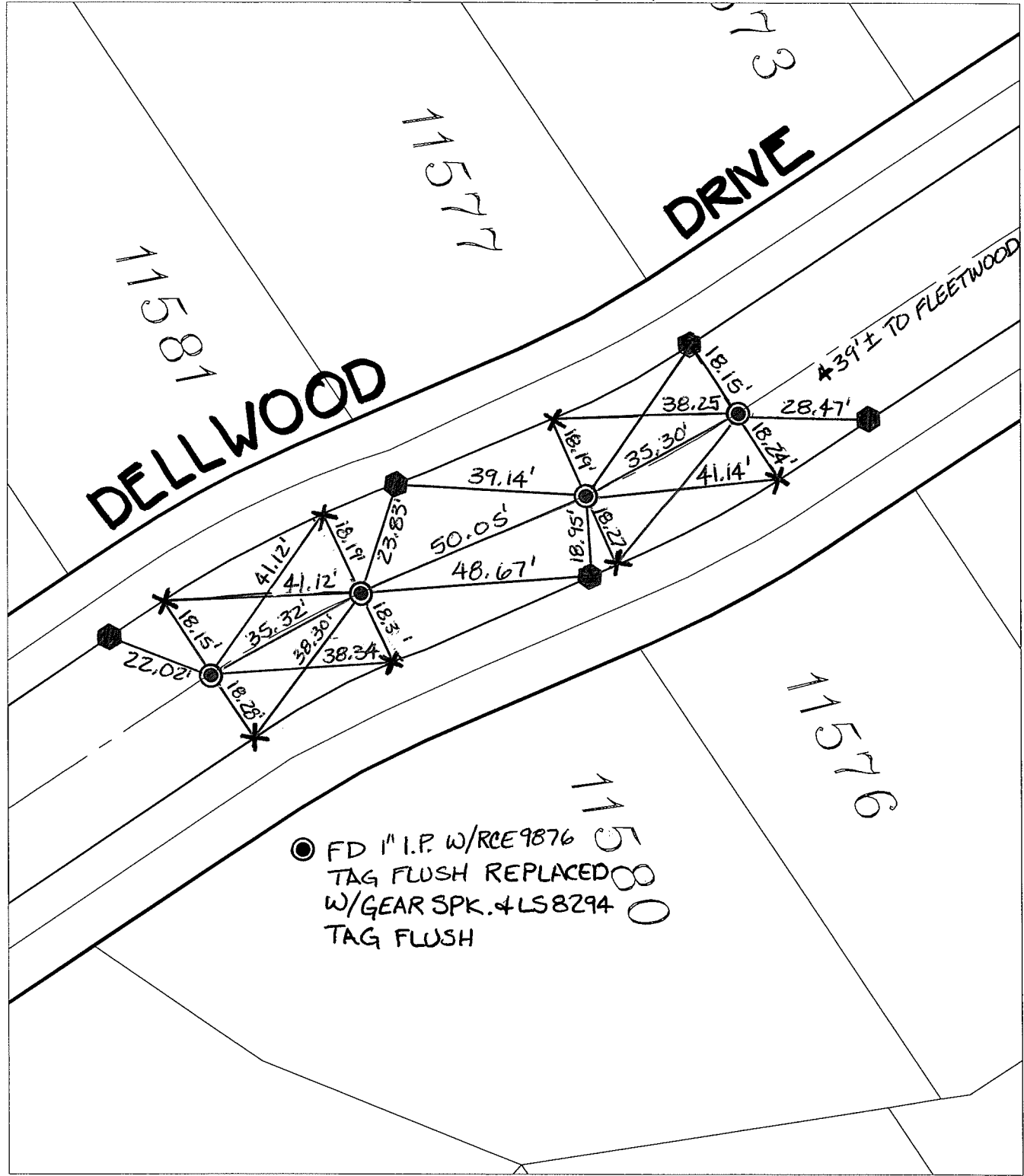


14785.T1E

Street: DELLWOOD DRIVE BC'S & X-Street: EC'S W. OF FLEETWOOD  
OFFICIAL USE ONLY

TRANSIT & SWING TIES



● FD 1" I.P. W/RCE9876  
 TAG FLUSH REPLACED  
 W/GEAR SPK. & LS8294  
 TAG FLUSH

- ✕ FD. Ramset Nail on T/C      ● FD. LD. & TK. on T/C
- FD. "C" Nail on T/C      ○ Set LD. & TK. on T/C

P.K. and City Engineer tag to be set @ surface after street construction is complete. (If possible)

Scale: 1" = 30'  
 Date: 06/10/15  
 Drawn by: pw  
 F.B.:  
 TR-Sec: T3SR6W-23

## OFFICIAL TIE PLAT

### CITY OF RIVERSIDE

*These ties are for the purpose of perpetuating the found monumentation. No claim is made as to the relationship of the points or lines shown hereon to true boundary locations.*



Sheet 1 of 1  
 Cadme MB: 94-2