

14788.TIF

Street:

STOCKTON COURT

X-Street:

CUL-DE-SAC

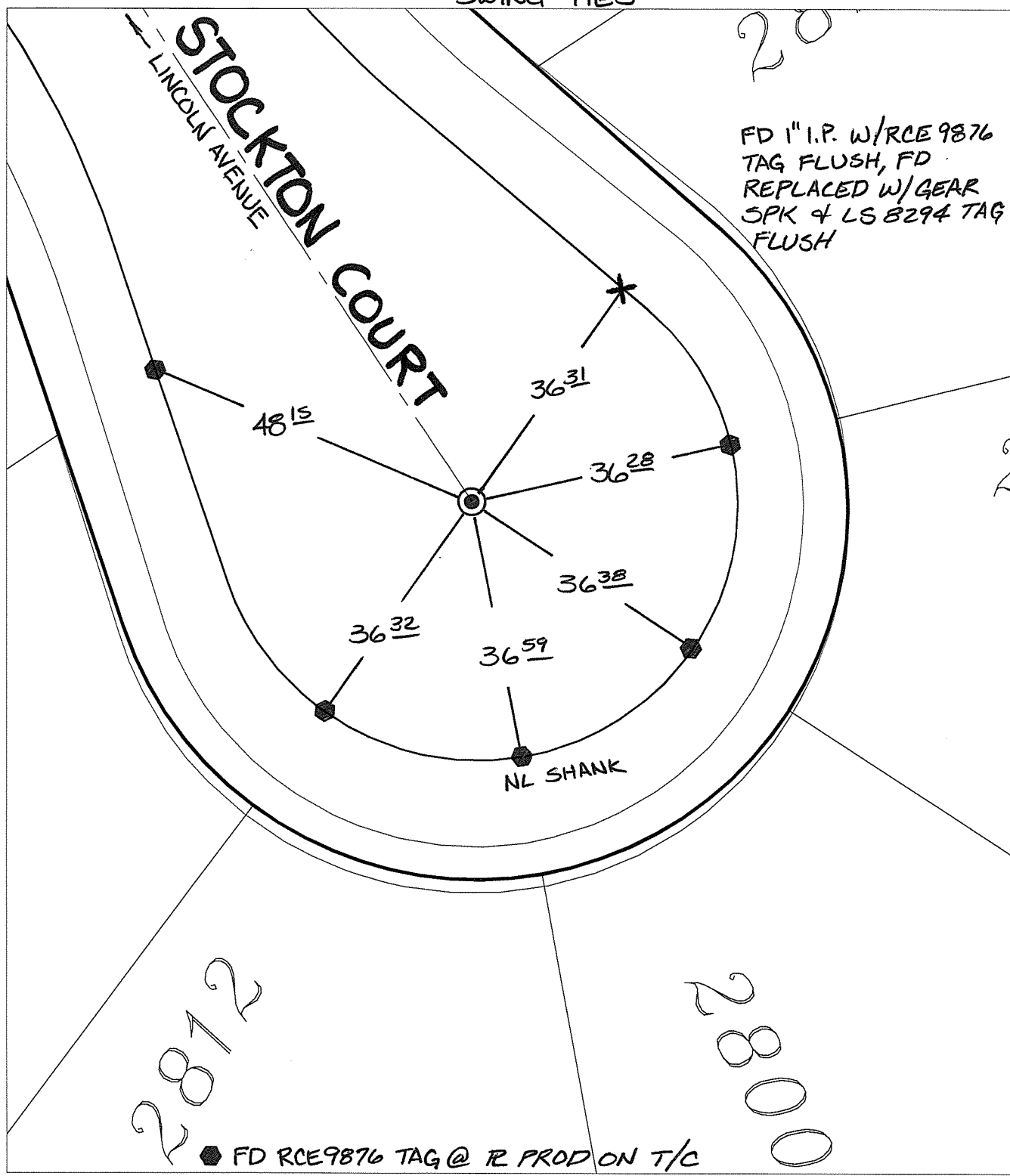
OFFICIAL USE ONLY

SWING TIES

20

FD 1" I.P. W/RCE 9876
TAG FLUSH, FD
REPLACED W/GEAR
SPK & LS 8294 TAG
FLUSH

STOCKTON COURT
LINCOLN AVENUE




● FD RCE9876 TAG @ R PROD ON T/C

- ✕ FD. Ramset Nail on T/C
- FD. LD. & TK. on T/C
- FD. "C" Nail on T/C
- Set LD. & TK. on T/C
- P.K. and City Engineer tag to be set @ surface after street construction is complete. (If possible)

Scale: 1" = 20'
 Date: 05/11/16
 Drawn by: pw
 F.B.:
 TR-Sec: T3SR5W-18

OFFICIAL TIE PLAT
CITY OF RIVERSIDE

These ties are for the purpose of perpetuating the found monumentation. No claim is made as to the relationship of the points or lines shown hereon to true boundary locations.



Sheet 1 of 1
 Cadme MB: 81-3