

14805.TIF

Street:

LOCKERTON LANE

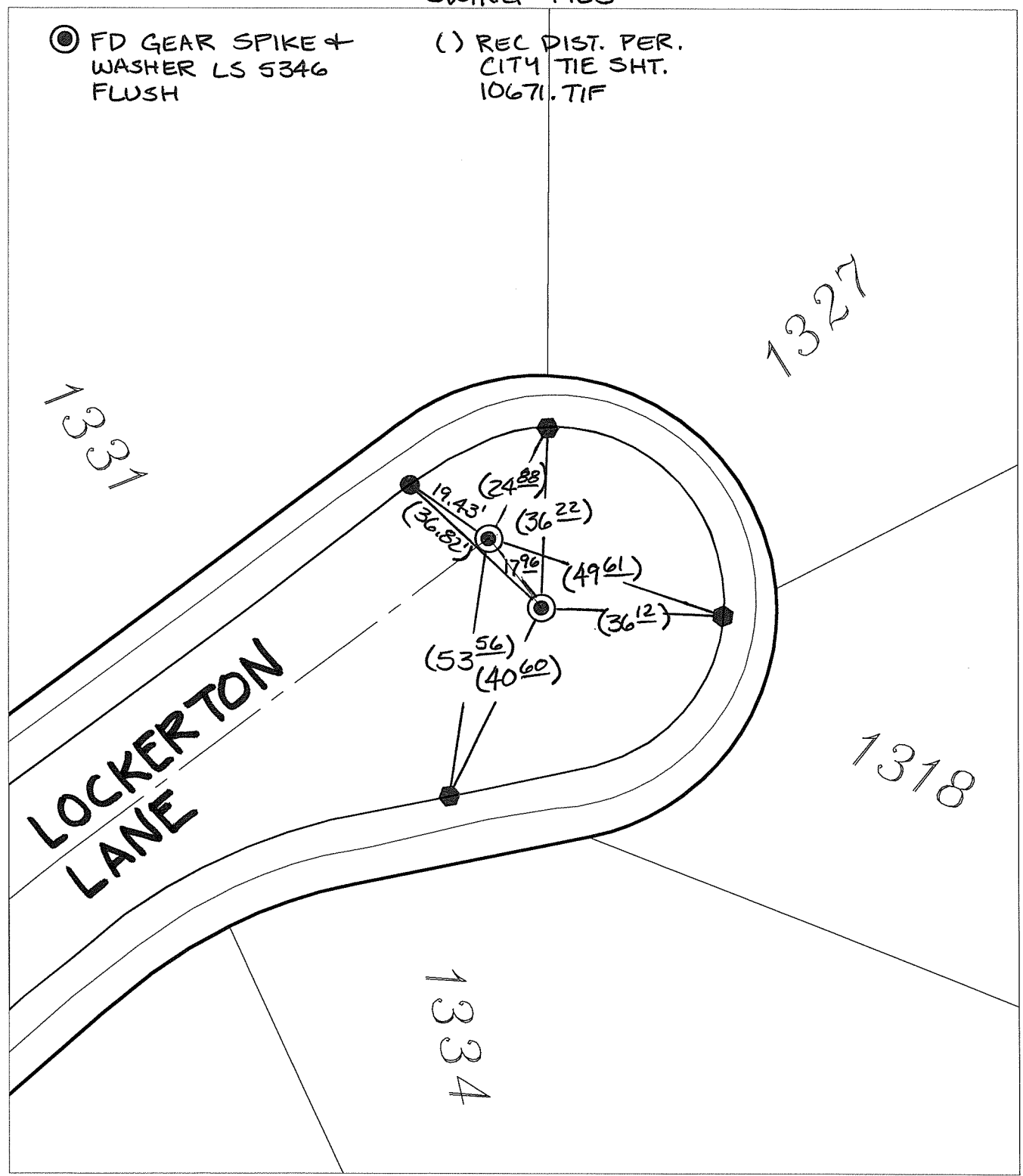
X-Street:
OFFICIAL USE ONLY

CUL-DE-SAC

SWING TIES

⊙ FD GEAR SPIKE +
WASHER LS 5346
FLUSH

() REC DIST. PER.
CITY TIE SHT.
10671.TIF



- ⊗ FD. Ramset Nail on T/C
- FD. LD. & TK. on T/C
- FD. "C" Nail on T/C
- Set LD. & TK. on T/C

P.K. and City Engineer tag to be set @
surface after street construction is
complete. (If possible)

Scale: 1" = 30'

Date: 04/25/16

Drawn by: pw

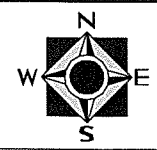
F.B.:

TR-Sec: T2SR4W-33

OFFICIAL TIE PLAT

CITY OF RIVERSIDE

*These ties are for the purpose of perpetuating the found
monumentation. No claim is made as to the relationship of
the points or lines shown hereon to true boundary locations.*



Sheet 1 of 1

Cadme MB: 58-3