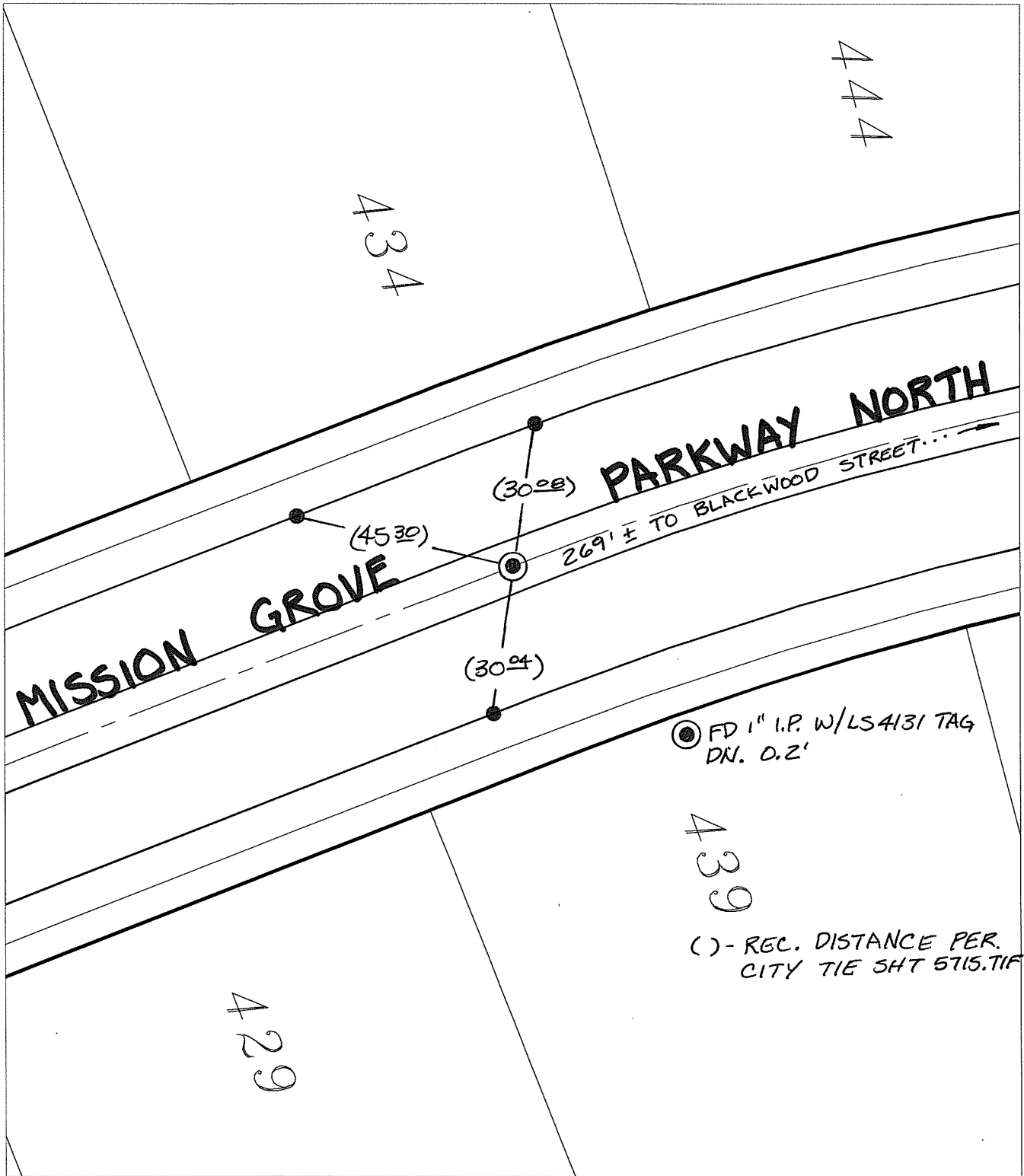


14820.TIF

Street: MISSION GROVE PARKWAY N. X-StreetBC W. OF BLACKWOOD ST.

OFFICIAL USE ONLY

TRANSIT + SWING TIES



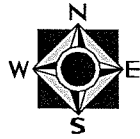
- ✕ FD. Ramset Nail on T/C ● FD. LD. & TK. on T/C P.K. and City Engineer tag to be set @ surface after street construction is complete. (If possible)
- FD. "C" Nail on T/C ○ Set LD. & TK. on T/C

() - REC. DISTANCE PER. CITY TIE SHT 5715.TIF

Scale: 1" = 30'
 Date: 11/21/16
 Drawn by: pw
 F.B.:
 TR-Sec: T3SR4W-8

OFFICIAL TIE PLAT
CITY OF RIVERSIDE

These ties are for the purpose of perpetuating the found monumentation. No claim is made as to the relationship of the points or lines shown hereon to true boundary locations.



Sheet 1 of 1
 Cadme MB: 72-3