

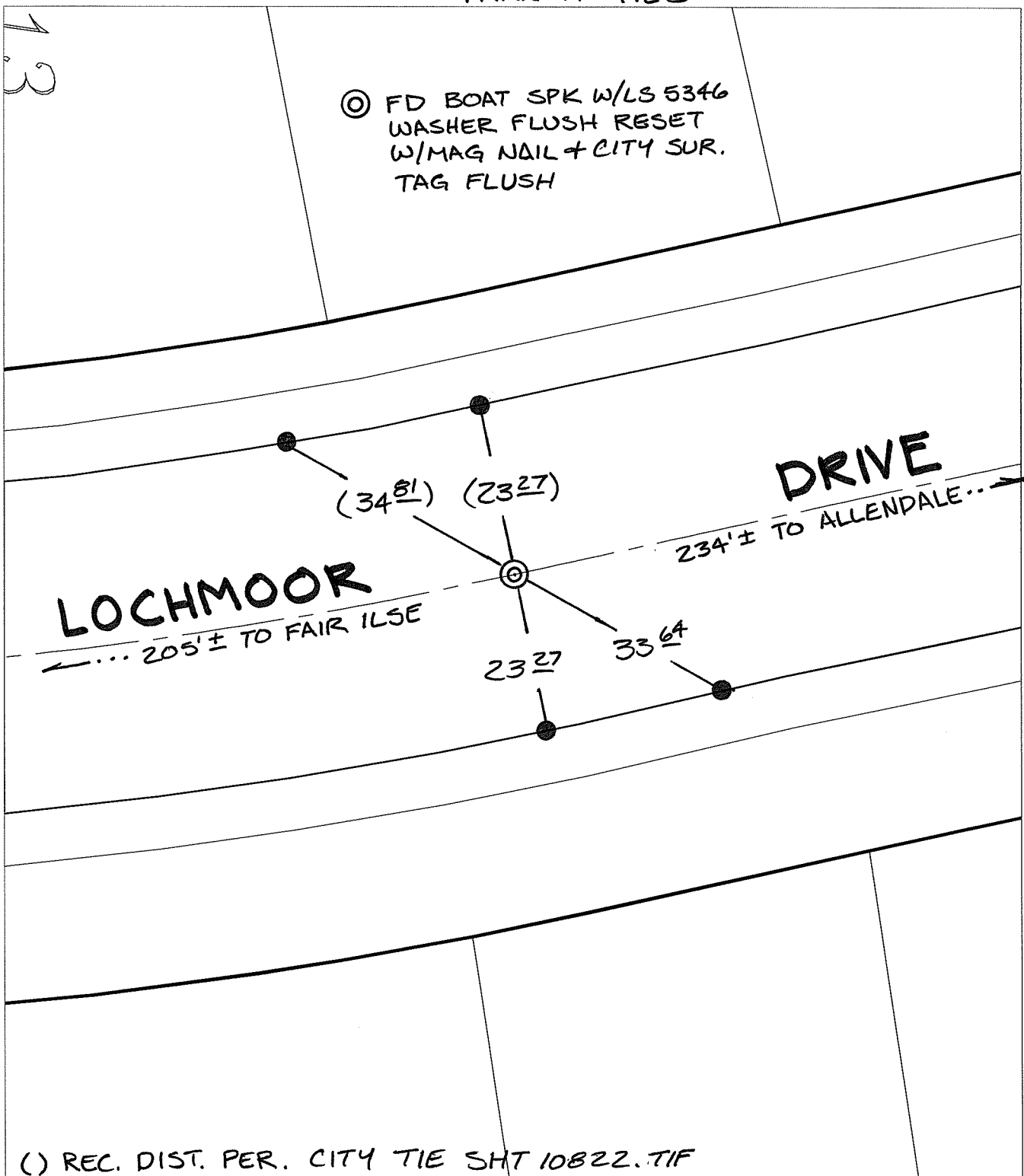
14864.TIF

Street: LOCHMOOR DRIVE EC 205' X-Street: +/- E. OF FAIR ILSE DR.

OFFICIAL USE ONLY

TRANSIT TIES

⊙ FD BOAT SPK W/LS 5346
WASHER FLUSH RESET
W/MAG NAIL + CITY SUR.
TAG FLUSH



() REC. DIST. PER. CITY TIE SH1 10822.TIF

- ✕ FD. Ramset Nail on T/C ● FD. LD. & TK. on T/C P.K. and City Engineer tag to be set @ surface after street construction is complete. (If possible)
- FD. "C" Nail on T/C ○ Set LD. & TK. on T/C

Scale: 1" = 20'

Date: 01/21/15


Drawn by: pw

F.B.:

TR-Sec: T2SR4W-33

OFFICIAL TIE PLAT
CITY OF RIVERSIDE

These ties are for the purpose of perpetuating the found monumentation. No claim is made as to the relationship of the points or lines shown hereon to true boundary locations.



Sheet 1 of 1

Cadme MB: 58-3