

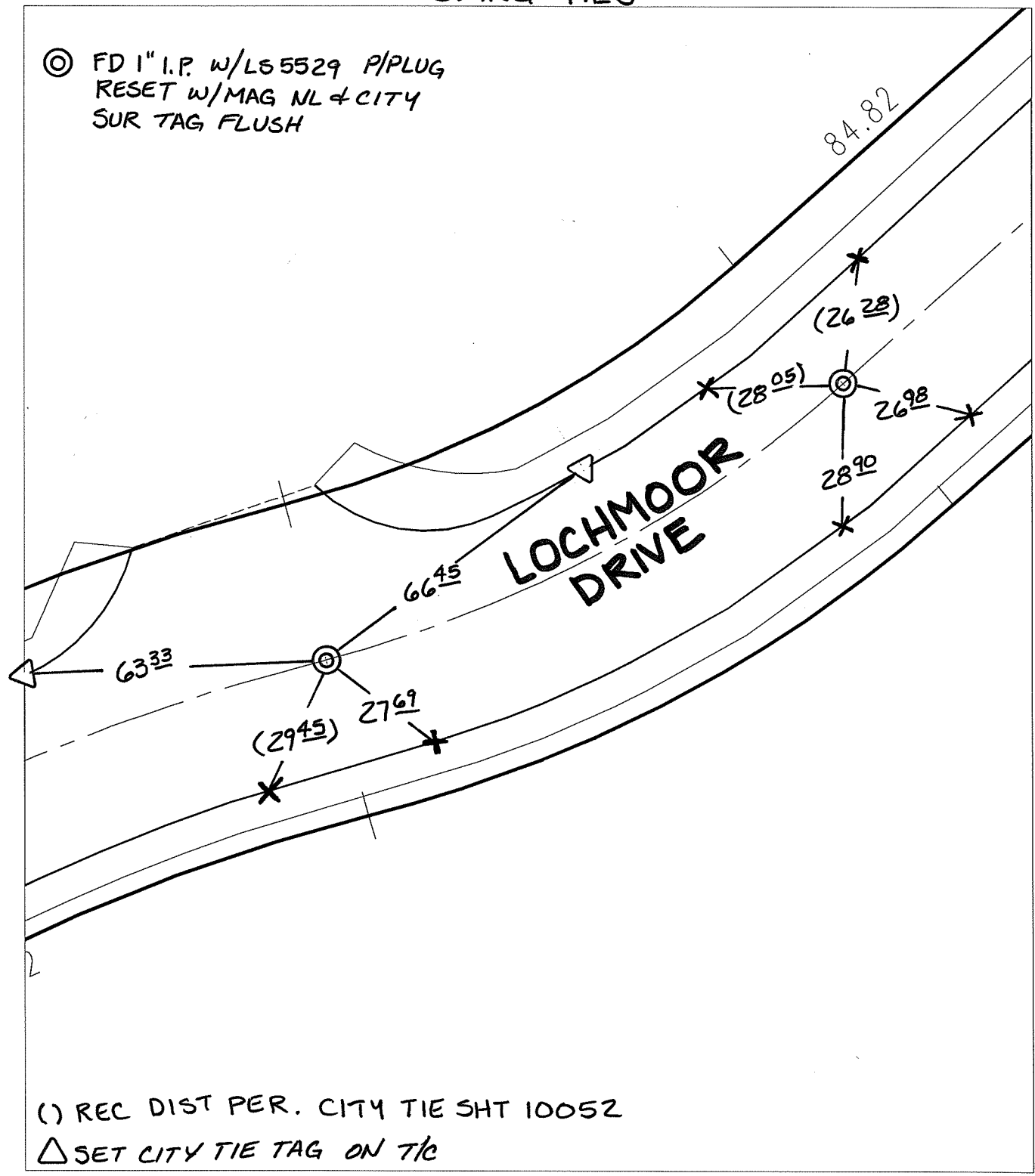
14882.TIF

Street: LOCHMOOR DRIVE BC & EC X-STRIP ONLY OF SYCAMORE CANYON

OFFICIAL USE ONLY

SWING TIES

⊙ FD 1" I.P. W/L5529 P/PLUG
RESET W/MAG NL & CITY
SUR TAG FLUSH



() REC DIST PER. CITY TIE SHT 10052

△ SET CITY TIE TAG ON T/C

- × FD. Ramset Nail on T/C
- FD. LD. & TK. on T/C
- FD. "C" Nail on T/C
- Set LD. & TK. on T/C

P.K. and City Engineer tag to be set @ surface after street construction is complete. (If possible)

Scale: 1" = 30'

Date: 08/27/16

Drawn by: pw

F.B.:

TR-Sec: T3SR4W-4

OFFICIAL TIE PLAT
CITY OF RIVERSIDE

These ties are for the purpose of perpetuating the found monumentation. No claim is made as to the relationship of the points or lines shown hereon to true boundary locations.

Sheet 1 of 1
Cadme MB: 58-5