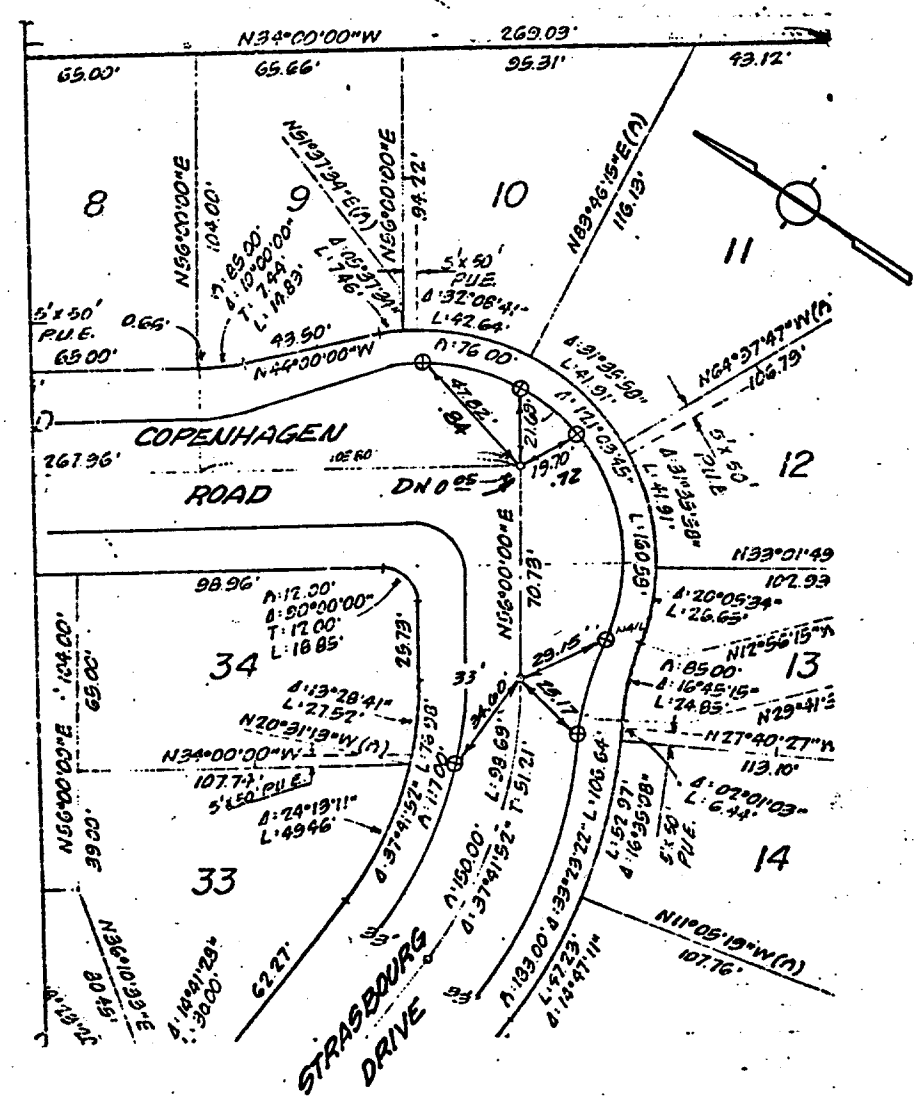


1527.T1F

Street: COPENHAGEN RD X-Street: STRASBOURG DR.
 OFFICIAL USE ONLY



- ⊙ Indicates Riverside County Standard No. 903 Type "B" Monument (1/2" Brass Cap Stamped R.C.E. 862).
- ⊙ Indicates Riverside County Standard No. 902 Type "A" Monument (1/4" Iron Pipe Tagged R.C.E. 862).
- ⊙ Indicates Set Nail & Tagged R.C.E. 862 in Curb.
- Indicates Set Nail in Curb.

DAVIDSON ASSOCIATES
 1426 TENTH STREET
 VERSIDE, CALIFORNIA

MONUMENT TIES
 FOR TRACT 7675-1

SHEET NO. 3 OF 6
 DATE SEPT. 1977
 SCALE 1" = 50'

- ⊗ FD. Ramset Nail on T/C
- FD. "C" Nail on T/C
- FD. LD. & TK. on T/C
- Set LD. & TK. on T/C

Scale:
 Date:
 Drawn by:
 W.O.:
 F.B.:

OFFICIAL TIE PLAT
CITY OF RIVERSIDE
 These ties are for the purpose of perpetuating the found
 monumentation. No claim is made as to the relationship of
 the points or lines shown hereon to true boundary locations.

Sheet 1 of 1
 File No.: