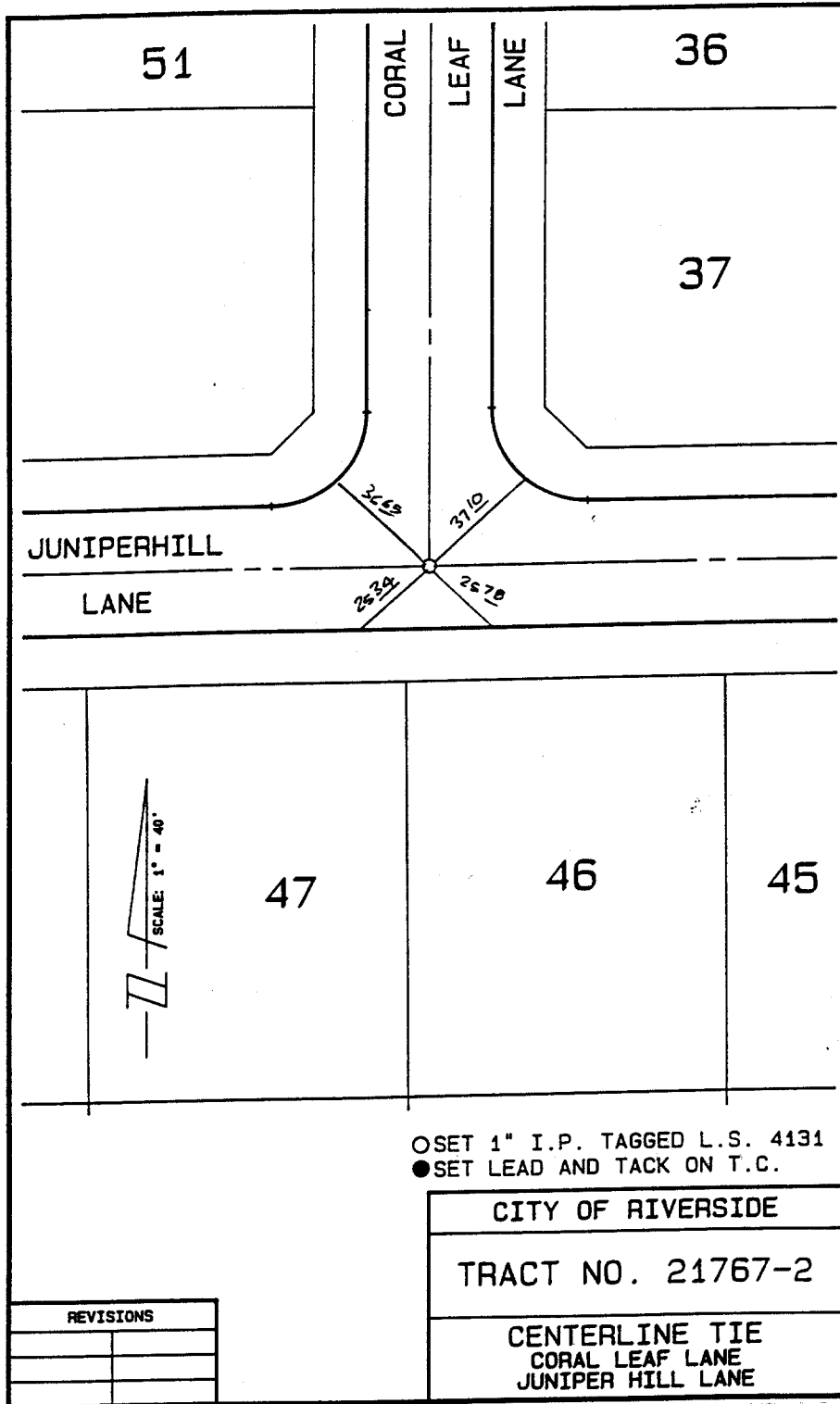


1546.TIF

CORAL LEAF LN at
JUNIPER HILL LN.



○ SET 1" I.P. TAGGED L.S. 4131
● SET LEAD AND TACK ON T.C.

CITY OF RIVERSIDE
TRACT NO. 21767-2
CENTERLINE TIE CORAL LEAF LANE JUNIPER HILL LANE

REVISIONS	

- ✕ FD. Ramset Nail on T/C
- FD. LD. & TK. on T/C
- FD. "C" Nail on T/C
- Set LD. & TK. on T/C

Street: CORAL LEAF LN

X-Street: JUNIPER HILL LN.

OFFICIAL USE ONLY

Scale:

Date:

Drawn by:

W.O.:

F.B.:

OFFICIAL TIE PLAT
CITY OF RIVERSIDE

*These ties are for the purpose of perpetuating the found
monumentation. No claim is made as to the relationship of
the points or lines shown hereon to true boundary locations.*

Sheet 1 of 1

File No.: