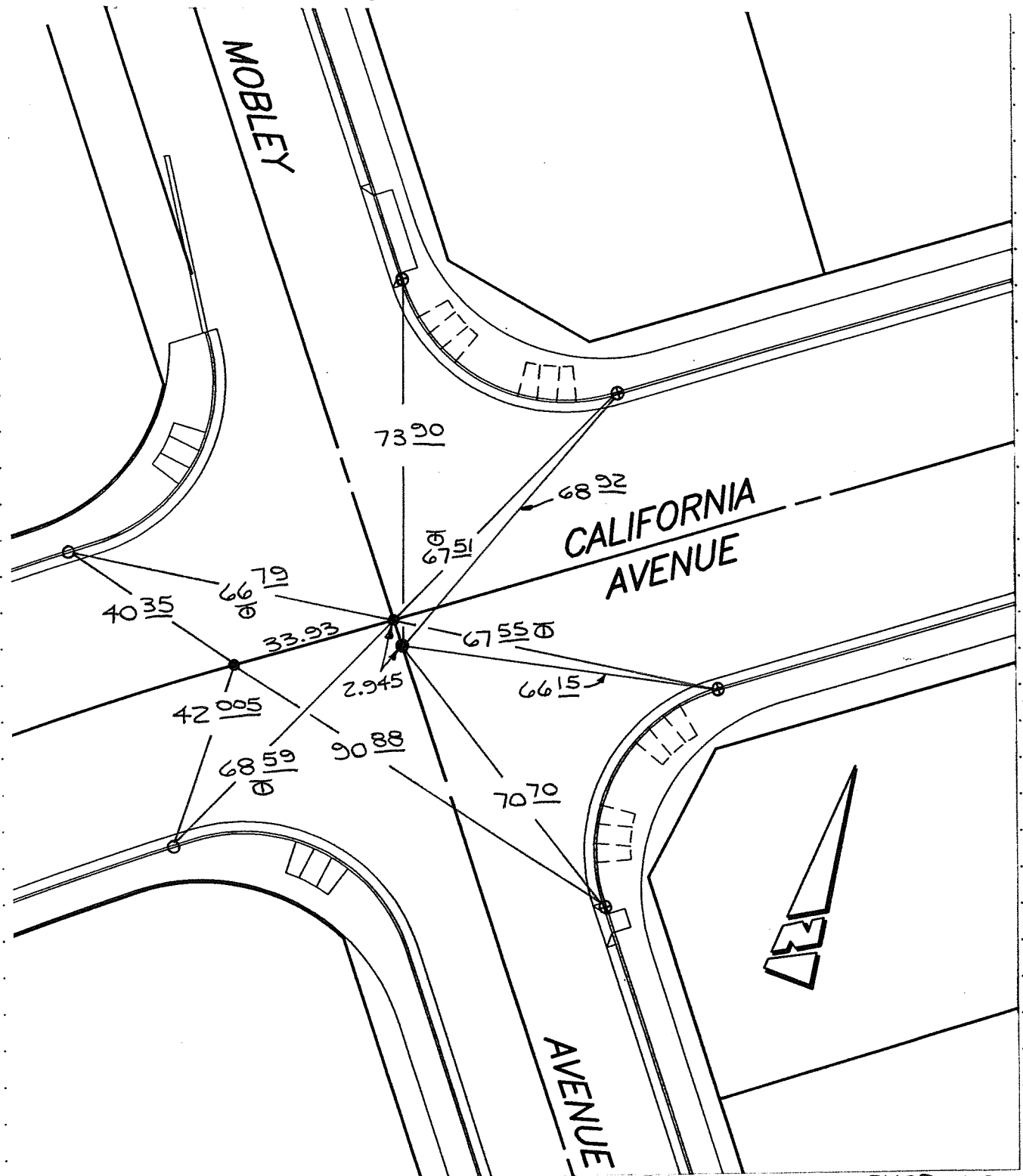


TRANSIT & SWING TIES

STREET CALIFORNIA AVE. X-STREET MOBLEY AVE. OFFICE USE ONLY 1718.TIF

1718.TIF



- ⊗ FD. Ramset Nail on T/C
- FD. "C" Nail on T/C

- SET P.K. NAIL + CITY ENGR. TAG
- FD. LD. & TK. on T/C
- SET LD. & TK. On T/C

SCALE: 1" = 30'
 DATE: 3-17-97
 DR. BY: LOPEZ
 W.O.:
 F.B.:

OFFICIAL TIE PLAT
 CITY OF RIVERSIDE

These ties are for the purpose of perpetuating the found monumentation. No claim is made as to the relationship of the points or lines shown hereon to true boundary locations.

SHEET
 V 1
 OF 1 SHEETS
 FILE NO.: