

175.71F

AMY WAY

IN THE CITY OF RIVERSIDE
E TIES
TRACT NO. 10512-1

100107

FD: N & TAG
LS 3491
IN TOP OF CURB

SET CONG. NAIL
IN TOP OF CURB

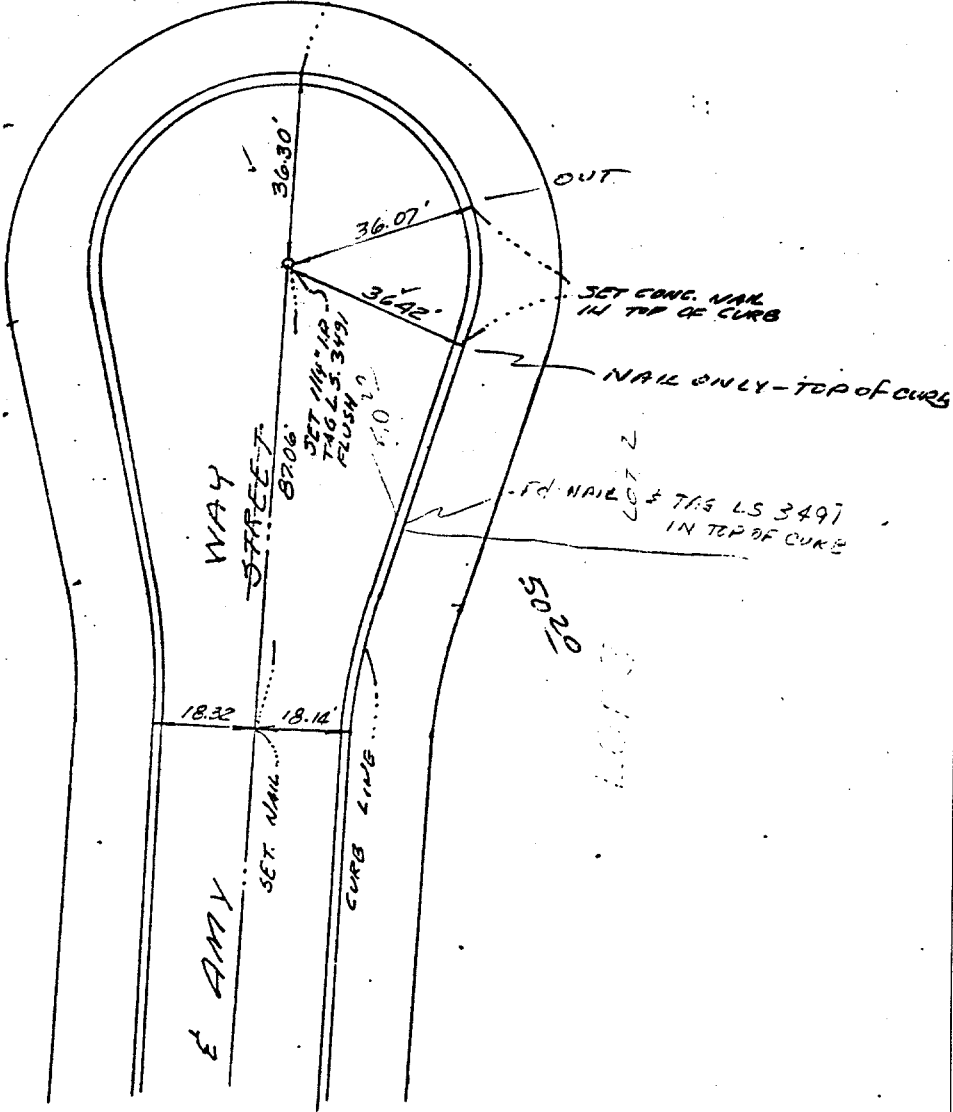
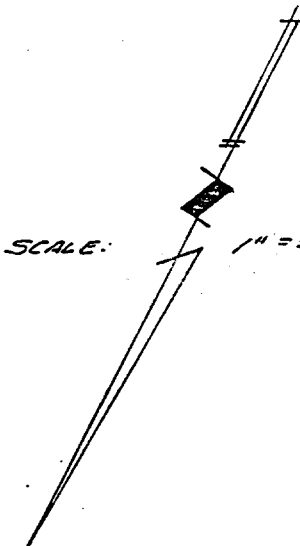
OUT

SET CONG. NAIL
IN TOP OF CURB

NAIL ONLY - TOP OF CURB

FD: NAIL LOT 2
& TAG LS 3491
IN TOP OF CURB

SCALE: 1" = 30'



Street: AMY WAY

X-Street: _____
OFFICIAL USE ONLY

- ✕ FD. Ramset Nail on T/C
- FD. "C" Nail on T/C

- FD. LD. & TK. on T/C
- Set LD. & TK. on T/C

Scale: _____
 Date: _____
 Drawn by: _____
 W.O.: _____
 F.B.: _____

OFFICIAL TIE PLAT
CITY OF RIVERSIDE

These ties are for the purpose of perpetuating the found monumentation. No claim is made as to the relationship of the points or lines shown hereon to true boundary locations.

Sheet 1 of 1
 File No.: _____