

1755.71K

Street: CANTERBURY RD

OFFICIAL USE ONLY

X-Street: GARFIELD

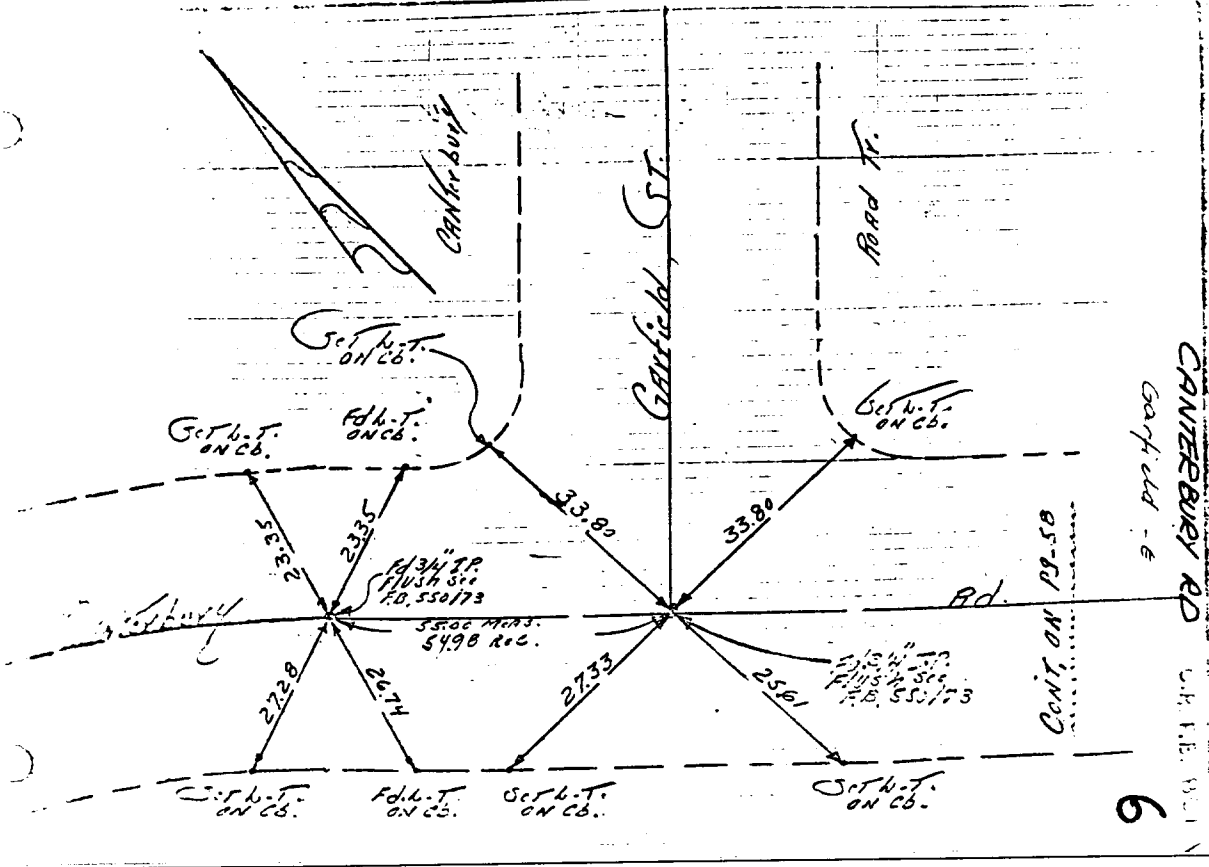
6

Mon. Ties

CANTERBURY RD.
@ GARFIELD ST.

HISTORICAL DATA CANTERBURY RD. FRACT F.B. 550/73 F.B. 851/57	Field CR-W ROWAY GRANDINETTE FVYC F.B. 851/57 6-26-68
--	--

"Note" Transit Ties



- ✕ FD. Ramset Nail on T/C
- FD. LD. & TK. on T/C
- FD. "C" Nail on T/C
- Set LD. & TK. on T/C

OFFICIAL TIE PLAT

CITY OF RIVERSIDE

These ties are for the purpose of perpetuating the found monumentation. No claim is made as to the relationship of the points or lines shown hereon to true boundary locations.

Scale:
Date:
Drawn by:
W.O.:
F.B.:

Sheet 1 of 1
File No.: