

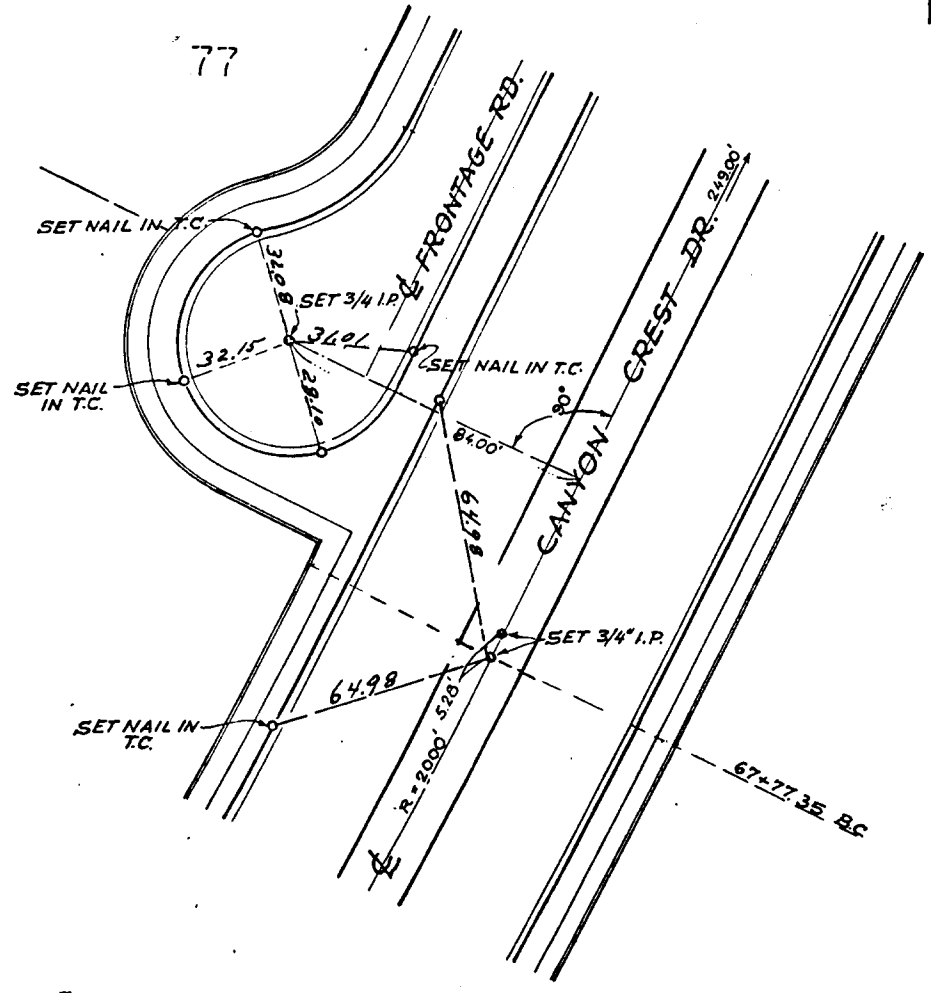
Street: CANYON CREST DR. X-Street: S'LY VIA ZAPATA

OFFICIAL USE ONLY

CANYON CREST DR  
S'LY VIA ZAPATA

23

CANYON CREST Drive  
S'LY OF VIA ZAPATA



FIELD CHECKED  
6-15-68 BY F.C.L.

Date 5-2-67

TRACT 3164  
J.F. DAVIDSON ASSOCIATES  
Civil Engineers - Surveyors

- ✕ FD. Ramset Nail on T/C
- FD. "C" Nail on T/C

- FD. LD. & TK. on T/C
- Set LD. & TK. on T/C

23

**OFFICIAL TIE PLAT**  
**CITY OF RIVERSIDE**

*These ties are for the purpose of perpetuating the found monumentation. No claim is made as to the relationship of the points or lines shown hereon to true boundary locations.*

Scale:  
Date:  
Drawn by:  
W.O.:  
F.B.:

Sheet 1 of 1  
File No.: