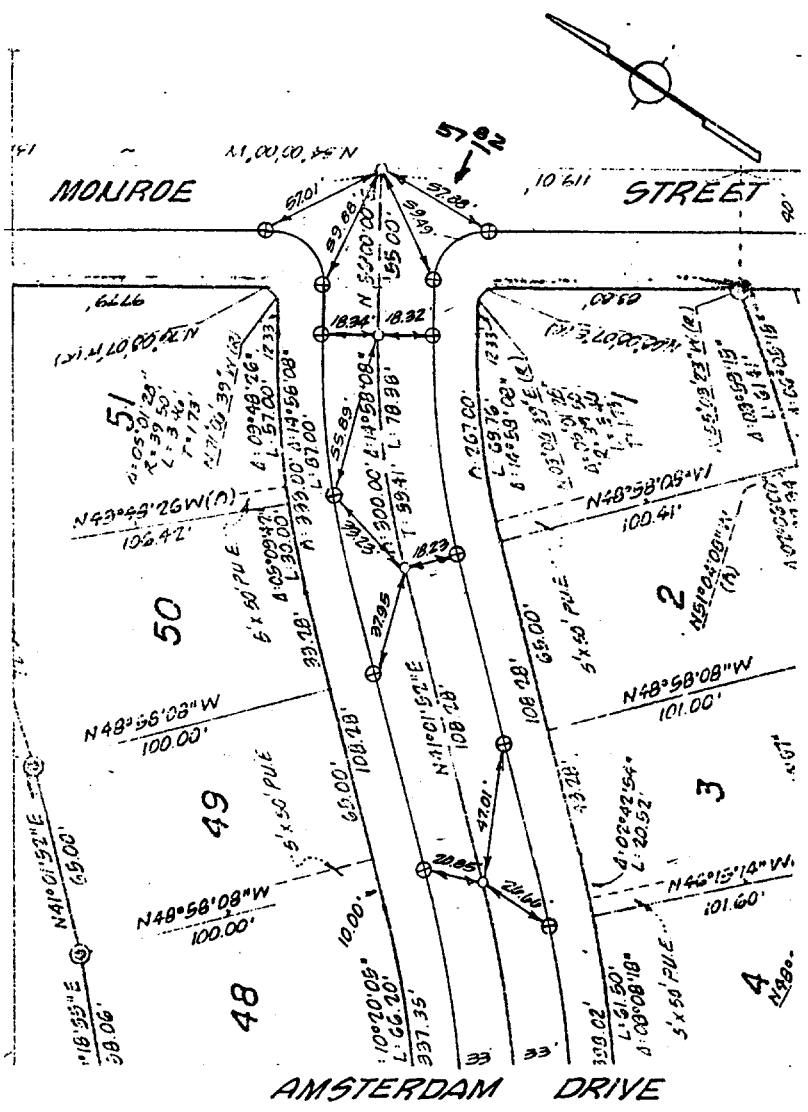


FILE 181



- ⊙ Indicates Riverside County Standard No. 903 Type "B" Monument (1/2" Brass Cap Stamped R.C.E. 862).
- ⊕ Indicates Riverside County Standard No. 902 Type "A" Monument (1/4" Iron Pipe Tagged R.C.E. 862).
- ⊙ Indicates Set Nail & Tagged R.C.E. 862 In Curb.
- ⊙ Indicates Set Nail In Curb.

OF DAVIDSON ASSOCIATES  
 5426 TENTH STREET  
 RIVERSIDE, CALIFORNIA

**MONUMENT TIES**  
 FOR TRACT 7075

SHEET NO. 1 OF 5  
 DATE SEPT. 1977  
 SCALE 1" = 50'

- ⊗ FD. Ramset Nail on T/C
- FD. LD. & TK. on T/C
- FD. "C" Nail on T/C
- Set LD. & TK. on T/C

Scale:  
 Date:  
 Drawn by:  
 W.O.:  
 F.B.:

**OFFICIAL TIE PLAT**  
 CITY OF RIVERSIDE

These ties are for the purpose of perpetuating the found monumentation. No claim is made as to the relationship of the points or lines shown hereon to true boundary locations.

Sheet 1 of 1  
 File No.:

Street: AMSTERDAM DR  
 X-Street: MONROE ST  
 OFFICIAL USE ONLY