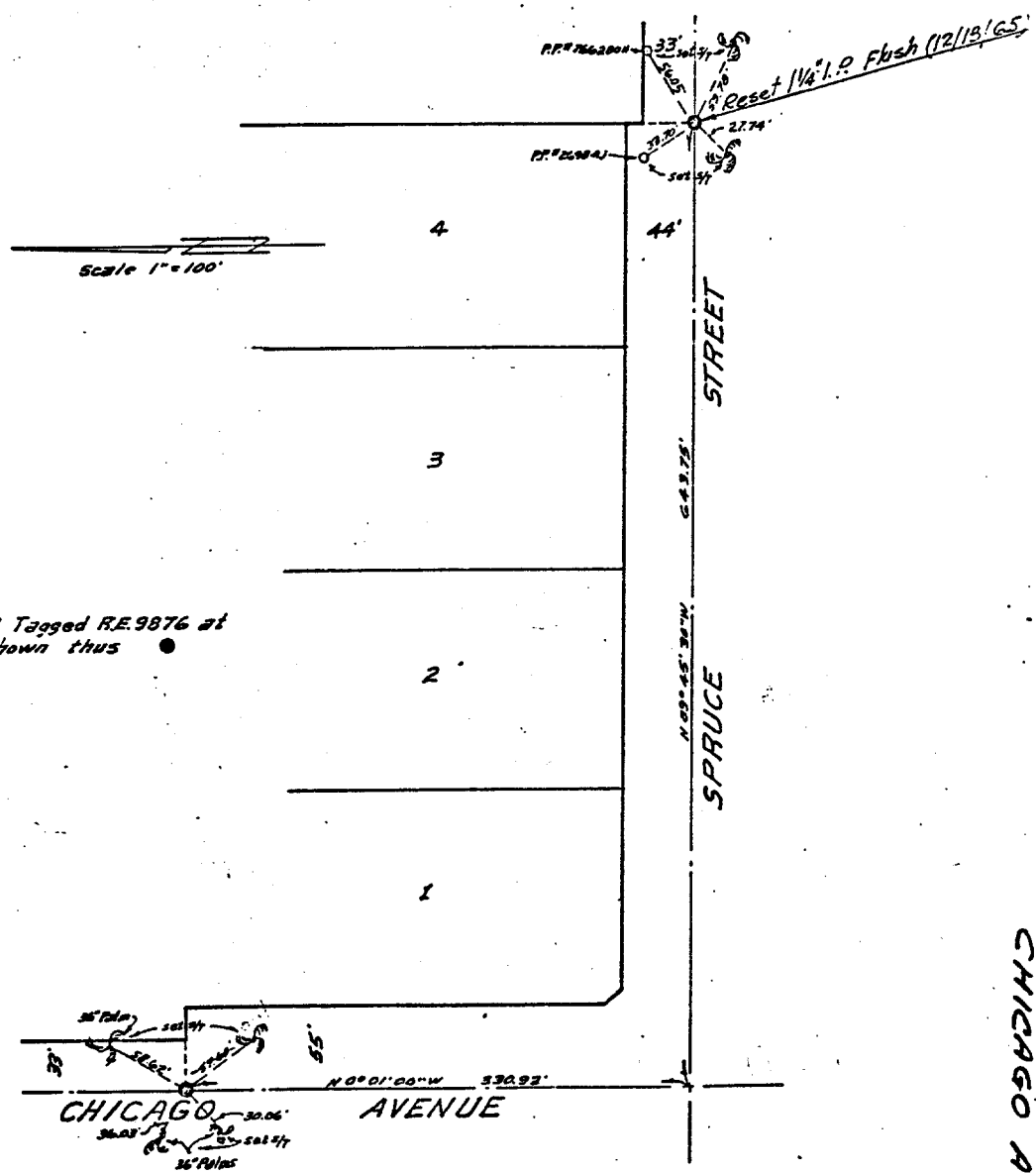


1986. T1K

TRACT 3238

Being a subdivision of a portion of Lot 14 of the Wilbur Tract as recorded in Book 4 of Maps, at page 36, San Bernardino County records. In S.W. 1/4, Section 18, T.25., R.4W, San Bernardino Base & Meridian.



Set 3/4" I.P. Tagged R.E. 9876 at all points shown thus

ALBERT A. WEBB ASSOCIATES

FIELD CHECKED 8-29-66 W.L.C.

Drawn by REI

CHICAGO AVE

SPRUCE STREET

Street: CHICAGO AVE X-Street: SPRUCE OFFICIAL USE ONLY 25

- ✕ FD. Ramset Nail on T/C
- FD. LD. & TK. on T/C
- FD. "C" Nail on T/C
- Set LD. & TK. on T/C

Scale:
Date:
Drawn by:
W.O.:
F.B.:

OFFICIAL TIE PLAT
CITY OF RIVERSIDE

These ties are for the purpose of perpetuating the found monumentation. No claim is made as to the relationship of the points or lines shown hereon to true boundary locations.

Sheet 1 of 1
File No.: