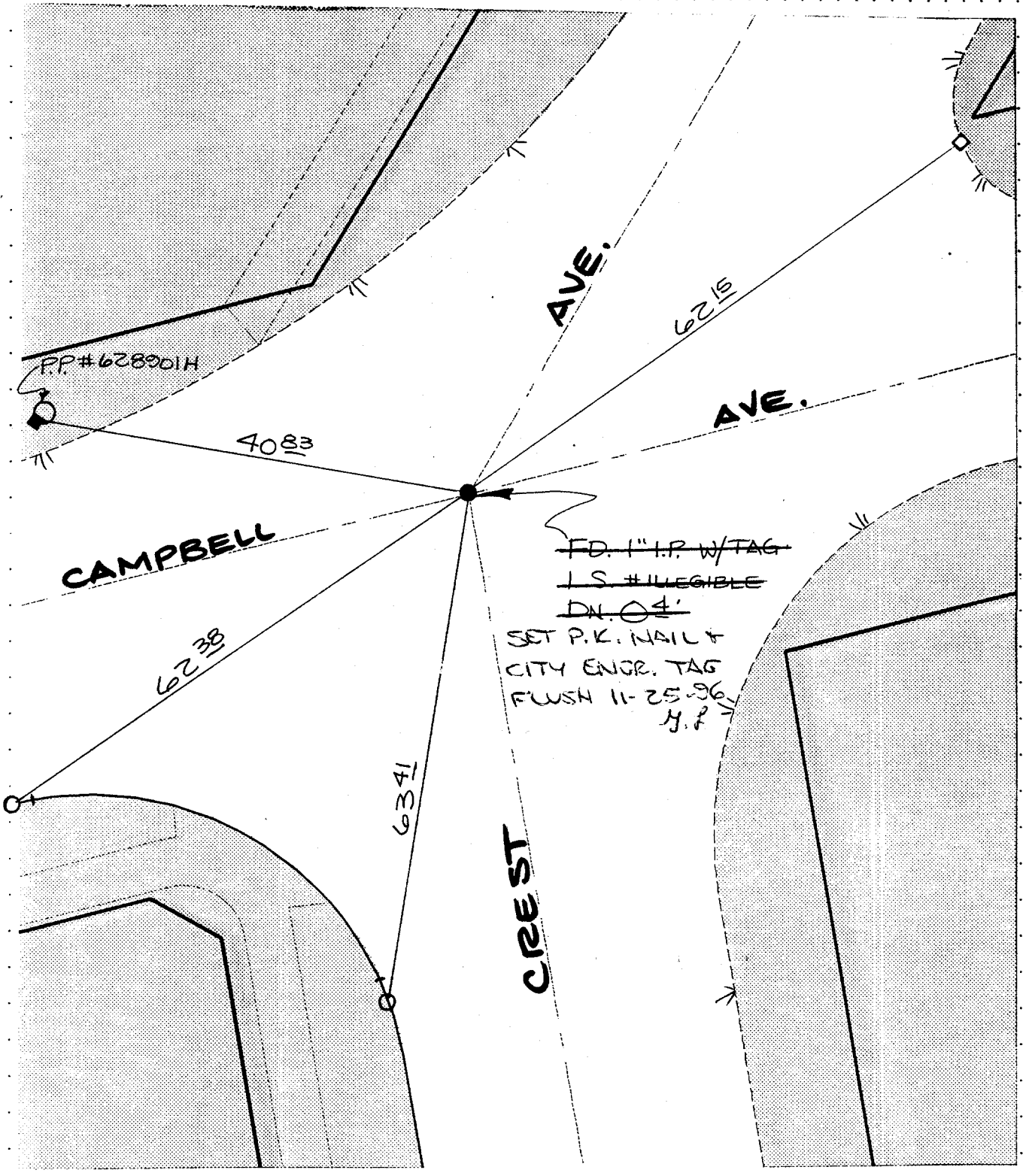


23A

STREET CREST AVENUE X-STREET CAMPBELL AVENUE

OFFICE USE ONLY



- ✕ FD. Ramset Nail on T/C
- FD. LD. & TK. on T/C
- FD. "C" Nail on T/C
- SET LD. & TK. On T/C (APPROX 12' FROM BCR/ECR)
- ◇ SET NAIL & TIN
- ◆ FD. NAIL & TIN

SCALE: N/A
 DATE: 6/12/96
 DR. BY: [Signature]
 W.O.:
 F.B.:

OFFICIAL TIE PLAT
 CITY OF RIVERSIDE

These ties are for the purpose of perpetuating the found monumentation. No claim is made as to the relationship of the points or lines shown hereon to true boundary locations.

SHEET
 OF SHEETS
 FILE NO.: