

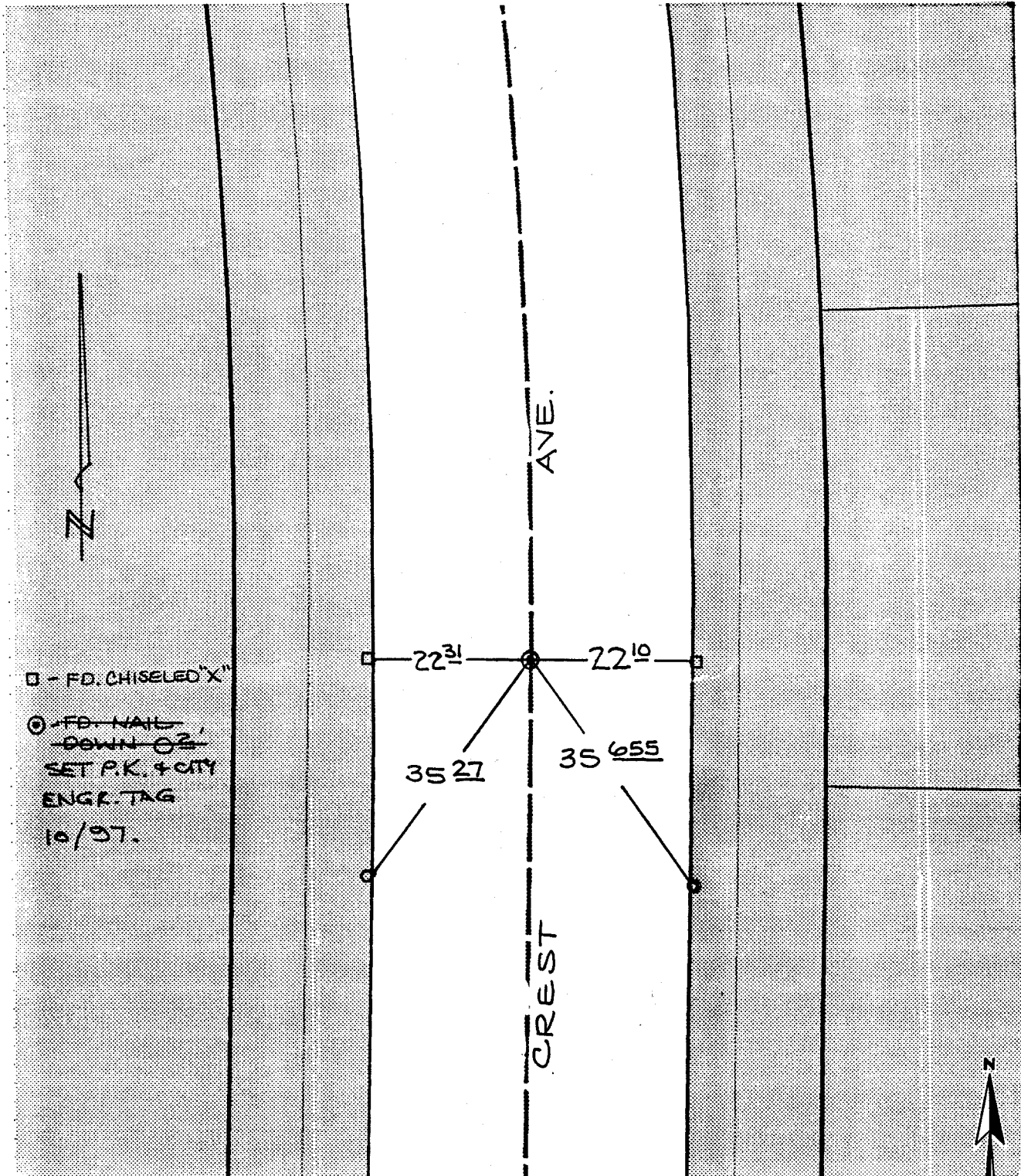
17A

X-STREET B.C. N'LY OF JOB WAY

OFFICE USE ONLY

CREST AVE.

STREET



□ - FD. CHISELED "X"
 ● - FD. LD. & TK. on T/C
 ○ - FD. "C" NAIL on T/C
 SET P.K. & CITY ENGR. TAG 10/97.

× FD. Ramset Nail on T/C
 ■ FD. "C" Nail on T/C

● FD. LD. & TK. on T/C
 ○ SET LD. & TK. On T/C

SCALE: 1" = 20'

DATE: 9/27

DR. BY: VT

W.O.:

F.B.:

OFFICIAL TIE PLAT
CITY OF RIVERSIDE

These ties are for the purpose of perpetuating the found monumentation. No claim is made as to the relationship of the points or lines shown hereon to true boundary locations.

SHEET 1

OF 1 SHEETS

FILE NO.: