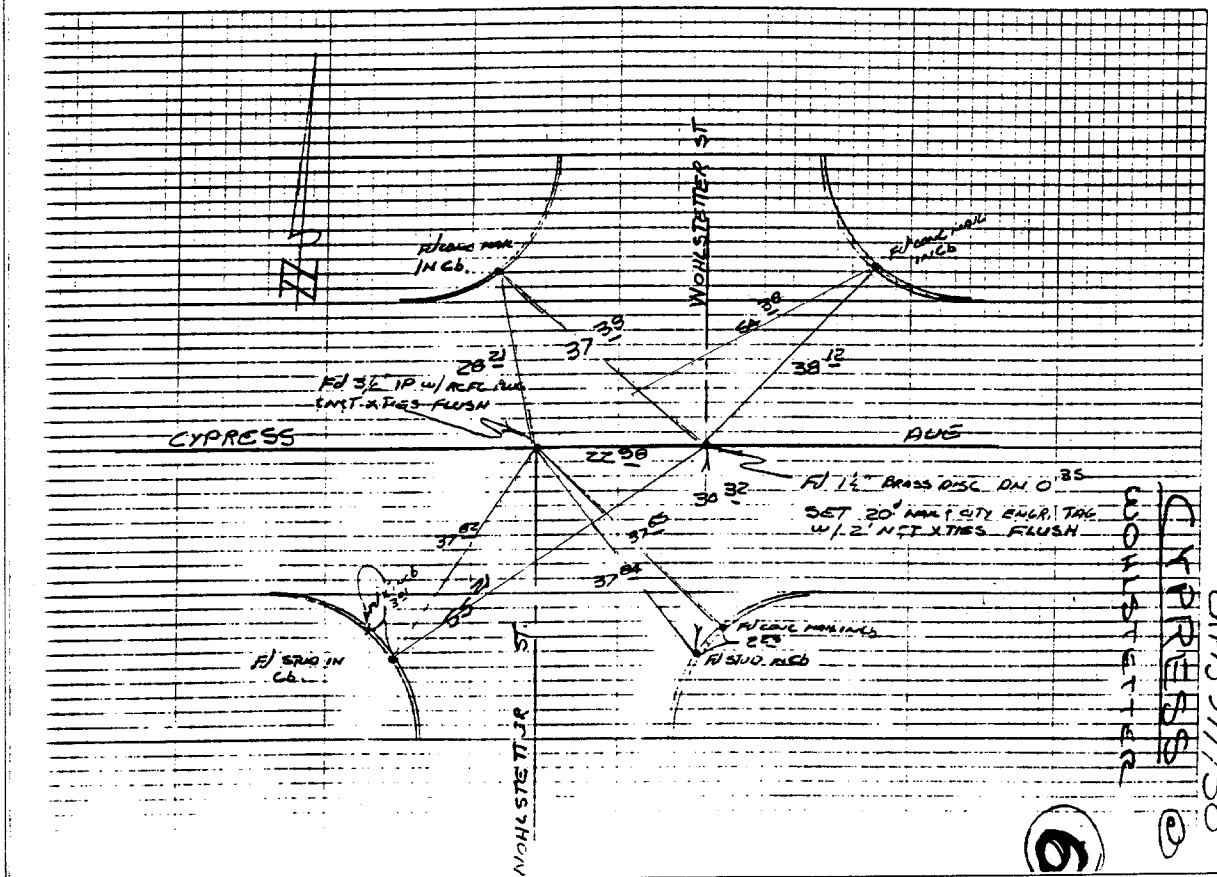


2150.71F

Street: CYPRESS
 X-Street: WOHLSTETTER
 OFFICIAL USE ONLY

HISTORICAL DATA	SWING TIES	CYPRESS ST @ WOHLSTETTER ST
REFLECTED TIES	FB 977/50	DATE MARCH 18 1976
LIGHT COPT TIES		CRAW
FB 660/53		THORP
		MONTAGUE
		ALLEN



- ✕ FD. Ramset Nail on T/C
- FD. LD. & TK. on T/C
- FD. "C" Nail on T/C
- Set LD. & TK. on T/C

OFFICIAL TIE PLAT

CITY OF RIVERSIDE

These ties are for the purpose of perpetuating the found monumentation. No claim is made as to the relationship of the points or lines shown hereon to true boundary locations.

Scale:
 Date:
 Drawn by:
 W.O.:
 F.B.:

Sheet 1 of 1
 File No.: