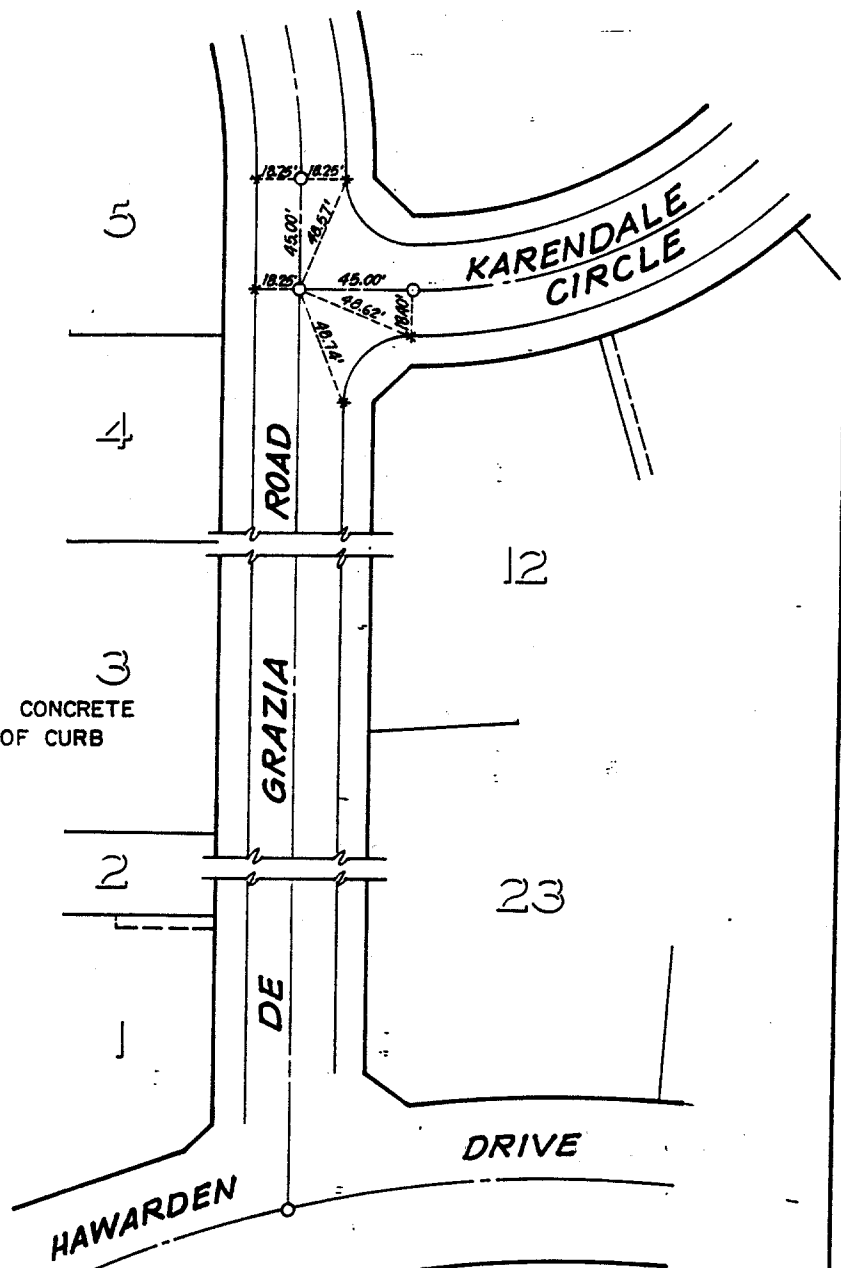


2241. TIF

TRACT NO. 10005-1

DE GRAZIA RD @ KARENDALE CIRCLE  
(3/2/87)



\* INDICATES SET CONCRETE NAIL IN TOP OF CURB

 **HAWKINS, ROBERTSON & ASSOC.**  
ENGINEERS & SURVEYORS  
RIVERSIDE, CALIF. 92506 3764 ELIZABETH STREET PH. 684-9822

DRWN BY: A.V.C. DATE: 4/2/87  
W.O. 3618 SCALE: NONE

- ✕ FD. Ramset Nail on T/C
- FD. LD. & TK. on T/C
- FD. "C" Nail on T/C
- Set LD. & TK. on T/C

Street: DE GRAZIA RD  
X-Street: KARENDALE CIRCLE  
OFFICIAL USE ONLY

Scale:  
Date:  
Drawn by:  
W.O.:  
F.B.:

### OFFICIAL TIE PLAT CITY OF RIVERSIDE

*These ties are for the purpose of perpetuating the found monumentation. No claim is made as to the relationship of the points or lines shown hereon to true boundary locations.*

Sheet 1 of 1  
File No.: