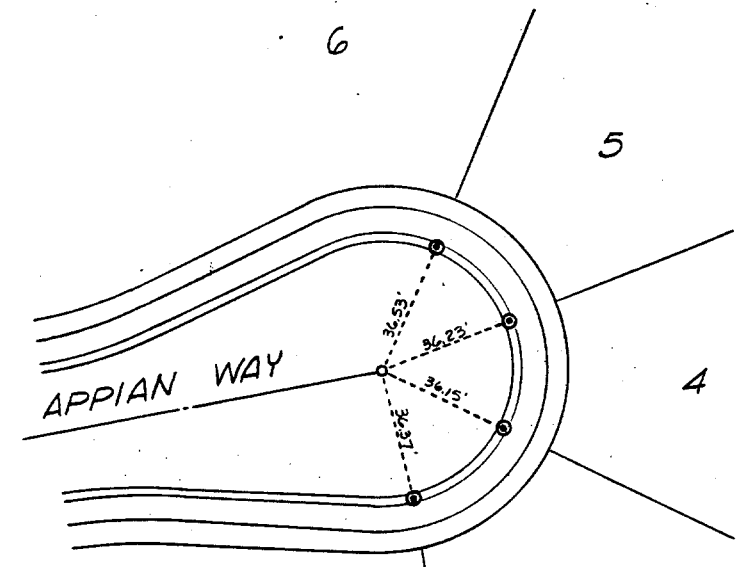


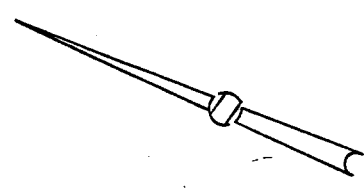
227.TIF

Street: APPIAN WAY

X-Street: \_\_\_\_\_  
OFFICIAL USE ONLY



- Set Nail in Curb.
- ⊙ Set Nail and Tag, R.C.E. 16050 in Curb.
- Set 1 1/4" O.D. Iron Pipe, Tagged R.C.E. 16050, Flush.



FIELD CKD  
12-8-82  
J.W.S.

APPIAN WAY

W.O. 021.40 Sheet 3 of 3 Sheets

**L A WAINSCOTT & ASSOCIATES**  
CIVIL ENGINEERS  
GRAND TERRACE, CALIFORNIA  
(714) 824-1775

CITY OF RIVERSIDE  
**TRACT No. 10772**

- FD. Ramset Nail on T/C
- FD. LD. & TK. on T/C
- FD. "C" Nail on T/C
- Set LD. & TK. on T/C

Scale:  
Date:  
Drawn by:  
W.O.:  
F.B.:

**OFFICIAL TIE PLAT**  
CITY OF RIVERSIDE

*These ties are for the purpose of perpetuating the found monumentation. No claim is made as to the relationship of the points or lines shown hereon to true boundary locations.*

Sheet 1 of 1  
File No.: