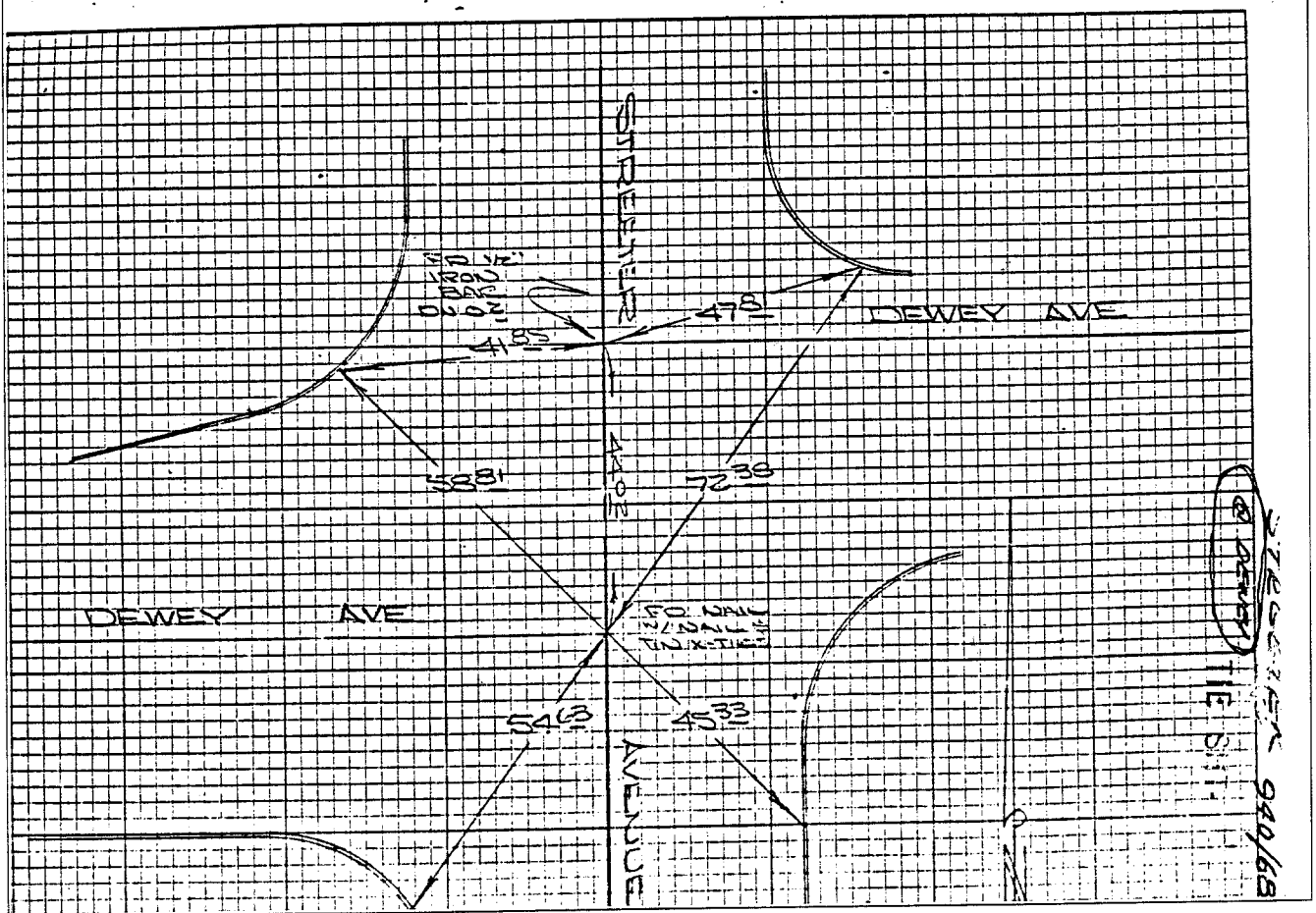


Street: DEWEY AVE

X-Street: STREETER AVE

OFFICIAL USE ONLY

STREETER AVE AT DEWEY AVE		
HISTORICAL DATA	TRANSITS & SWING TIES	CREW:
FB 333/5		STEELE
FB 360/51		FRYC
		RUSSELL
		MARCH, 1972
		FB 920/68



- ✕ FD. Ramset Nail on T/C
- FD. LD. & TK. on T/C
- FD. "C" Nail on T/C
- Set LD. & TK. on T/C

Scale:  
Date:  
Drawn by:  
W.O.:  
F.B.:

## OFFICIAL TIE PLAT

### CITY OF RIVERSIDE

*These ties are for the purpose of perpetuating the found monumentation. No claim is made as to the relationship of the points or lines shown hereon to true boundary locations.*

Sheet 1 of 1  
File No.: