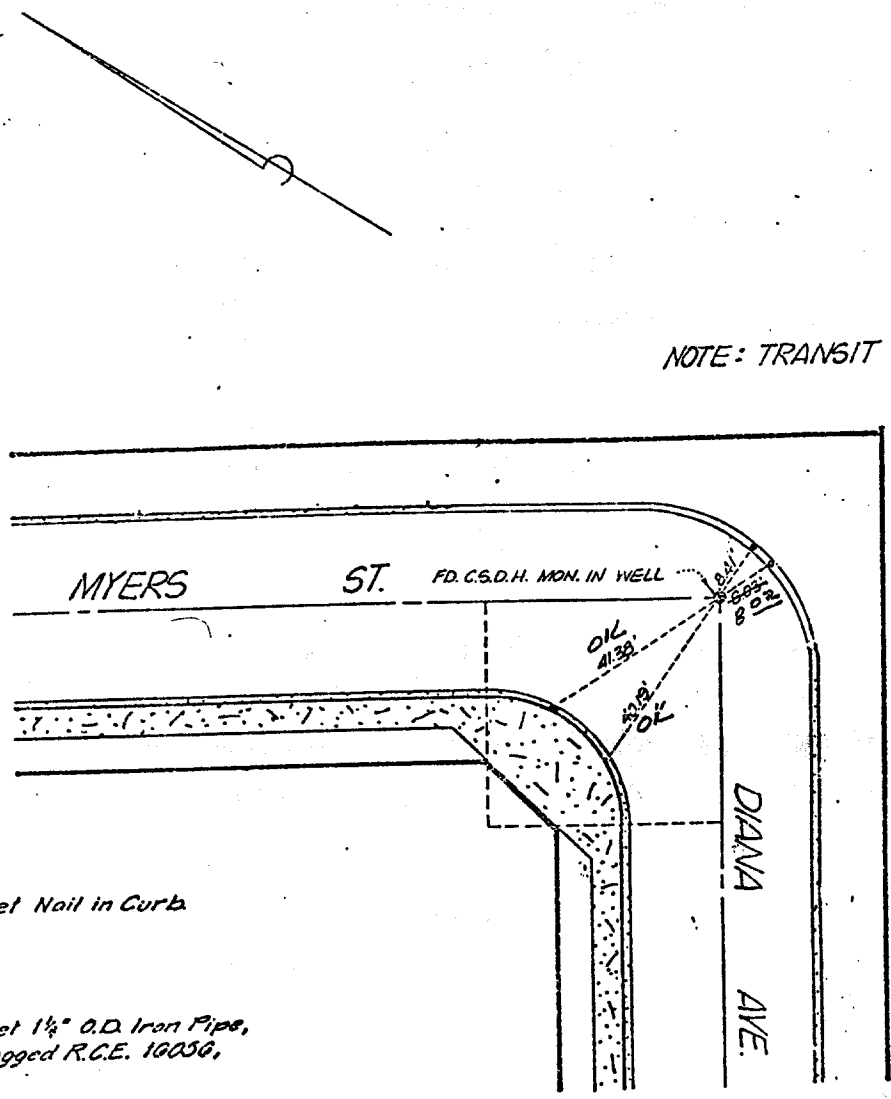


Street: DIANA AVE

OFFICIAL USE ONLY

X-Street: MYERS ST.

DIANA AVE
@ Myers St



NOTE: TRANSIT TIES

- Set Nail in Curb
- Set 1 1/2" O.D. Iron Pipe, Tagged R.C.E. 10056,

FIELD CR:
E. Garcia - 2/7/80

W.O. _____ Sheet 2 of 4 Sheets

L A WAINSCOTT & ASSOCIATES
 CIVIL ENGINEERS
 GRAND TERRACE, CALIFORNIA
 (714) 324-1775

CITY OF RIVERSIDE
 TRACT No. 8/21

- ✕ FD. Ramset Nail on T/C
- FD. LD. & TK. on T/C
- FD. "C" Nail on T/C
- Set LD. & TK. on T/C

Scale:
 Date:
 Drawn by:
 W.O.:
 F.B.:

OFFICIAL TIE PLAT

CITY OF RIVERSIDE

These ties are for the purpose of perpetuating the found monumentation. No claim is made as to the relationship of the points or lines shown hereon to true boundary locations.

Sheet 1 of 1
 File No.: