

Street: **ALESSANDRO**

X-Street: **Ely** (30)

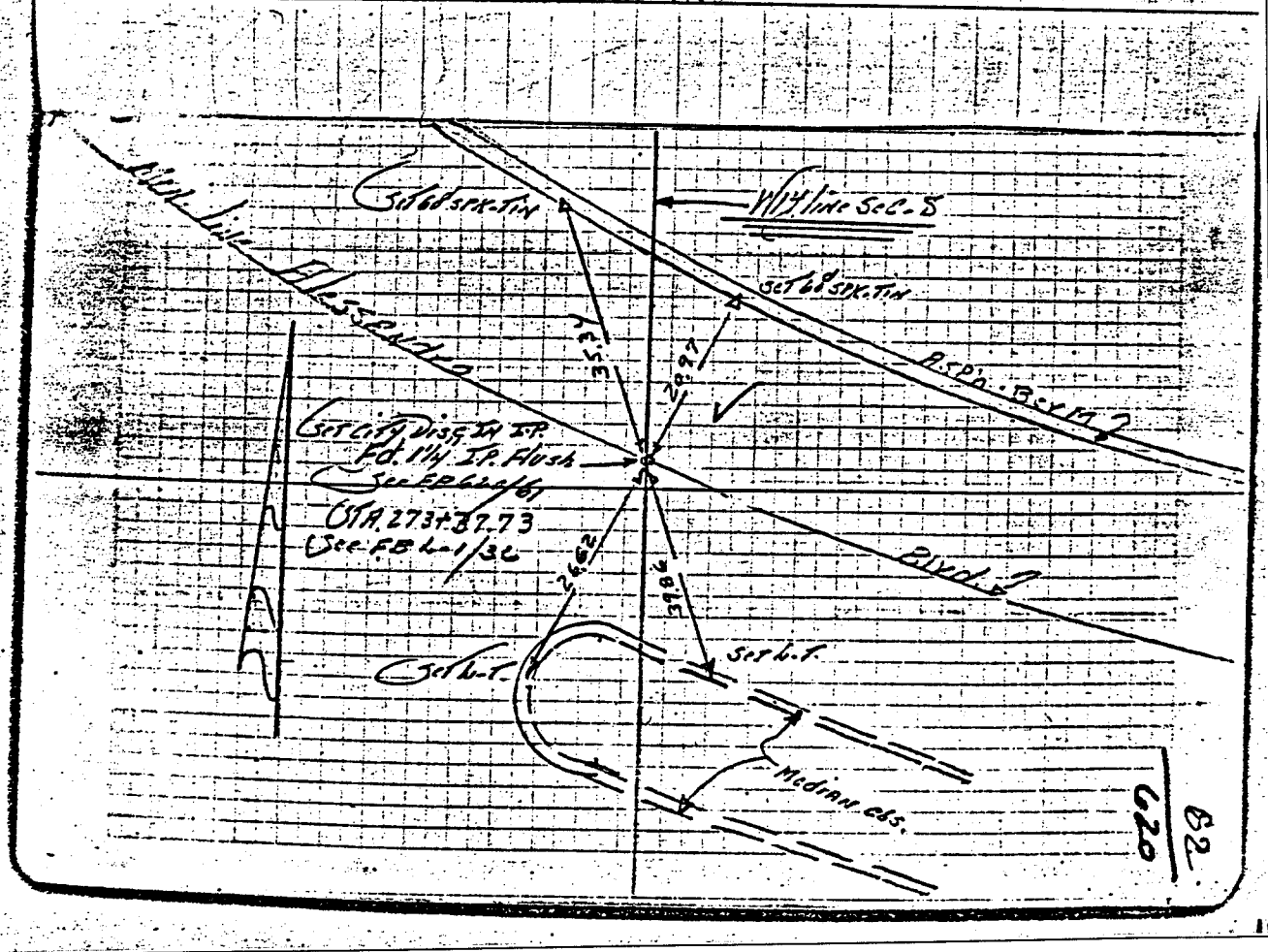
OFFICIAL USE ONLY **City of Transwain Rd**

(38)

Alessandro Blvd.
@ ~~W~~ line of Sec. 7
Ely (30)

Historical DATA	"NOTE" MON. POINT FOUND Fd. 114" IR Flush @ Int. PT. of Alessandro Blvd & W. line of Section 7 See F.B. 62/61	Field Party North Thom P. 11-13-67 F.B. 62/62
	"NOTE" SET CITY DISC, IN TP.	

TRANSIT TIES



- ✕ FD. Ramset Nail on T/C
- FD. LD. & TK. on T/C
- FD. "C" Nail on T/C
- Set LD. & TK. on T/C

Scale:
Date:
Drawn by:
W.O.:
F.B.:

OFFICIAL TIE PLAT
CITY OF RIVERSIDE

These ties are for the purpose of perpetuating the found monumentation. No claim is made as to the relationship of the points or lines shown hereon to true boundary locations.

Sheet 1 of 1
File No.: