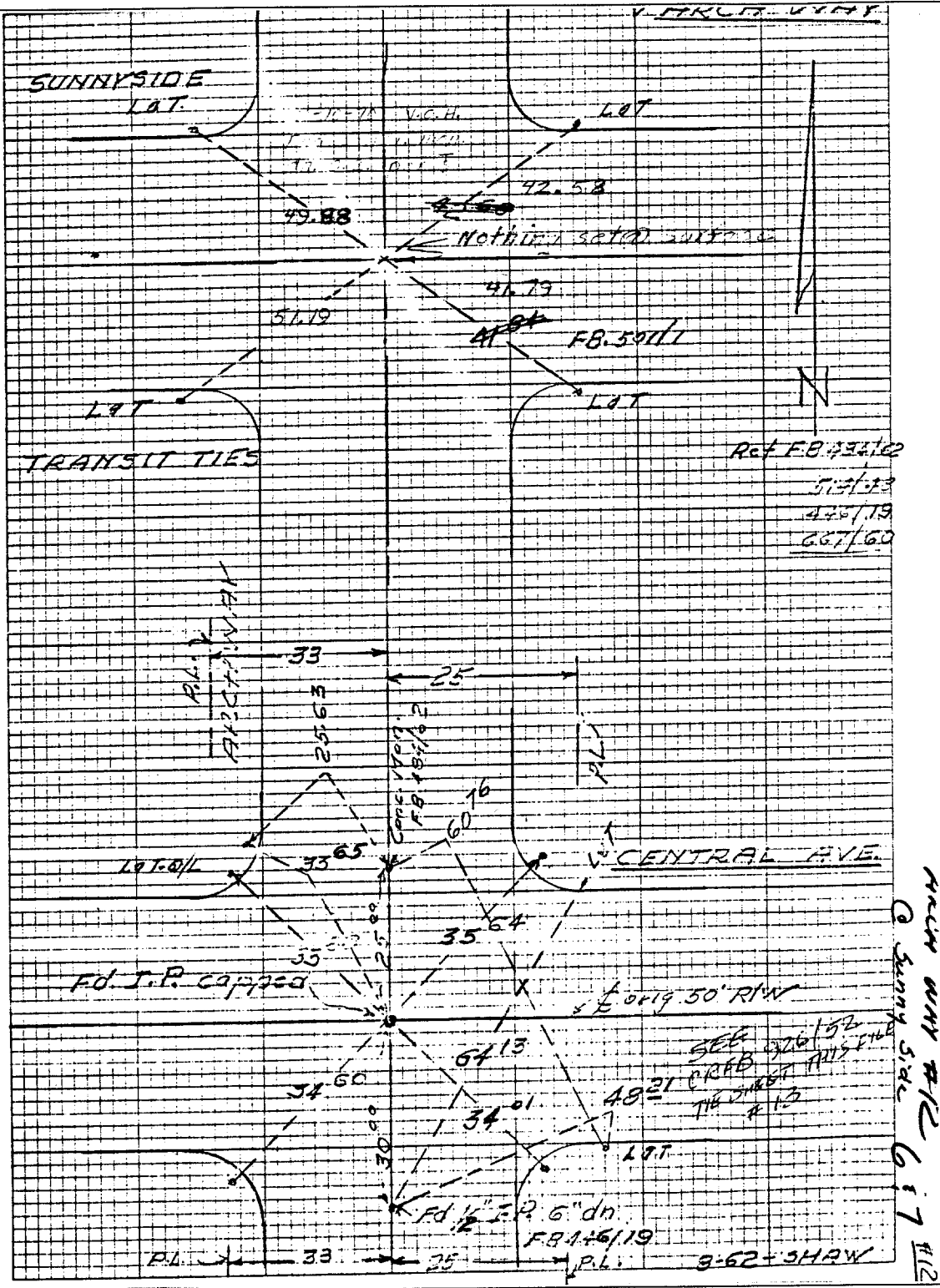


Street: **ARCHWAY**

X-Street: **SUNNYSIDE**

12 (617)

OFFICIAL USE ONLY



- ✕ FD. Ramset Nail on T/C
- FD. "C" Nail on T/C

- FD. LD. & TK. on T/C
- Set LD. & TK. on T/C

OFFICIAL TIE PLAT
CITY OF RIVERSIDE

These ties are for the purpose of perpetuating the found monumentation. No claim is made as to the relationship of the points or lines shown hereon to true boundary locations.

Scale:
Date:
Drawn by:
W.O.:
F.B.:

Sheet 1 of 1
File No.:

CITY OF RIVERSIDE

NO. 25180 - 10 DIVISIONS PER INCH BOTH VYAS 20 X 100 DIVISIONS

CITY OF RIVERSIDE

PRINTED IN U.S.A. ON CITY OF RIVERSIDE TECHNICAL PAPER NO. 101