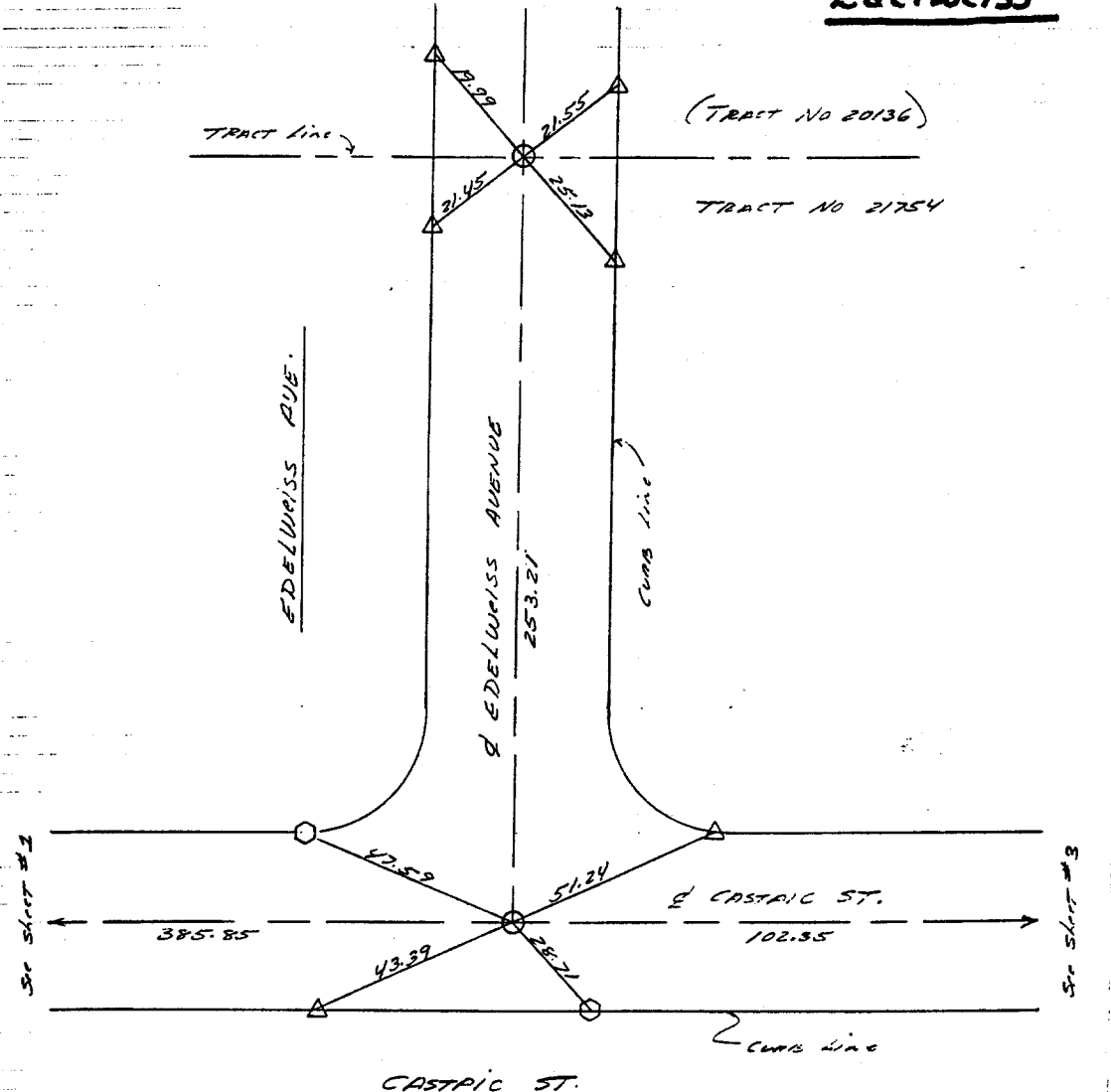
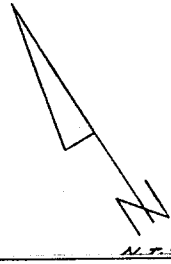


SURVEY OF TRACT No 21754 INDEX STREET TIES PAGE 2 OF 5
 SURVEYED BY colbush - Politsky DATE 12-21-88 ORANGE COUNTY SURVEYOR

Edelweiss



- SET 1" I.P. IS VISI (PLUG)
- △ SET 1/2" ON T.C. TANGENT/OVER TIE
- SET 1/2" ON T.C. NON-TANGENT/OVER TIE



- ✕ FD. Ramset Nail on T/C
- FD. LD. & TK. on T/C
- FD. "C" Nail on T/C
- Set LD. & TK. on T/C

Street: **EDELWEISS**

X-Street: **CASTAIC ST.**
 OFFICIAL USE ONLY

Scale:
 Date:
 Drawn by:
 W.O.:
 F.B.:

OFFICIAL TIE PLAT
 CITY OF RIVERSIDE

These ties are for the purpose of perpetuating the found monumentation. No claim is made as to the relationship of the points or lines shown hereon to true boundary locations.

Sheet 1 of 1
 File No.: