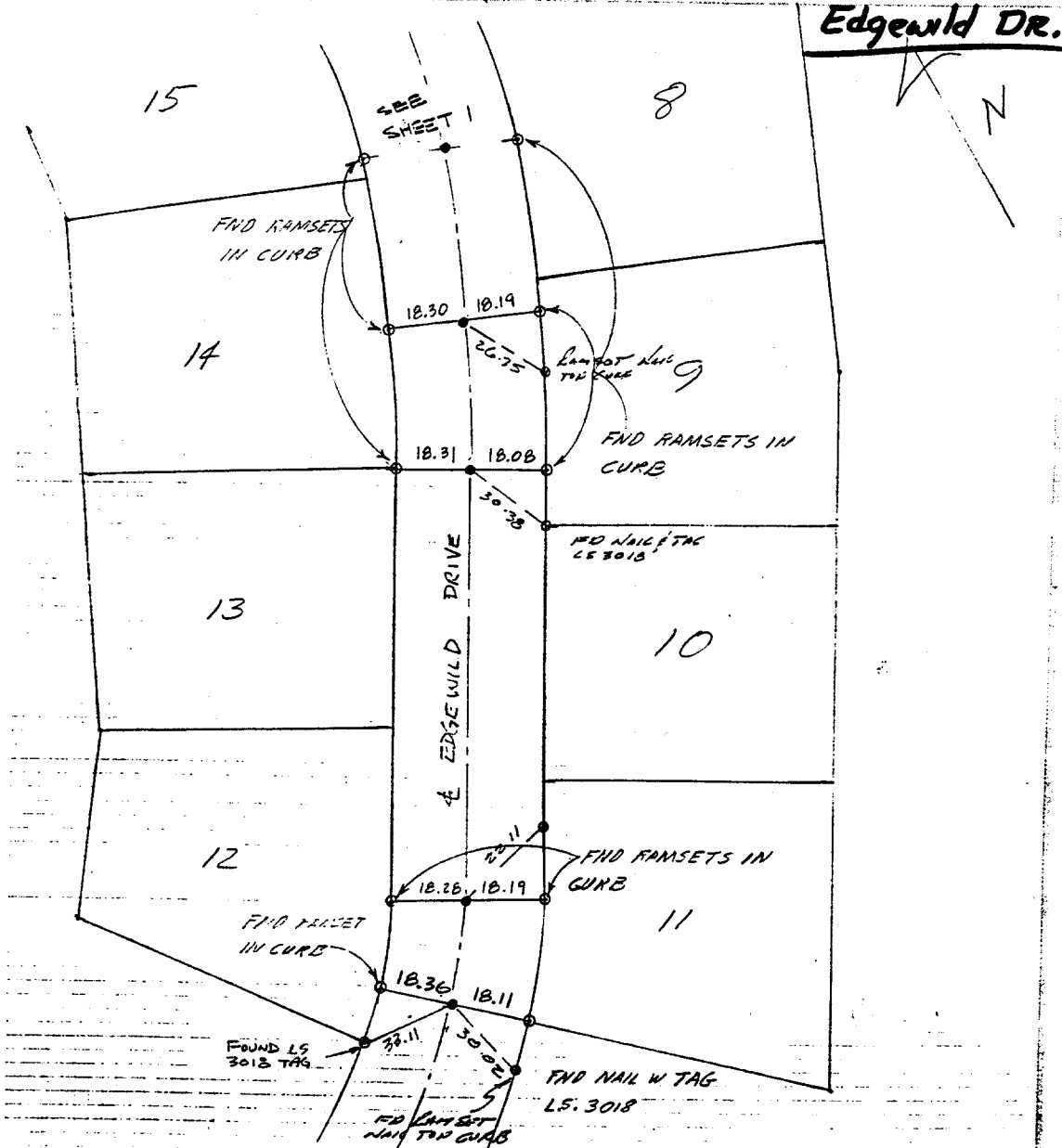


J.F. Davidson Associates, Inc.  
ENGINEERS, PLANNERS, SURVEYORS  
ARCHITECTS, LANDSCAPE ARCHITECTS

F.B. 10051/3

SURVEY OF CENTERLINE TIES TR # 21025 SHEET 2 OF 2  
FOR SCHIAVONE W.O. No. 8710051 Date: 3-24-89  
SURVEY PARTY JENNIFER, MABERRY, GONZAL REF. \_\_\_\_\_ A.M. SHEET 2 OF 2

SURVEY NOTES



- = SET. 1" IP WITH PLASTIC PLUG L.S. 3018
- = FOUND RAMSETS IN CURB

- ✕ FD. Ramset Nail on T/C
- FD. LD. & TK. on T/C
- FD. "C" Nail on T/C
- Set LD. & TK. on T/C

Street: EDGEWILD DR.  
X-Street: \_\_\_\_\_  
OFFICIAL USE ONLY

Scale: \_\_\_\_\_  
Date: \_\_\_\_\_  
Drawn by: \_\_\_\_\_  
W.O.: \_\_\_\_\_  
F.B.: \_\_\_\_\_

## OFFICIAL TIE PLAT

### CITY OF RIVERSIDE

*These ties are for the purpose of perpetuating the found monumentation. No claim is made as to the relationship of the points or lines shown hereon to true boundary locations.*

Sheet 1 of 1  
File No.: \_\_\_\_\_