

TIES FOR TRACT 8716
 MAP BOOK 130 PAGE 68

ARALIA

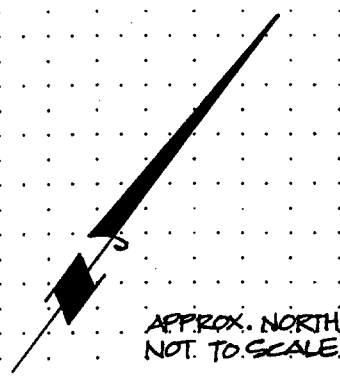
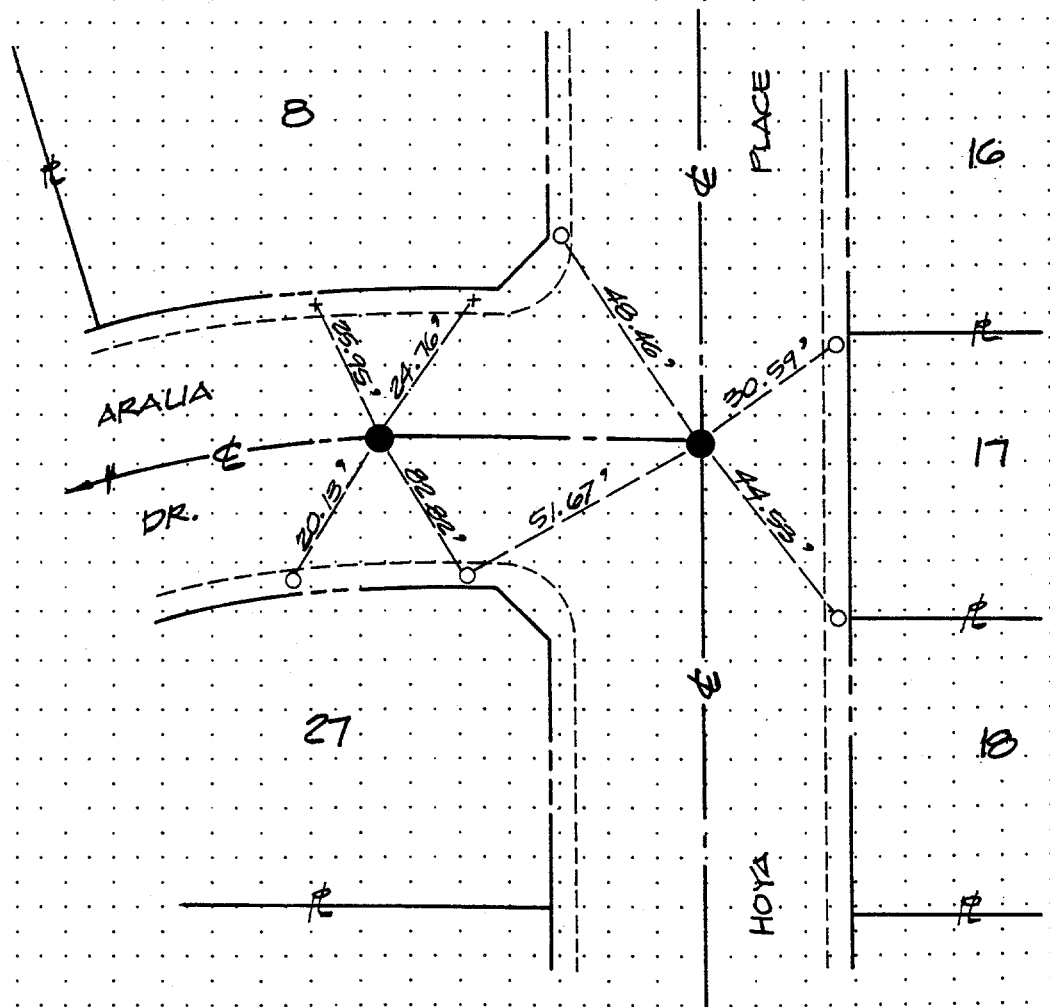
X-STREET

OFFICE USE ONLY

HOYA

STREET

277.77F



- LEGEND:
- 1" I.P. TAGGED R.C.E. 7211
 - TIE POINTS ARE LEAD AND TACK SET IN TOP OF CURB, UNLESS OTHERWISE NOTED.
 - + SET SCRIBED +. SET IN TOP OF CURB, UNLESS OTHERWISE NOTED.
 - CURB LINE
 - TIE LINE

SCALE: N.T.S.
 DATE: 7-17-98
 DR. BY: *AR*
 W.O.:
 F.B.:

OFFICIAL TIE PLAT
 CITY OF RIVERSIDE
 PREPARED BY: FORKERT ENGINEERING & SURVEYING
 HUNTINGTON BEACH, CA. 92646
 PHONE (714) 963-6793

SHEET
 OF SHEETS
 FILE NO.: