

304.17

F.B.:
W.O.:
Drawn by: scurtis
Date: 09/11/98
Scale: 1" = 20'

OFFICIAL THE PLAT CITY OF RIVERSIDE

These ties are for the purpose of perpetuating the found
monumentation. No claim is made as to the relationship of
the points or lines shown hereon to true boundary locations.

File No.:
Sheet 1 of 1

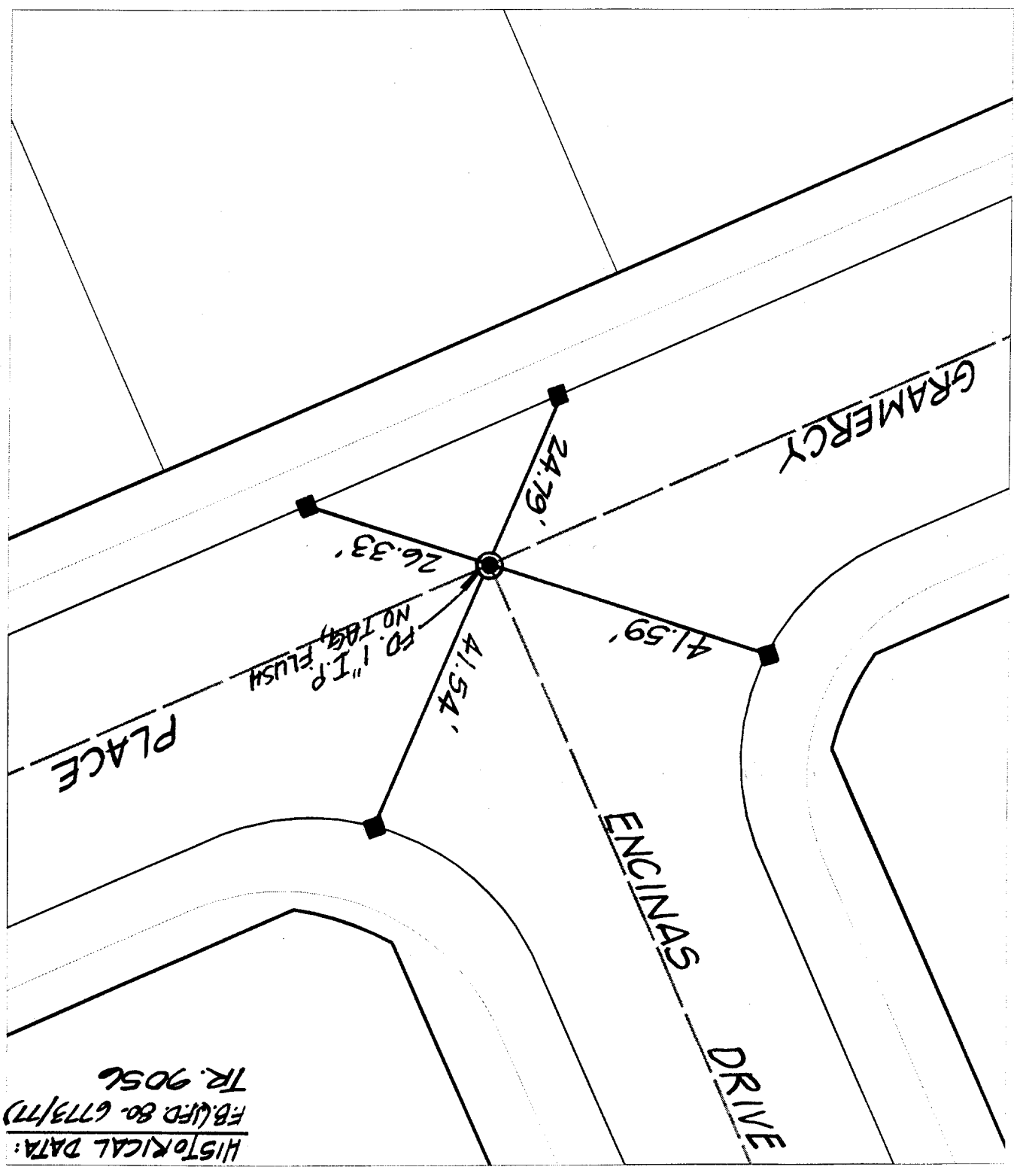


- × FD. Ramset Nail on T/C
- FD. LD. & TK. on T/C
- Set LD. & TK. on T/C

Street: GRAMERCY PLACE

X-Street: ENCINAS DRIVE

OFFICIAL USE ONLY



HISTORICAL DATA:
FB. (FD. 80. 6773/77)
TR. 9056