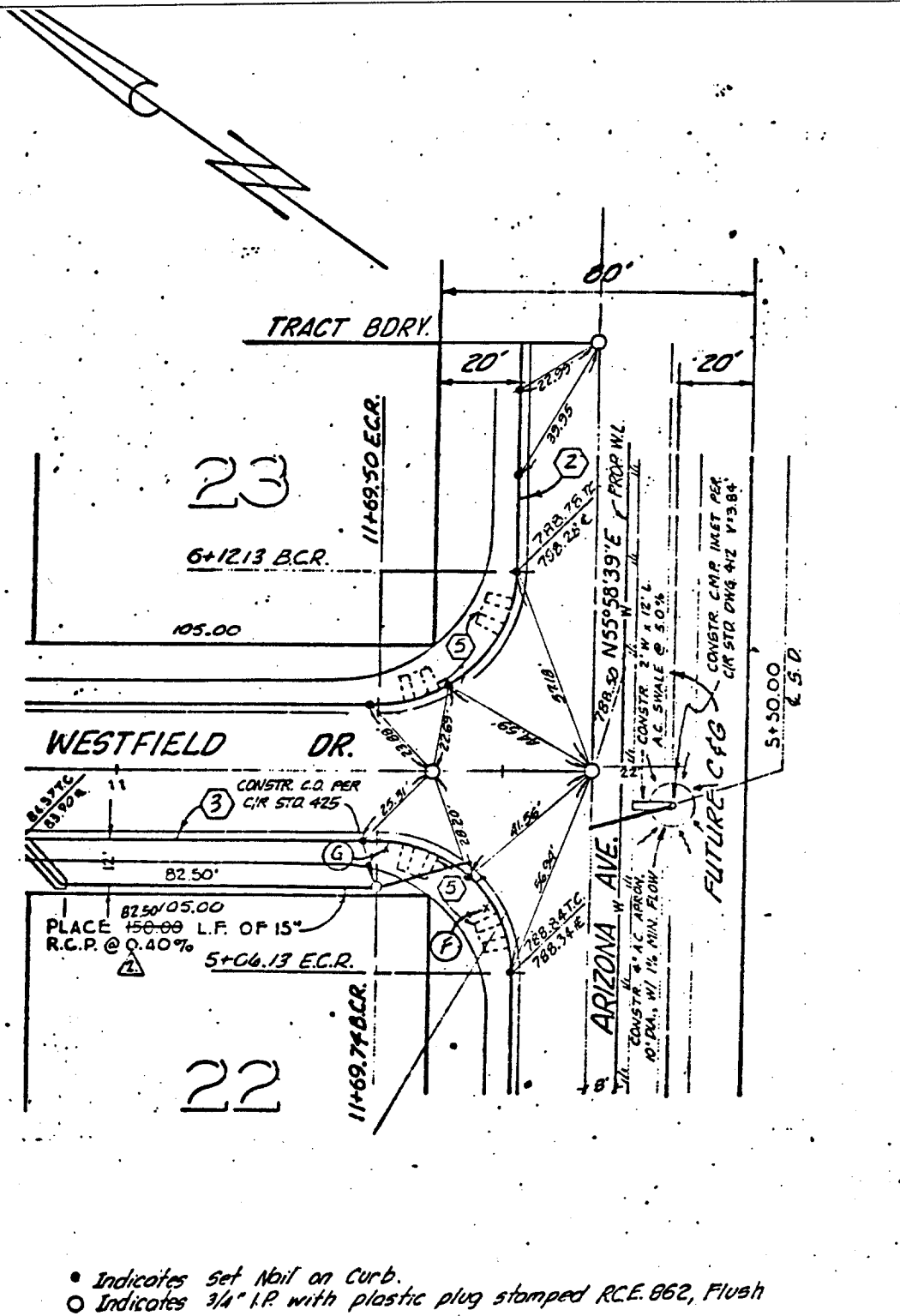


312.71F



• Indicates Set Nail on Curb.
 ○ Indicates 3/4" I.P. with plastic plug stamped R.C.E. 862, Flush

- ✕ FD. Ramset Nail on T/C
- FD. "C" Nail on T/C
- FD. LD. & TK. on T/C
- Set LD. & TK. on T/C

Street: ARIZONA AVE

OFFICIAL USE ONLY

X-Street: WESTFIELD DR.

Scale:
 Date:
 Drawn by:
 W.O.:
 F.B.:

OFFICIAL TIE PLAT

CITY OF RIVERSIDE

These ties are for the purpose of perpetuating the found monumentation. No claim is made as to the relationship of the points or lines shown hereon to true boundary locations.

TRACT No, 8898-2

Sheet 5 of 6

File No.: