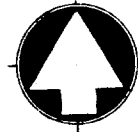


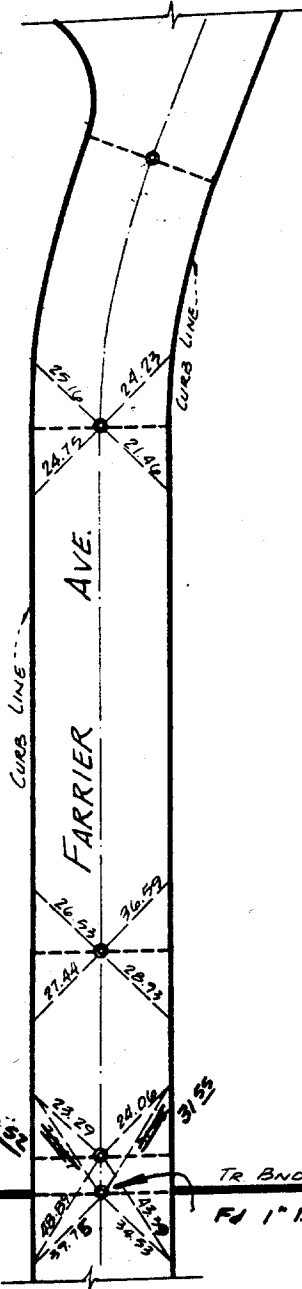
3142. TIF

Street: **FARRIER AVE**

X-Street: _____
OFFICIAL USE ONLY



SCALE: 1" = 40'



CHECKED TIES
6-24-77 CR

NOTE

ALL TIES TO LEAD & TACK
IN CURB UNLESS SHOWN
OTHERWISE

LEGEND

⊙ INDICATES 1" I.P. SET FLUSH,
TAGGED L.S. 3712.

CENTERLINE TIES

TRACT 5104-5

MAXWELL, BROWN & MULLINS
PLANNING · ENGINEERING · SURVEYING
1771 No. D St., San Bernardino, California 92405

SCALE: 1" = 40'

JOB NO. 75-B-3

DATE: 2/23/77

DWG. NO. 25.3

- ✕ FD. Ramset Nail on T/C
- FD. "C" Nail on T/C

- FD. LD. & TK. on T/C
- Set LD. & TK. on T/C

Scale:

Date:

Drawn by:

W.O.:

F.B.:

OFFICIAL TIE PLAT

CITY OF RIVERSIDE

These ties are for the purpose of perpetuating the found
monumentation. No claim is made as to the relationship of
the points or lines shown hereon to true boundary locations.

Sheet 1 of 1

File No.: