

3362.TIF

F.B.:
W.O.:
Drawn by: bmark
Date: 09/03/98
Scale: 1" = 20'

OFFICIAL TIE PLAT

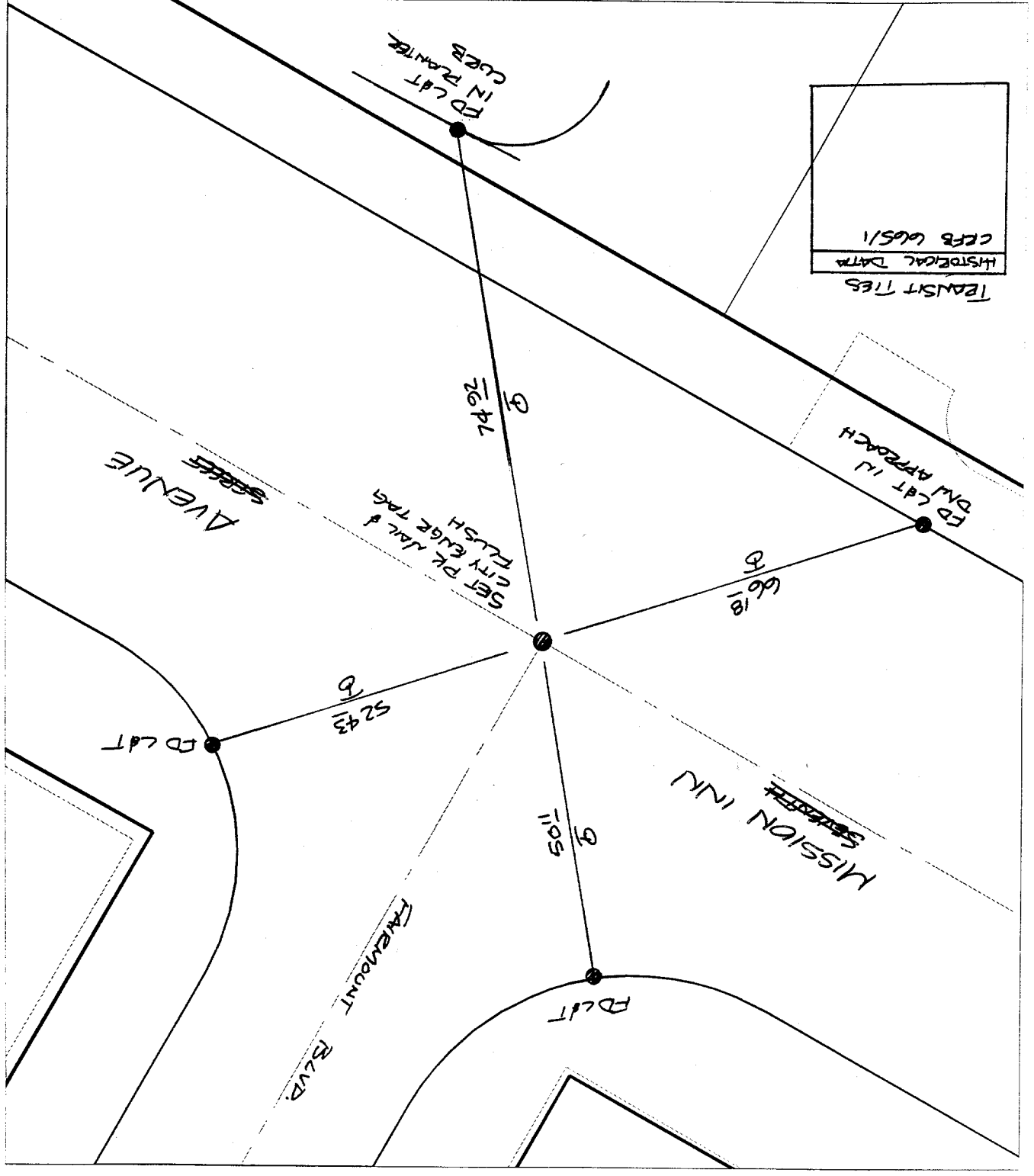
CITY OF RIVERSIDE

These ties are for the purpose of perpetuating the found
monumentation. No claim is made as to the relationship of
the points or lines shown hereon to true boundary locations.

File No.:
Sheet 1 of 1



- × FD. Ramset Nail on T/C
- FD. "C" Nail on T/C
- FD. LD. & TK. on T/C
- Set LD. & TK. on T/C



Street: **SEVENTH** *
MISSION INN AVENUE
X-Street: OFFICIAL USE ONLY
FAIRMOUNT

