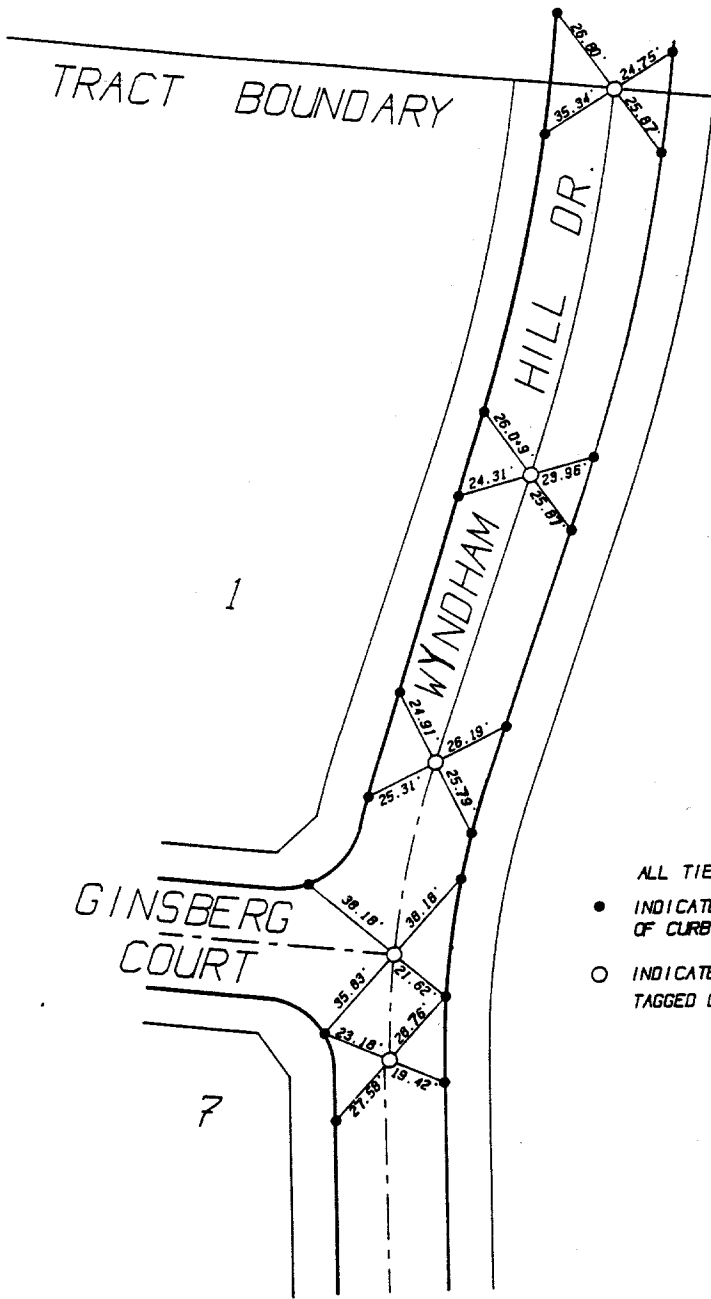


Street: Ginsberg Ct.

OFFICIAL USE ONLY

X-Street: Wyndham Hill Dr.



- ALL TIES ARE TRANSIT TIES
- INDICATES SET NAIL IN TOP OF CURB
  - INDICATES SET 1" I.P. TAGGED L.S. 3547 FLUSH

PLAT PREPARED BY:  
**INTEGRA ENGINEERING, INC.**  
 LAND SURVEYORS \* CIVIL ENGINEERS  
 621 E. CARNEGIE DRIVE, #120, SAN BERNARDINO, CA. 92408  
 TELEPHONE (714) 383-0200 FAX (714) 383-0203

**CITY OF RIVERSIDE**  
 MONUMENTATION TIE SHEET  
**TRACT No. 21188**  
 RECORDED IN M.B. 229/60-63

- ✕ FD. Ramset Nail on T/C
- FD. "C" Nail on T/C

- FD. LD. & TK. on T/C
- Set LD. & TK. on T/C

Scale: \_\_\_\_\_  
 Date: \_\_\_\_\_  
 Drawn by: \_\_\_\_\_  
 W.O.: \_\_\_\_\_  
 F.B.: \_\_\_\_\_

**OFFICIAL TIE PLAT**  
**CITY OF RIVERSIDE**

*These ties are for the purpose of perpetuating the found monumentation. No claim is made as to the relationship of the points or lines shown hereon to true boundary locations.*

Sheet 1 of 1  
 File No.: \_\_\_\_\_