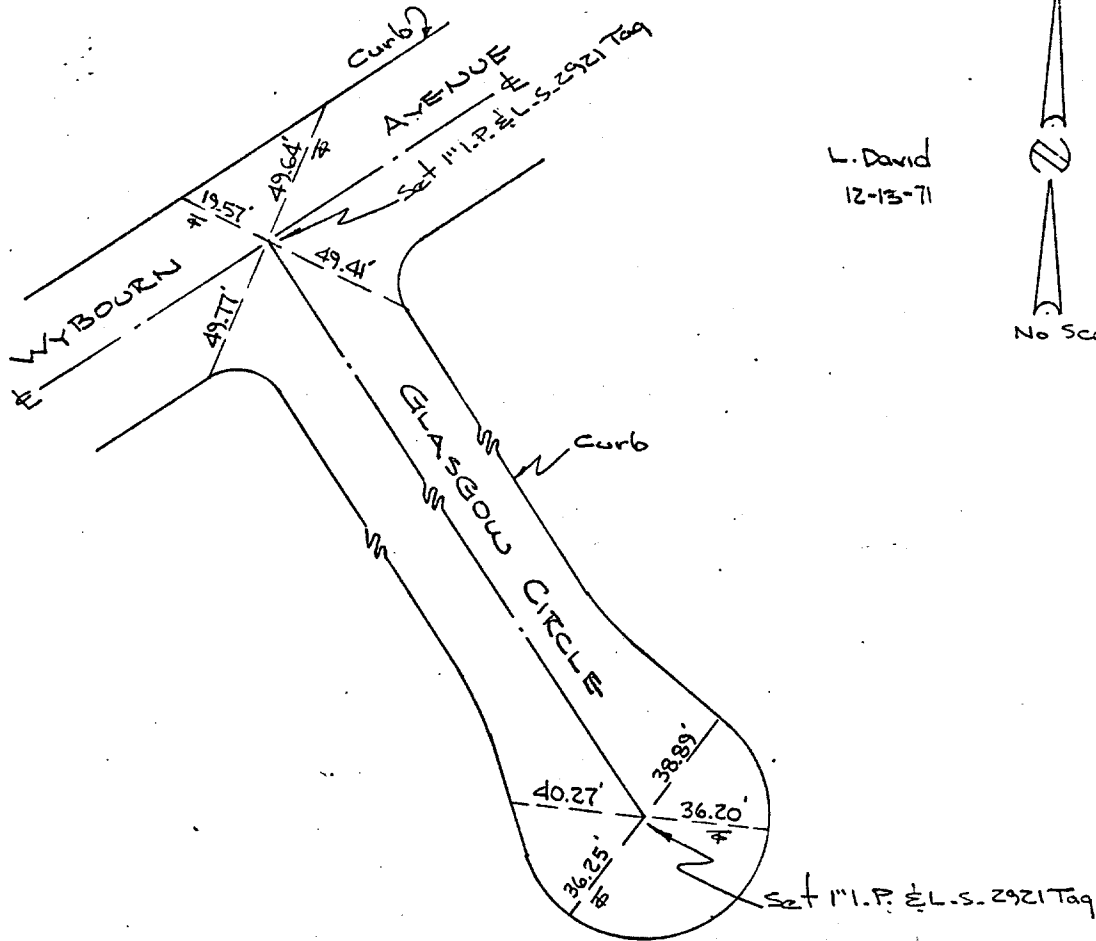


3434.TIF

ETIES
CITY OF RIVERSIDE
TRACT 3651

V.T.N.
Frank W. Richardson L.S. 2921



L. David
12-13-71



Note:
All ties are lead & tack set
in top of curb.

- ✕ FD. Ramset Nail on T/C
- FD. "C" Nail on T/C

- FD. LD. & TK. on T/C
- Set LD. & TK. on T/C

Scale:

Date:

Drawn by:

W.O.:

F.B.:

OFFICIAL TIE PLAT
CITY OF RIVERSIDE

*These ties are for the purpose of perpetuating the found
monumentation. No claim is made as to the relationship of
the points or lines shown hereon to true boundary locations.*

Sheet 1 of 1

File No.:

Street: Glasgow Circle

X-Street: Cul de Sac
OFFICIAL USE ONLY